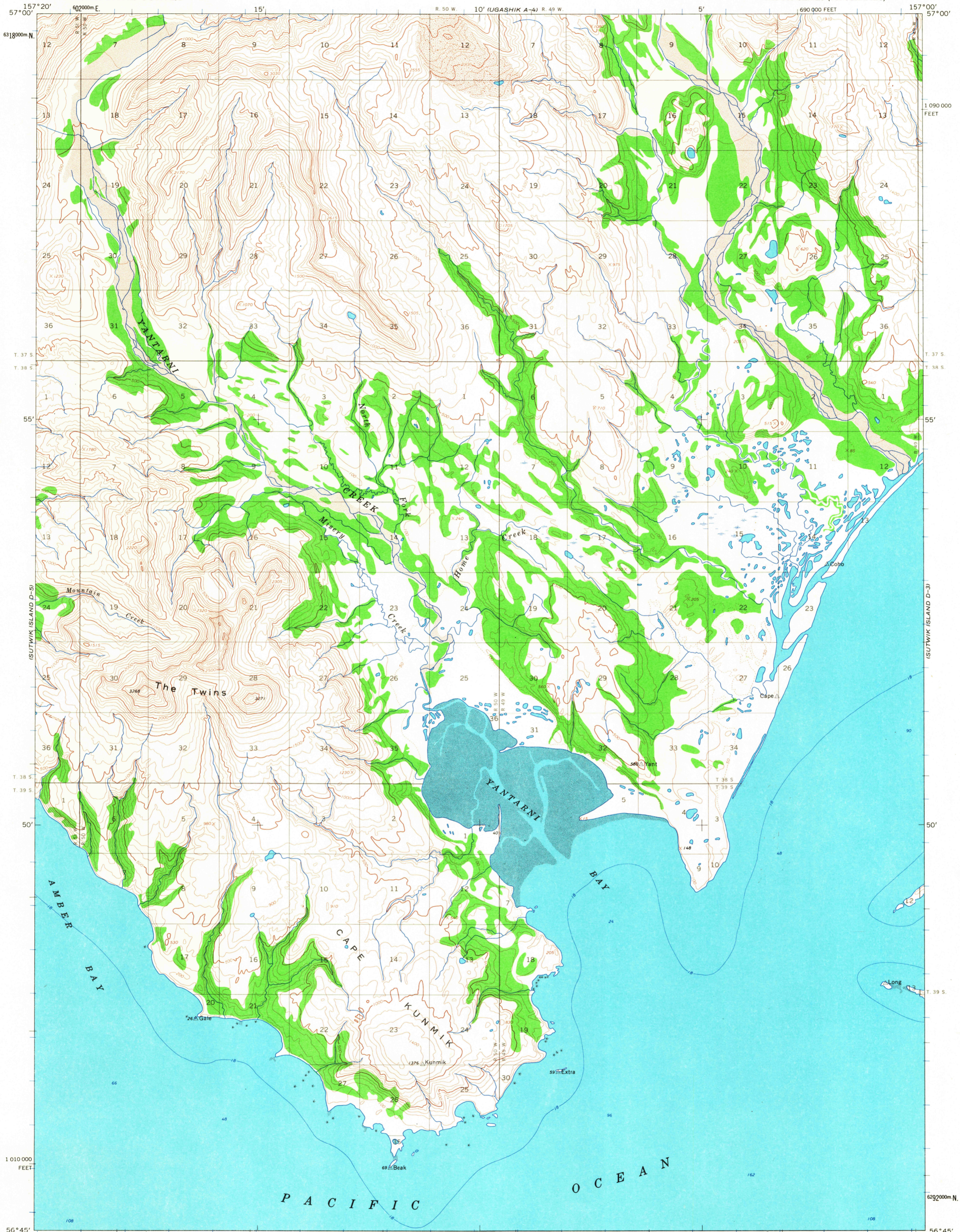
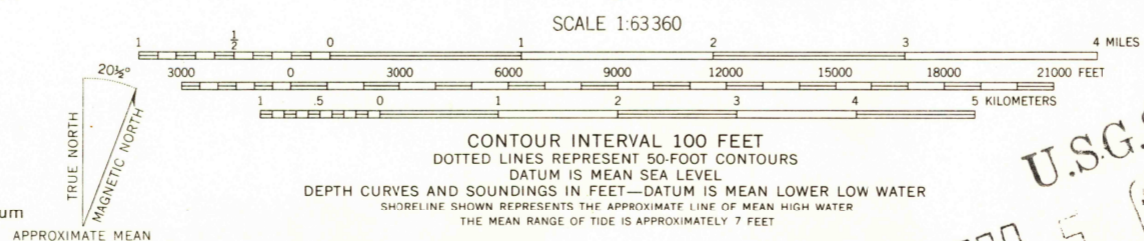


UNITED STATES
DEPARTMENT OF THE INTERIOR
GEOLOGICAL SURVEY

SUTWIK ISLAND (D-4) QUADRANGLE
ALASKA
1:63 360 SERIES (TOPOGRAPHIC)

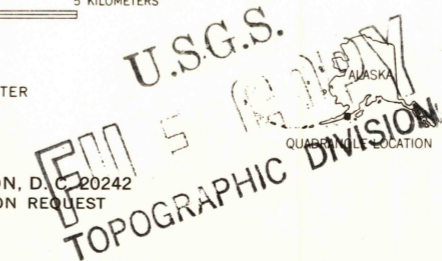


Mapped, edited, and published by the Geological Survey
Control by USGS and USC&GS
Topography by photogrammetric methods from aerial photographs
taken 1957, field annotated 1963. Map not field checked
Selected hydrographic data compiled from USC&GS
Charts 8802 (1965) and 8868 (1965). This information is
not intended for navigational purposes
Universal Transverse Mercator projection. 1927 North American datum
10,000-foot grid based on Alaska coordinate system, zone 6
1000-meter Universal Transverse Mercator grid ticks,
zone 4, shown in blue
Land lines represent unsurveyed and unmarked locations
determined by the Bureau of Land Management
Folios S-25 and S-26, Seward Meridian
Swamps, as portrayed, indicate only the wetter areas,
usually of low relief, as interpreted from aerial photographs



SCALE 1:63360
CONTOUR INTERVAL 100 FEET
DOTTED LINES REPRESENT 50 FOOT CONTOURS
DATUM IS MEAN SEA LEVEL
DEPTH CURVES AND SOUNDINGS IN FEET—DATUM IS MEAN LOWER LOW WATER
SHORELINE SHOWN REPRESENTS THE APPROXIMATE LINE OF MEAN HIGH WATER
THE MEAN RANGE OF TIDE IS APPROXIMATELY 7 FEET

ROAD CLASSIFICATION
No roads or trails in this area



SUTWIK ISLAND (D-4), ALASKA
N5645—W15700/15X20

USGS
Historical File
Topographic Division

3345
MAR 19 1968

1963

FOR SALE BY U. S. GEOLOGICAL SURVEY
FAIRBANKS, ALASKA 99701, DENVER, COLORADO 80225, OR WASHINGTON, D. C. 20242
A FOLDER DESCRIBING TOPOGRAPHIC MAPS AND SYMBOLS IS AVAILABLE ON REQUEST