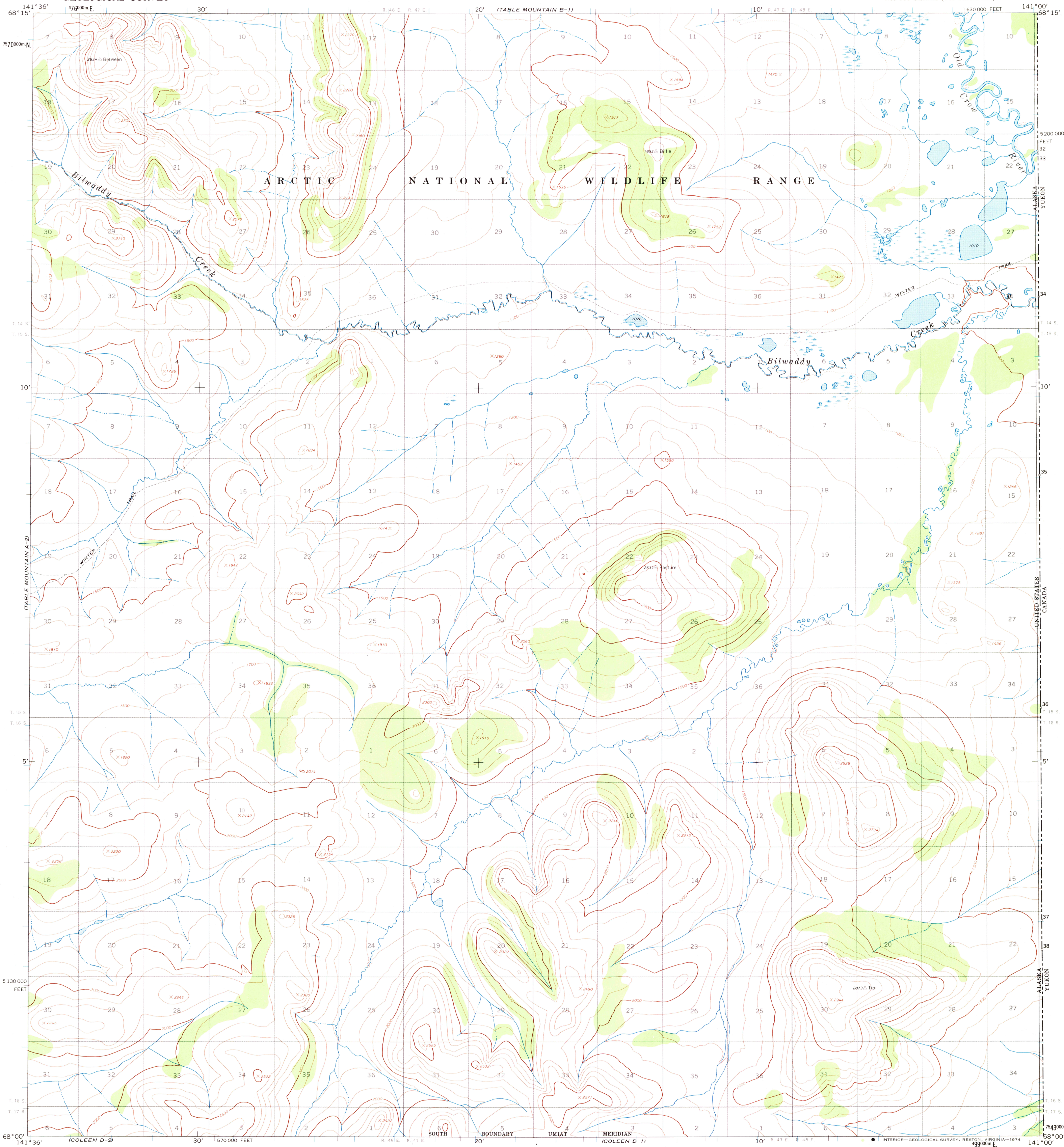


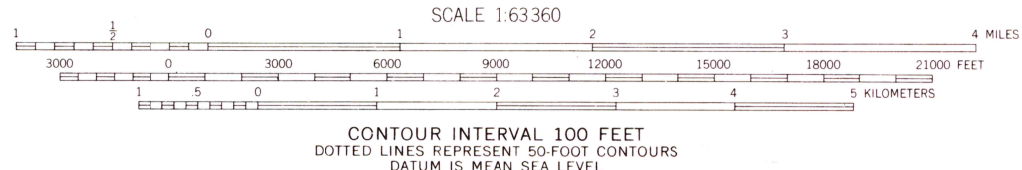
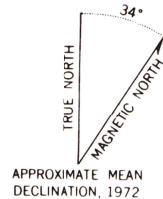
UNITED STATES
DEPARTMENT OF THE INTERIOR
GEOLOGICAL SURVEY

TABLE MOUNTAIN (A-1) QUADRANGLE
ALASKA

1:63 360 SERIES (TOPOGRAPHIC)



Mapped, edited, and published by the Geological Survey
Control by USGS and USC&GS and International Boundary Commission
Topography by photogrammetric methods from aerial photographs
taken 1972, field annotated 1972. Map not field checked
Projection and 1000-meter grid ticks: Universal
Transverse Mercator, zone 7
10,000-foot grid ticks based on Alaska coordinate
system, zone 2. 1927 North American datum
Land lines represent unsurveyed and unmarked locations
predetermined by the Bureau of Land Management
Folio U-13, Umat Meridian
Swamps as portrayed, indicate only the wetter areas,
usually of low relief, as interpreted from aerial photographs



FOR SALE BY U. S. GEOLOGICAL SURVEY
FAIRBANKS, ALASKA 99701, DENVER, COLORADO 80225, OR RESTON, VIRGINIA 22092
A FOLDER DESCRIBING TOPOGRAPHIC MAPS AND SYMBOLS IS AVAILABLE ON REQUEST



ROAD CLASSIFICATION
Trails

JUN 0 3 1974

TABLE MOUNTAIN (A-1), ALASKA
N6800—W14100/15 X 36

1972

USGS
Historical File
Topographic Division

4070