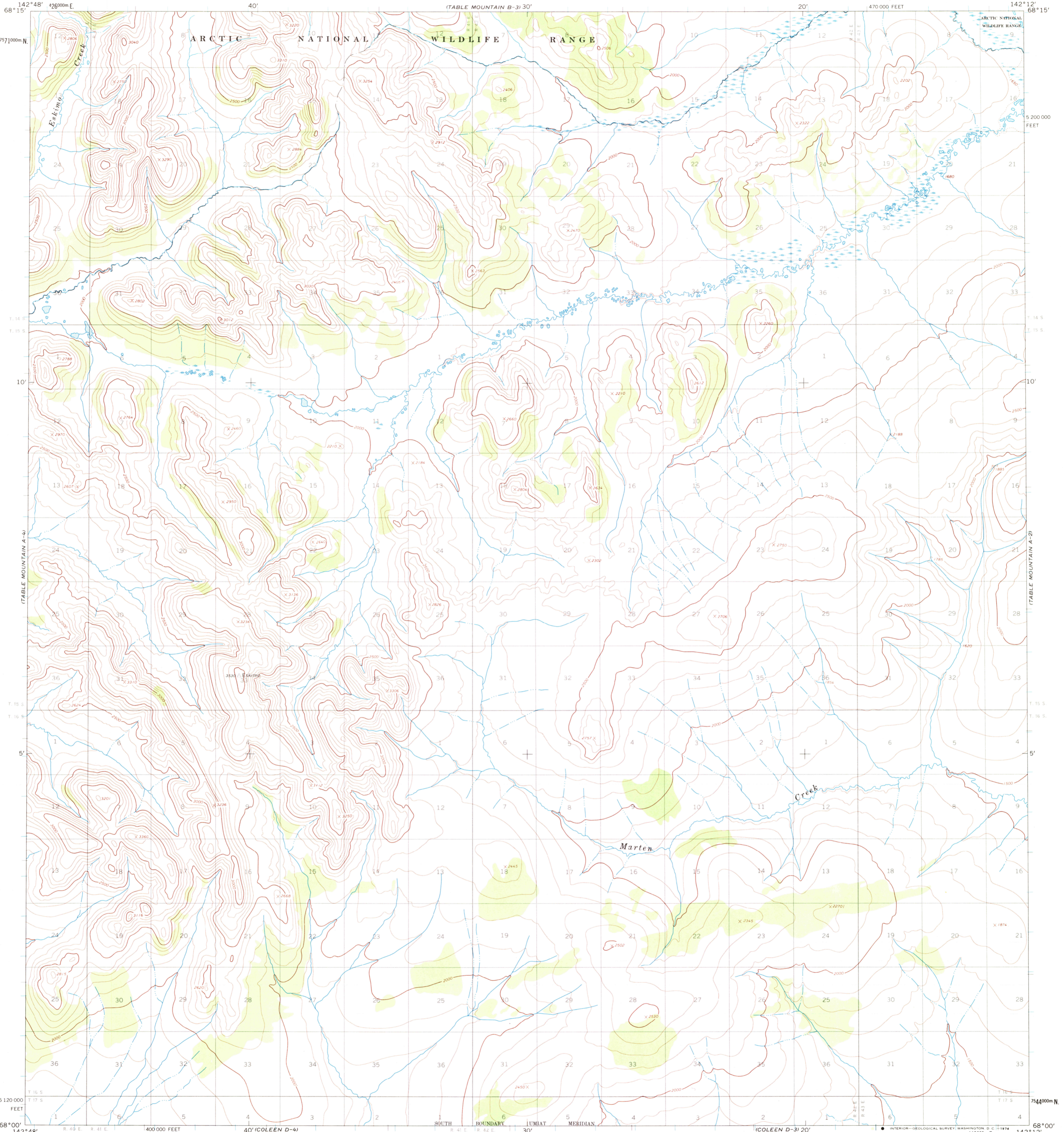


UNITED STATES
DEPARTMENT OF THE INTERIOR
GEOLOGICAL SURVEY

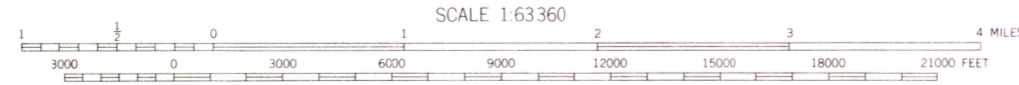
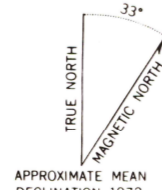
TABLE MOUNTAIN (A-3) QUADRANGLE

ALASKA

1:63 360 SERIES (TOPOGRAPHIC)



Mapped, edited, and published by the Geological Survey
Control by USGS and USC&GS
Topography by photogrammetric methods from aerial photographs
taken 1972, field annotated 1972. Map not field checked
Projection and 1000-meter grid ticks: Universal
Transverse Mercator, zone 2
10,000-foot grid ticks based on Alaska coordinate
system, zone 7, 1927 North American datum
Land lines represent unsurveyed and unmarked locations
predetermined by the Bureau of Land Management
Folio U-13, Umiat Meridian
Swamps as portrayed, indicate only the wetter areas,
usually of low relief, as interpreted from aerial photographs



CONTOUR INTERVAL 100 FEET
DOTTED LINES REPRESENT 50-FOOT CONTOURS
DATUM IS MEAN SEA LEVEL



ROAD CLASSIFICATION
No roads or trails in this area

MAR 22 1974

FOR SALE BY U. S. GEOLOGICAL SURVEY
FAIRBANKS, ALASKA 99701, DENVER, COLORADO 80225, OR WASHINGTON, D. C. 20242
A FOLDER DESCRIBING TOPOGRAPHIC MAPS AND SYMBOLS IS AVAILABLE ON REQUEST

TABLE MOUNTAIN (A-3), ALASKA
N6800-W14212/15 X 36

USGS
Historical File
Topographic Division

1972

3740