

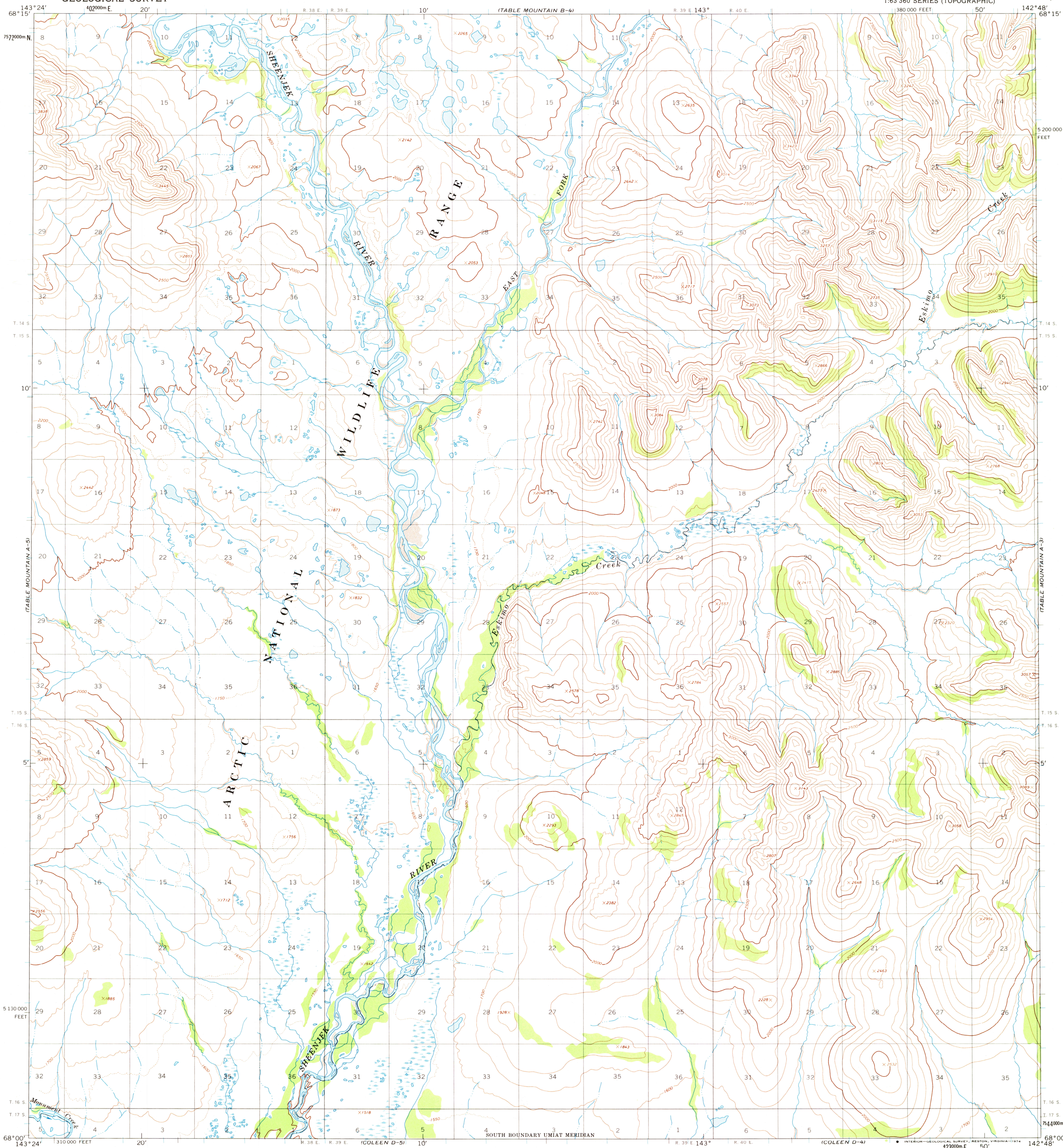
UNITED STATES  
DEPARTMENT OF THE INTERIOR  
GEOLOGICAL SURVEY

TABLE MOUNTAIN (A-4) QUADRANGLE  
ALASKA

1:63 360 SERIES (TOPOGRAPHIC)

380 000 FEET

50'



Mapped, edited, and published by the Geological Survey

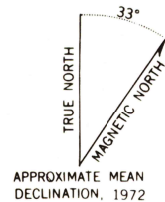
Control by USGS and USC&GS

Topography by photogrammetric methods from aerial photographs taken 1972, field annotated 1972. Map not field checked

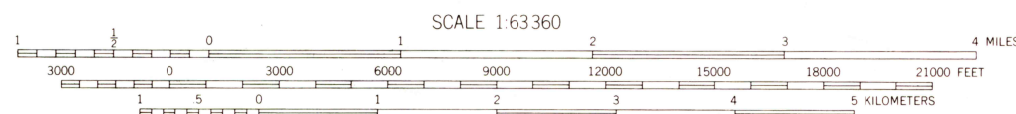
Projection and 1,000-meter grid ticks Universal Transverse Mercator, zone 7  
10,000-foot grid ticks based on Alaska coordinate system, zone 2. 1927 North American datum

Land lines represent unsurveyed and unmarked locations determined by the Bureau of Land Management  
Folio U-13, Umat Meridian

Swamps as portrayed, indicate only the wetter areas, usually of low relief, as interpreted from aerial photographs



APPROXIMATE MEAN  
DECLINATION, 1972



CONTOUR INTERVAL 100 FEET  
DOTTED LINES REPRESENT 50-FOOT CONTOURS  
DATUM IS MEAN SEA LEVEL

FOR SALE BY U.S. GEOLOGICAL SURVEY  
FAIRBANKS, ALASKA 99701, DENVER, COLORADO 80225, OR RESTON, VIRGINIA 22092  
A FOLDER DESCRIBING TOPOGRAPHIC MAPS AND SYMBOLS IS AVAILABLE ON REQUEST



QUADRANGLE LOCATION

TABLE MOUNTAIN (A-4), ALASKA  
N6800—W14248/15 X 36

1972

ROAD CLASSIFICATION  
No roads or trails in this area

USGS  
Historical File  
Topographic Division

NOV 22 1974