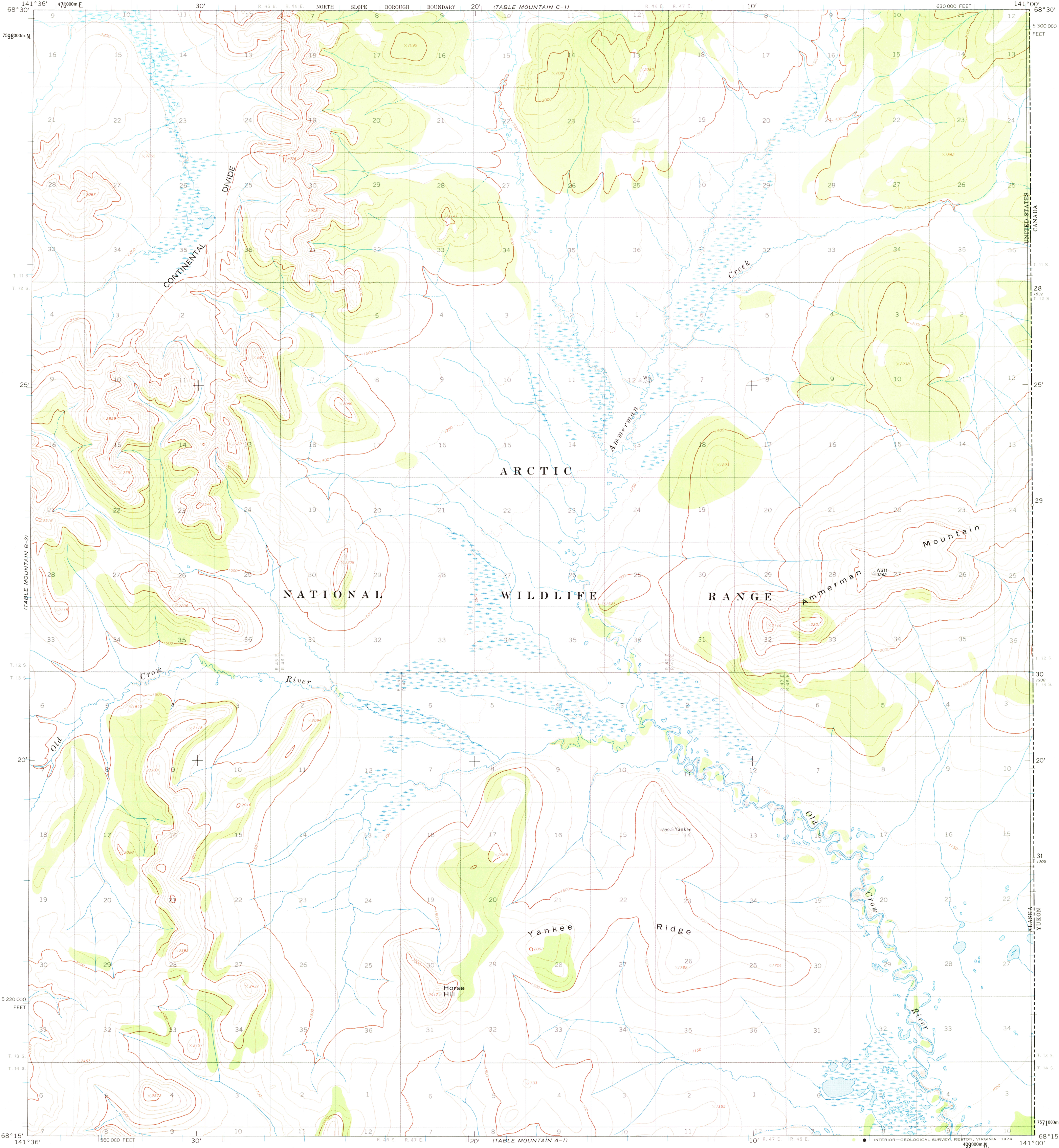


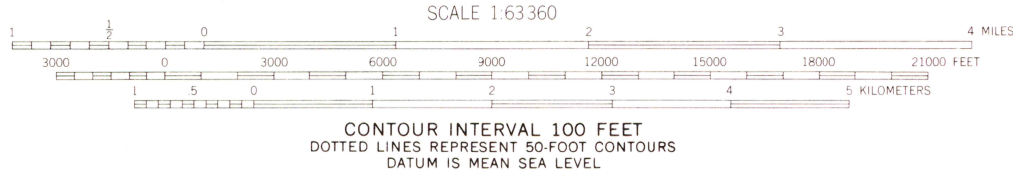
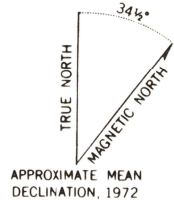
TABLE MOUNTAIN A-2)
TABLE MOUNTAIN A-2)
TABLE MOUNTAIN A-2)

UNITED STATES
DEPARTMENT OF THE INTERIOR
GEOLOGICAL SURVEY

TABLE MOUNTAIN (B-1) QUADRANGLE
ALASKA
1:63 360 SERIES (TOPOGRAPHIC)



Mapped, edited, and published by the Geological Survey
Control by USGS, USC&GS, and International Boundary Commission
Topography by photogrammetric methods from aerial photographs
taken 1972; field annotated 1972. Map not field checked
Projection and 1,000-meter grid ticks: Universal
Transverse Mercator, zone 7
10,000-foot grid ticks based on Alaska coordinate
system, zone 2. 1927 North American datum
Land lines represent unsurveyed and unmarked locations
determined by the Bureau of Land Management
Folio U-13, Umiat Meridian
Swamps as portrayed, indicate only the wetter areas,
usually of low relief, as interpreted from aerial photographs



FOR SALE BY U.S. GEOLOGICAL SURVEY
FAIRBANKS, ALASKA 99701, DENVER, COLORADO 80225, OR RESTON, VIRGINIA 22092
A FOLDER DESCRIBING TOPOGRAPHIC MAPS AND SYMBOLS IS AVAILABLE ON REQUEST



RETURN TO:
USGS AND HISTORICAL MAP ARCHIVES

TABLE MOUNTAIN (B-1), ALASKA
N6815—W14100/15 X 36
1972

ROAD CLASSIFICATION
No roads or trails in this area

TABLE MOUNTAIN B-1
ISBN # 0607 34386 AK 063
TF
9 780607 343861