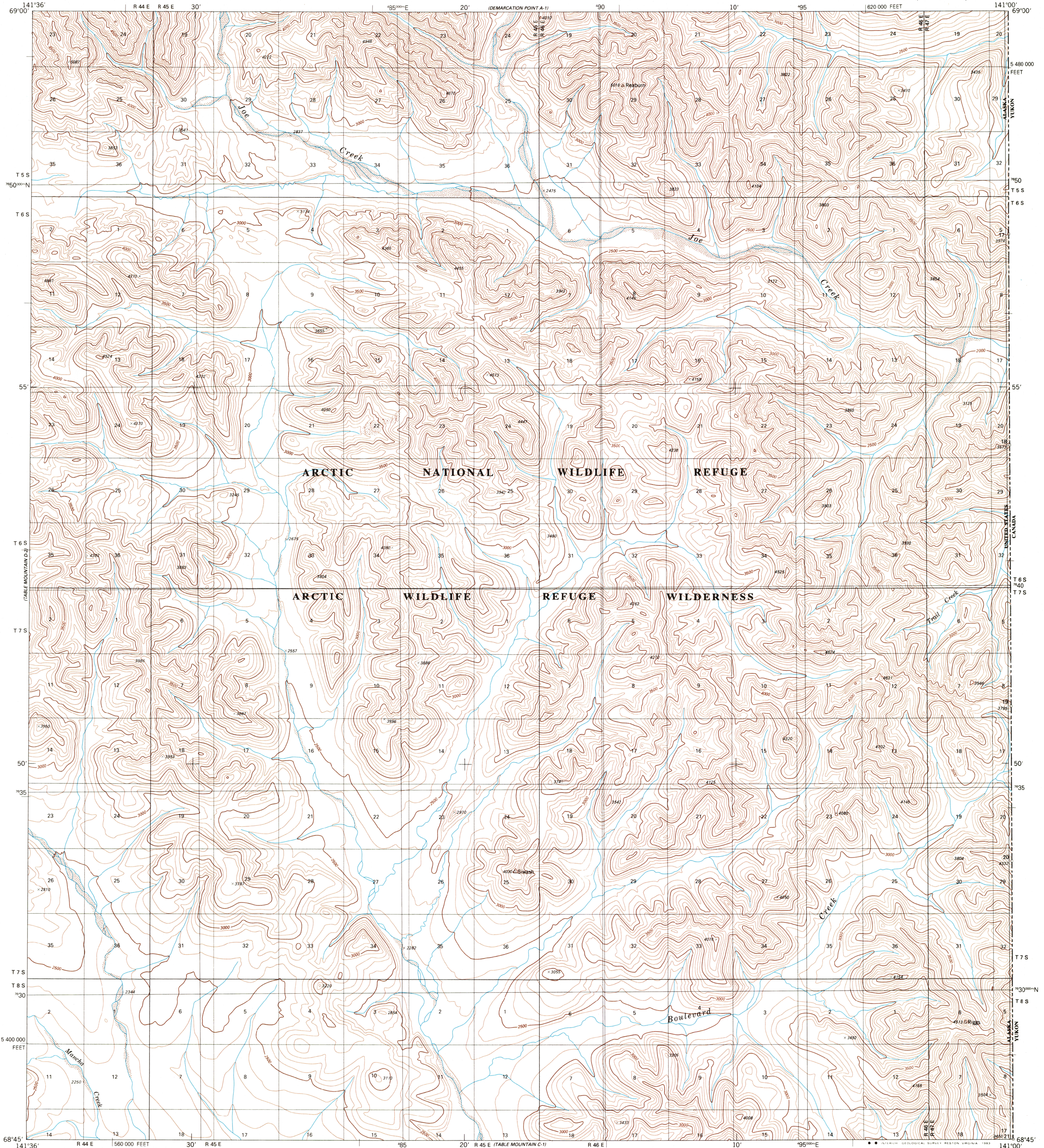
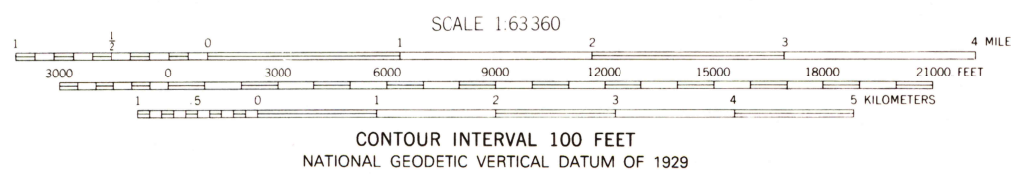
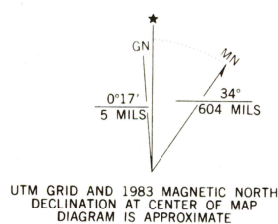


UNITED STATES  
DEPARTMENT OF THE INTERIOR  
GEOLOGICAL SURVEY

TABLE MOUNTAIN (D-1) QUADRANGLE  
ALASKA-NORTH SLOPE BOROUGH  
1:63 360 SERIES (TOPOGRAPHIC)



Mapped, edited, and published by the Geological Survey  
Control by USGS, NOS/NOAA and IBC  
Topography by photogrammetric methods from aerial photographs  
taken 1972 and 1974. Map not field checked. Map edited 1983  
Projection and 5000-meter grid  
Universal Transverse Mercator, zone 7  
20,000-foot grid ticks based on Alaska coordinate  
system, zone 2. 1927 North American Datum  
To place on the predicted North American Datum 1983 move  
the projection lines 24 meters north and 107 meters east  
Land lines represent unsurveyed and unmarked locations  
predetermined by the Bureau of Land Management  
Folio U-13, Umiat Meridian  
There may be private inholdings within the boundaries of  
the National or State reservations shown on this map



ROAD CLASSIFICATION  
No roads or trails in this area

FOR SALE BY U.S. GEOLOGICAL SURVEY  
FAIRBANKS, ALASKA 99701, DENVER, COLORADO 80225, OR RESTON, VIRGINIA 22092  
A FOLDER DESCRIBING TOPOGRAPHIC MAPS AND SYMBOLS IS AVAILABLE ON REQUEST

RETURN TO:  
USGS NMD HISTORICAL MAP ARCHIVES

1983

TABLE MOUNTAIN (D-1), ALASKA  
N6845-W14100/15X36

TABLE MOUNTAIN D-1  
ISBN # 0607038756 AK 063  
TF

