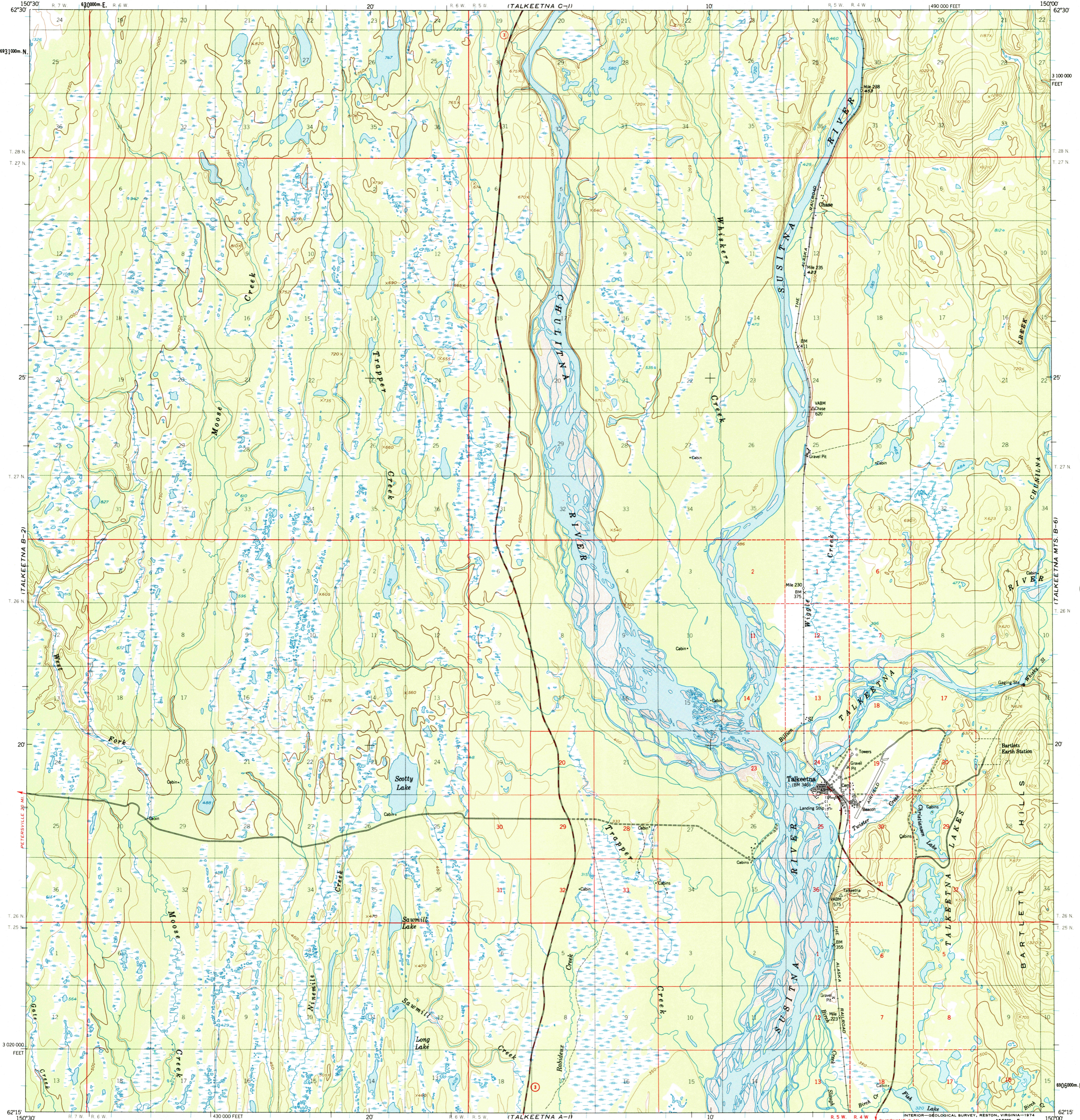


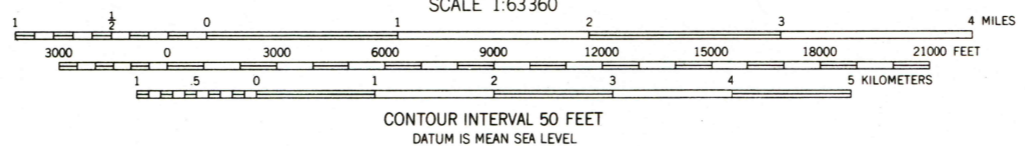
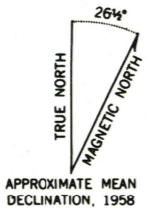


U.S. DEPARTMENT OF THE INTERIOR
U.S. GEOLOGICAL SURVEY

TALKEETNA (B-1) QUADRANGLE
ALASKA—MATANUSKA-SUSITNA BOROUGH
1:63 360 SERIES (TOPOGRAPHIC)



Mapped, edited, and published by the Geological Survey
Control by USGS and USC&GS
Topography by photogrammetric methods from aerial photographs
taken 1951 and 1953, field annotated 1958. Map not field checked
Universal Transverse Mercator projection, 1927 North American datum
10,000-foot grid based on Alaska coordinate system, zone 4
1000-meter Universal Transverse Mercator grid ticks,
zone 5, shown in blue
Gray land lines represent unsurveyed and unmarked locations
predetermined by the Bureau of Land Management
Folio S-2, Seward Meridian
Swamps, as portrayed indicate only the wetter areas,
usually of low relief, as interpreted from aerial photographs



ROAD CLASSIFICATION

Medium-duty	Light-duty
Unimproved dirt	State Route



FOR SALE BY U.S. GEOLOGICAL SURVEY, P.O. BOX 25286, DENVER, COLORADO 80225
A FOLDER DESCRIBING TOPOGRAPHIC MAPS AND SYMBOLS IS AVAILABLE ON REQUEST

RECEIVED

FEB 11 2002

U.S. GEOLOGICAL SURVEY
HISTORICAL MAP ARCHIVES

TALKEETNA (B-1), ALASKA
N6215—W15000/15X30
1958
MINOR REVISIONS 1973

