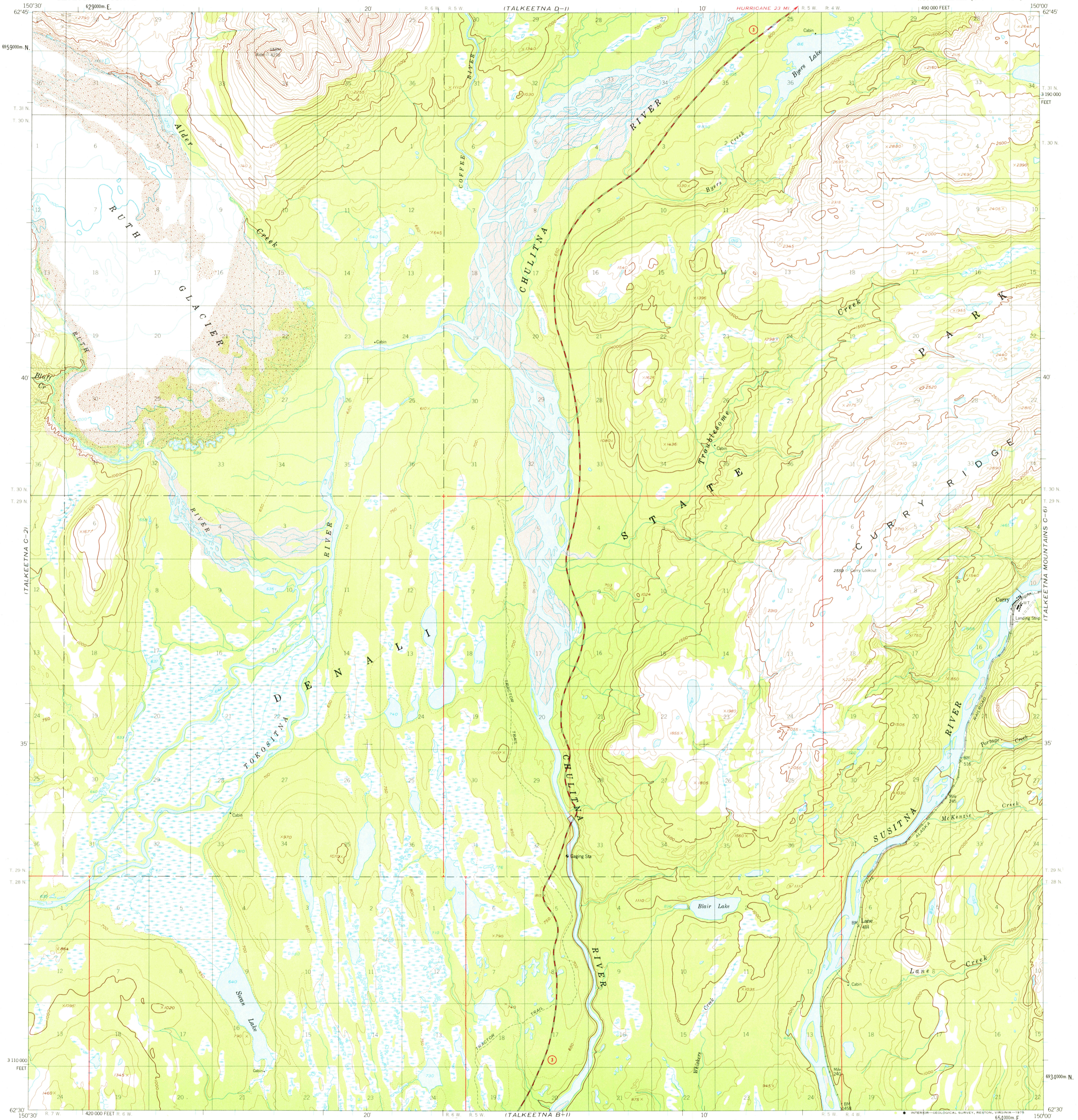


ITALKEETNA D-2

ITALKEETNA MTS. D-6

UNITED STATES
DEPARTMENT OF THE INTERIOR
GEOLOGICAL SURVEY

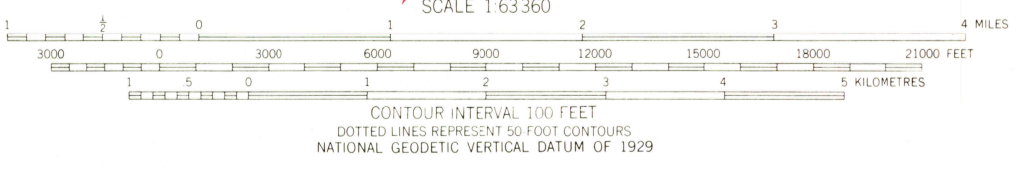
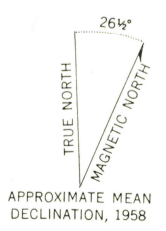
TALKEETNA (C-1) QUADRANGLE
ALASKA - MATANUSKA - SUSITNA BOROUGH
1:63,360 SERIES (TOPOGRAPHIC)



ITALKEETNA B-2

ITALKEETNA MTS. B-6

Mapped, edited, and published by the Geological Survey
Control by USGS and NOS/NOAA
Topography by photogrammetric methods from aerial photographs
taken 1951 and 1953, field annotated 1958. Map not field checked
Universal Transverse Mercator projection, 1927 North American datum
10,000-foot grid based on Alaska coordinate system, zone 4
1000-metre Universal Transverse Mercator grid ticks,
zone 5, shown in blue
Gray land lines represent unsurveyed and
unmarked locations predetermined by the Bureau of
Land Management, Folio S-2, Seward Meridian
Swamps, as portrayed, indicate only the wetter areas,
usually of low relief, as interpreted from aerial photographs



FOR SALE BY U.S. GEOLOGICAL SURVEY
FAIRBANKS, ALASKA 99701, DENVER, COLORADO 80225, OR RESTON, VIRGINIA 22092
A FOLDER DESCRIBING TOPOGRAPHIC MAPS AND SYMBOLS IS AVAILABLE ON REQUEST

ROAD CLASSIFICATION
Medium-duty
State Route

USGS
HISTORICAL FILE
TOPOGRAPHIC DIVISION

TALKEETNA (C-1), ALASKA
N6230 - W15000/15X30
1958
MINOR REVISIONS 1974

JAN 13 1976