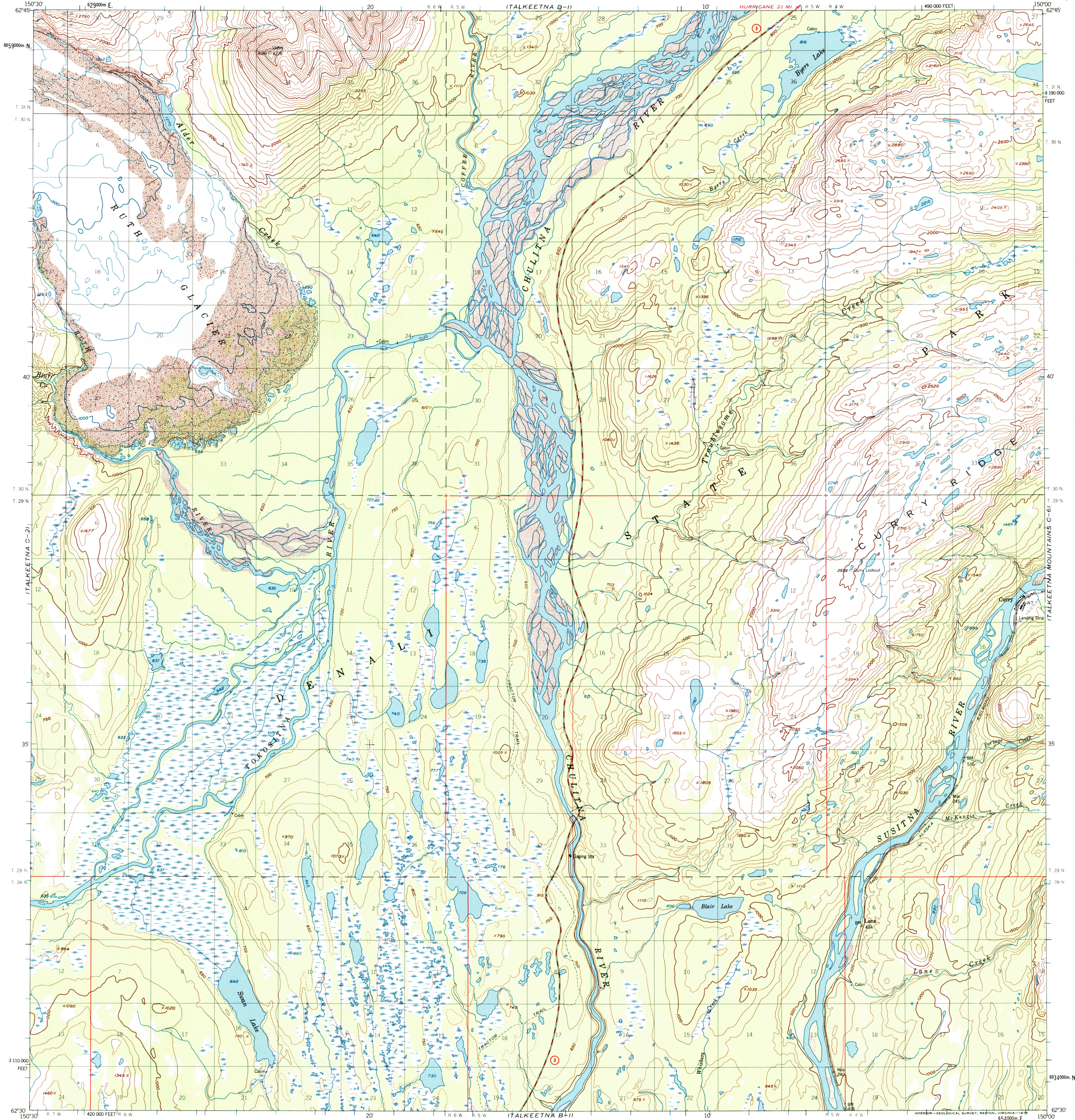


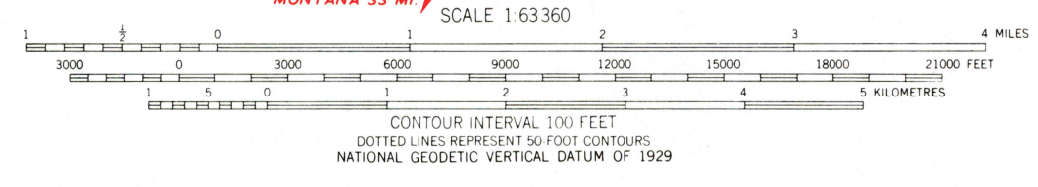
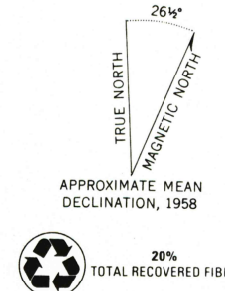


U.S. DEPARTMENT OF THE INTERIOR  
U.S. GEOLOGICAL SURVEY

TALKEETNA (C-1) QUADRANGLE  
ALASKA-MATANUSKA-SUSITNA BOROUGH  
1:63 360 SERIES (TOPOGRAPHIC)



Mapped, edited, and published by the Geological Survey  
Control by USGS and NOS/NOAA  
Topography by photogrammetric methods from aerial photographs  
taken 1951 and 1953, field annotated 1958. Map not field checked  
Universal Transverse Mercator projection: 1927 North American datum  
10,000-foot grid based on Alaska coordinate system, zone 4  
1000-metre Universal Transverse Mercator grid ticks,  
zone 5, shown in blue  
Gray land lines represent unsurveyed and  
unmarked locations predetermined by the Bureau of  
Land Management. Folio S-2, Seward Meridian  
Swamps, as portrayed, indicate only the wetter areas,  
usually of low relief, as interpreted from aerial photographs



FOR SALE BY U.S. GEOLOGICAL SURVEY, P.O. BOX 25286, DENVER, COLORADO 80225  
A FOLDER DESCRIBING TOPOGRAPHIC MAPS AND SYMBOLS IS AVAILABLE ON REQUEST



ROAD CLASSIFICATION  
Medium-duty  
State Route

TALKEETNA (C-1), ALASKA  
N6230-W15000/15X30  
1958  
MINOR REVISIONS 1974

RECEIVED  
APR 30 2001

USGS/NMU  
HISTORICAL MAP ARCHIVES

