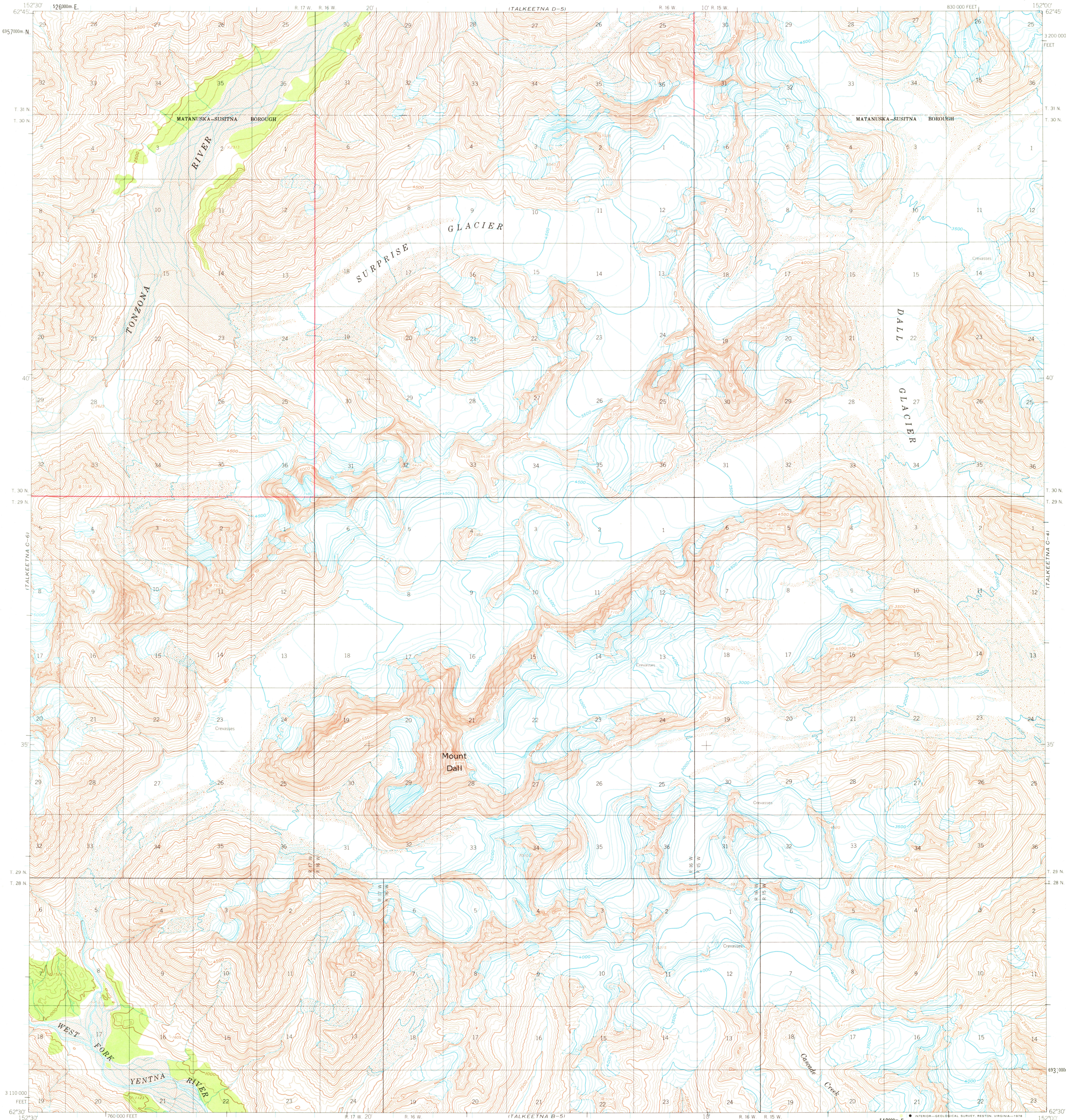


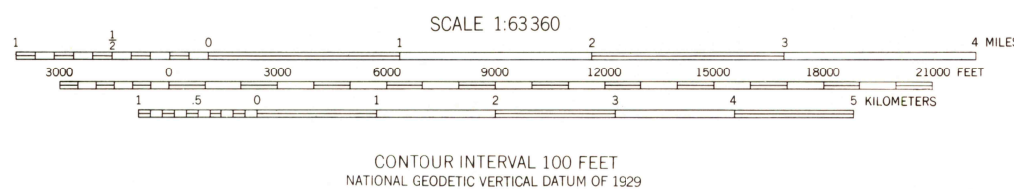
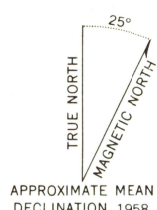
UNITED STATES
DEPARTMENT OF THE INTERIOR
GEOLOGICAL SURVEY

TALKEETNA (C-5) QUADRANGLE
ALASKA
1:63,360 SERIES (TOPOGRAPHIC)



Mapped, edited, and published by the Geological Survey

Control by USGS
Topography by photogrammetric methods from aerial photographs
taken 1952 and 1957, field annotated 1958. Map not field checked
Universal Transverse Mercator projection, 1927 North American datum
10,000-foot grid based on Alaska coordinate system, zone 5
1,000-meter Universal Transverse Mercator grid ticks,
zone 5, shown in blue
Gray land lines represent unsurveyed and unmarked locations
predetermined by the Bureau of Land Management
Folios S-2 and S-3, Seward Meridian



FOR SALE BY U. S. GEOLOGICAL SURVEY
FAIRBANKS, ALASKA 99701, DENVER, COLORADO 80225, OR RESTON, VIRGINIA 22092
A FOLDER DESCRIBING TOPOGRAPHIC MAPS AND SYMBOLS IS AVAILABLE ON REQUEST



ROAD CLASSIFICATION
No roads or trails in this area

FEB 23 1978

TALKEETNA (C-5), ALASKA
N6230-W15200/15X30
1958
LIMITED REVISIONS 1976

USGS
Historical File
Topographic Division

37500
37