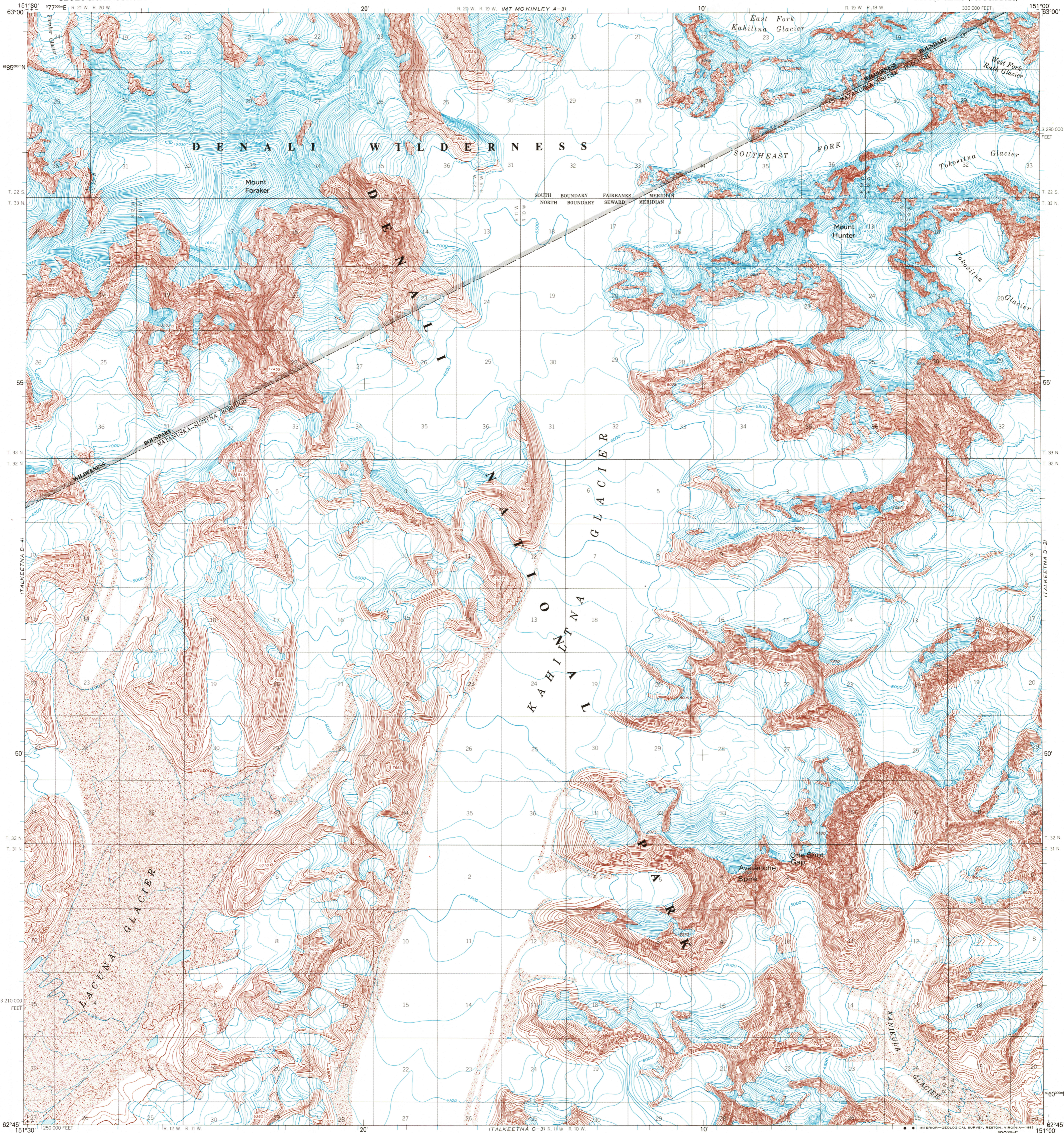


UNITED STATES
DEPARTMENT OF THE INTERIOR
GEOLOGICAL SURVEY

TALKEETNA (D-3) QUADRANGLE
ALASKA

1:63 360 SERIES (TOPOGRAPHIC)



Produced by the United States Geological Survey

Control by USGS and NOS/NOAA

Compiled from aerial photographs taken 1952,
field annotated 1958. Map not field checked

1927 North American Datum (NAD 27). Projection and
10000-foot ticks: Alaska Coordinate System, zone 4 (Transverse Mercator)

Blue 1000-meter Universal Transverse Mercator ticks, zone 5

North American Datum of 1983 (NAD 83) is shown by dashed corner ticks

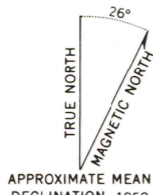
The values of the shift between NAD 27 and NAD 83 for 7.5-minute
intersections are given in USGS Bulletin 1875

There may be private inholdings within the boundaries
of the National or State reservations shown on this map

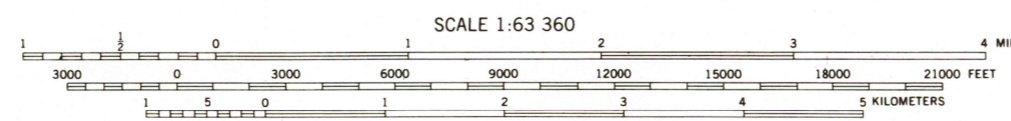
Federal reservation boundaries established by the Alaska National
Interest Lands Conservation Act, PL96-487, Dec. 2, 1980, are
shown as compiled by the administering agencies

Land lines represent unsurveyed and unmarked locations
predetermined by the Bureau of Land Management

Folio S-2, Seward Meridian and Folio F-11, Fairbanks Meridian



APPROXIMATE MEAN
DECLINATION, 1958



CONTOUR INTERVAL 100 FEET
NATIONAL GEODETIC VERTICAL DATUM OF 1929

FOR SALE BY U.S. GEOLOGICAL SURVEY
FAIRBANKS, ALASKA 99701, DENVER, COLORADO 80225, OR RESTON, VIRGINIA 22092
A FOLDER DESCRIBING TOPOGRAPHIC MAPS AND SYMBOLS IS AVAILABLE ON REQUEST



QUADRANGLE LOCATION

ROAD CLASSIFICATION
No roads or trails in this area

TALKEETNA (D-3), ALASKA
62151-G1-TF-063

1958
MINOR REVISION 1973

