

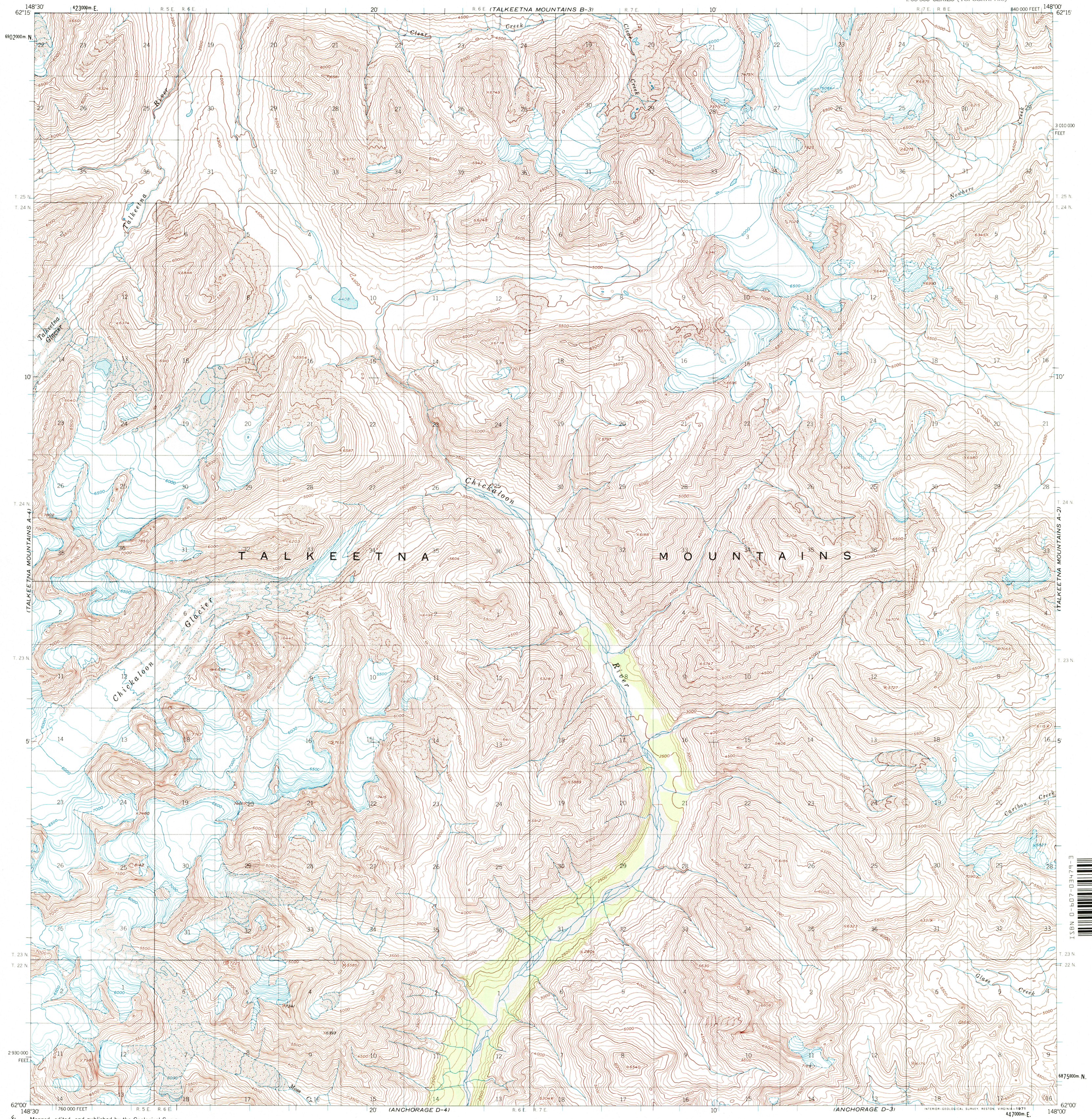
TALKEETNA
MOUNTAINS
B-3



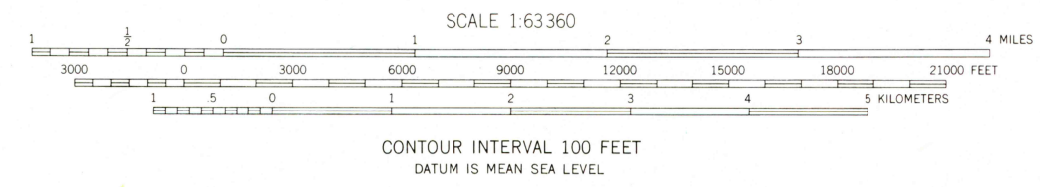
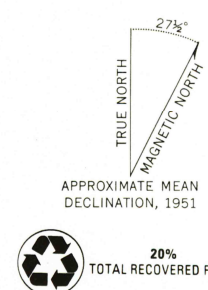
U.S. DEPARTMENT OF THE INTERIOR
U.S. GEOLOGICAL SURVEY

TALKEETNA MOUNTAINS (A-3) QUADRANGLE
ALASKA
1:63 360 SERIES (TOPOGRAPHIC)

TALKEETNA
MOUNTAINS
B-3



Mapped, edited, and published by the Geological Survey
Control by USGS
Topography by photogrammetric methods from aerial photographs
taken 1949, field annotated 1951. Map not field checked
Universal Transverse Mercator projection, 1927 North American datum
10,000-foot grid based on Alaska coordinate system, zone 4
1000-meter Universal Transverse Mercator grid ticks,
zone 6, shown in blue
Land lines represent unsurveyed and unmarked locations
predetermined by the Bureau of Land Management
Folio S-1, Seward Meridian



ROAD CLASSIFICATION
No roads or trails in this area

TALKEETNA MOUNTAINS (A-3), ALASKA
N6200—W14800/15X30

1951
MINOR REVISIONS 1963

FOR SALE BY U.S. GEOLOGICAL SURVEY, P.O. BOX 25286, DENVER, COLORADO 80225
A FOLDER DESCRIBING TOPOGRAPHIC MAPS AND SYMBOLS IS AVAILABLE ON REQUEST

RECEIVED
SEP 30 2000
USGS NMD
HISTORICAL MAP ARCHIVES

