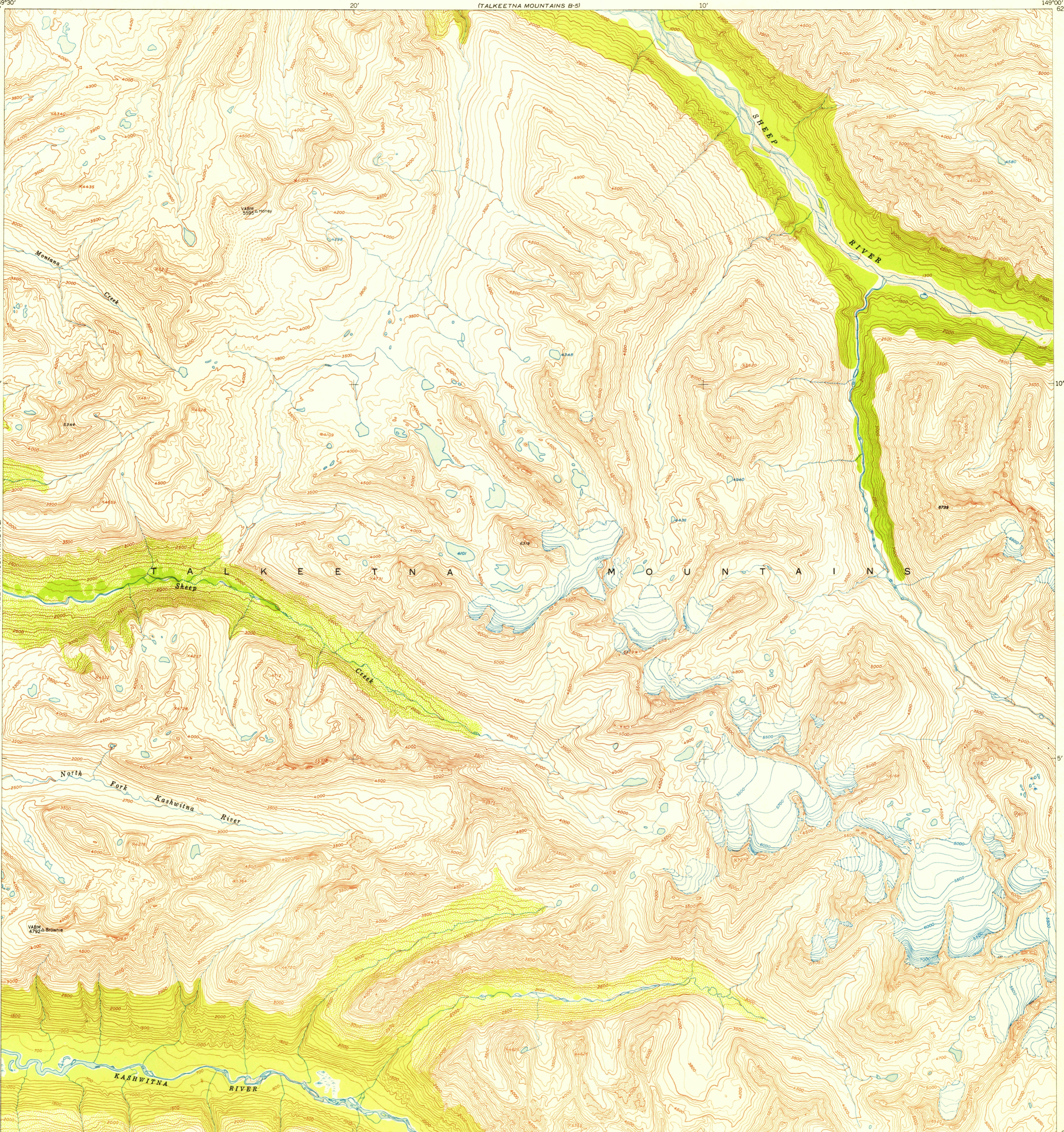


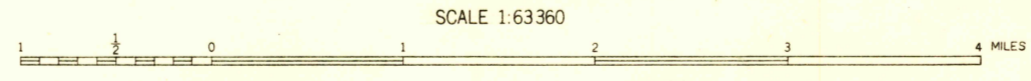
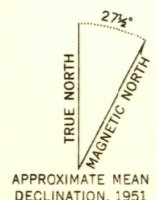
U. S. G. S.  
**FILE COPY**  
Inspection and Editing.

UNITED STATES  
DEPARTMENT OF THE INTERIOR  
GEOLOGICAL SURVEY

TALKEETNA MOUNTAINS (A-5) QUADRANGLE  
ALASKA-THIRD JUDICIAL DIVISION  
1:63 360 SERIES (TOPOGRAPHIC)



Maped, edited, and published by the Geological Survey  
Control by USGS and USC&GS  
Topography from aerial photographs by multiplex methods  
Aerial photographs taken August 1949  
Universal Transverse Mercator projection, zone 6  
1927 North American datum  
Unchecked elevations shown in brown and blue



CONTOUR INTERVAL 100 FEET  
AREAS NOT SURVEYED IN DETAIL INDICATED BY BROKEN LINES  
DATUM IS MEAN SEA LEVEL

USGS  
Historical File  
Topographic Division

ROAD CLASSIFICATION

ALL WEATHER ROADS	DRY WEATHER ROADS
Hard-surface.....None	Improved dirt.....None
Other.....None	Unimproved dirt.....None
Trails.....None	

U. S. G. S.  
**FILE COPY**  
Inspection and Editing.

TALKEETNA MOUNTAINS (A-5), ALASKA  
N6200-W14900/15X30  
EDITION OF 1952

FOR SALE BY U.S. GEOLOGICAL SURVEY, FEDERAL CENTER, DENVER, COLORADO OR WASHINGTON 25, D. C.  
A FOLDER DESCRIBING TOPOGRAPHIC MAPS AND SYMBOLS IS AVAILABLE ON REQUEST

FEB 21 1952

2110