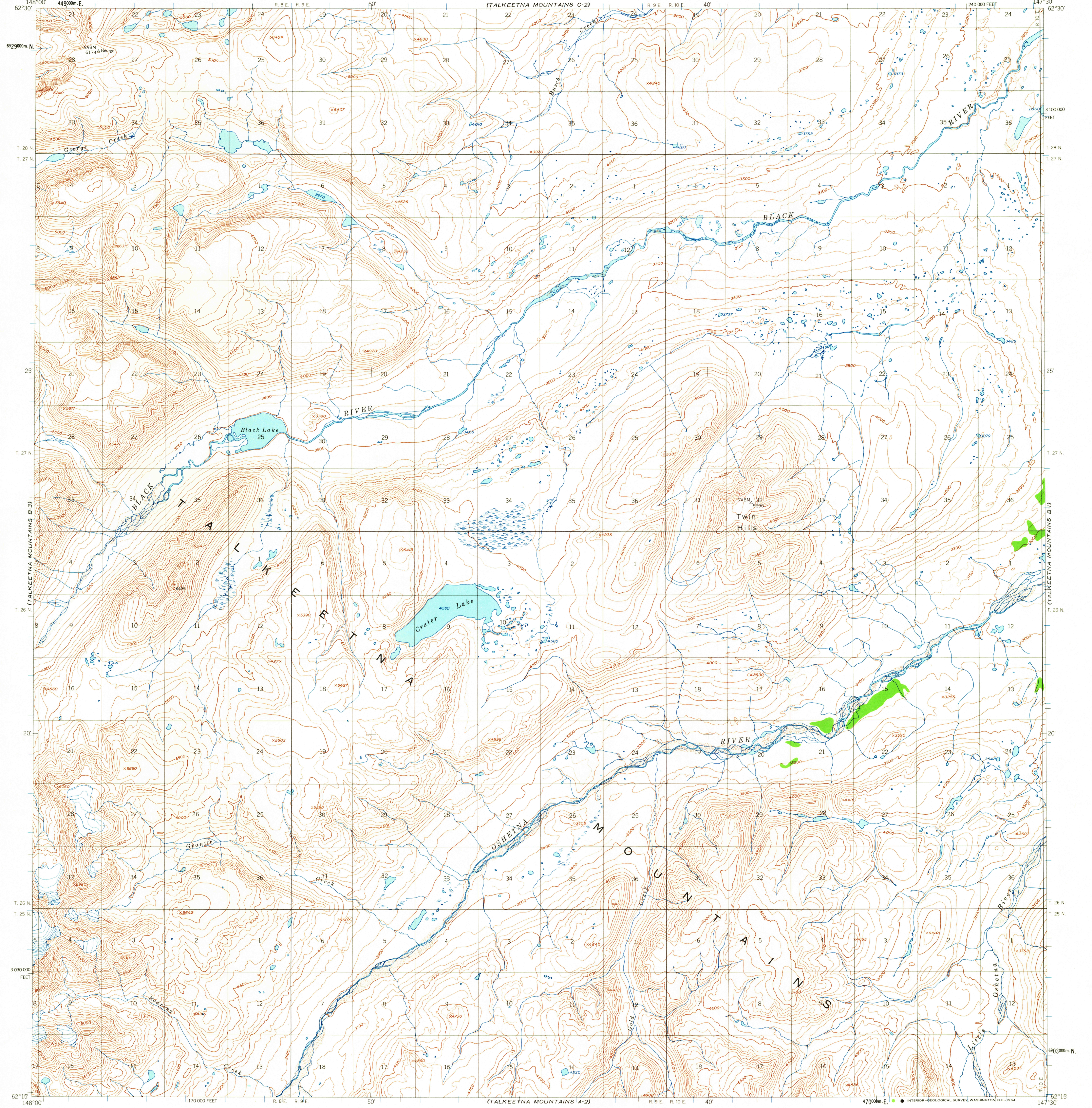


(TALKEETNA MTS C-3)

(TALKEETNA MTS C-1)

UNITED STATES
DEPARTMENT OF THE INTERIOR
GEOLOGICAL SURVEY

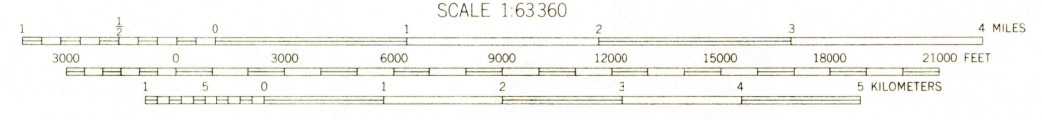
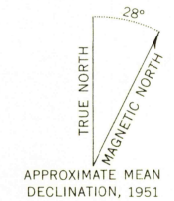
TALKEETNA MOUNTAINS (B-2) QUADRANGLE
ALASKA
1:63 360 SERIES (TOPOGRAPHIC)



(TALKEETNA MTS A-3)

(TALKEETNA MTS A-1)

Mapped, edited, and published by the Geological Survey
Control by USGS
Topography by photogrammetric methods from aerial photographs
taken 1949, field annotated 1951. Map not field checked.
Universal Transverse Mercator projection, 1927 North American datum
10,000-foot grid based on Alaska coordinate system, zone 3
1000-meter Universal Transverse Mercator grid ticks,
zone 6, shown in blue
Land lines represent unsurveyed and unmarked locations
predetermined by the Bureau of Land Management
Folio S-1, Seward Meridian
Swamps, as portrayed, indicate only the wetter areas,
usually of low relief, as interpreted from aerial photographs



CONTOUR INTERVAL 100 FEET
DOTTED LINES REPRESENT 50 FOOT CONTOURS
DATUM IS MEAN SEA LEVEL

FOR SALE BY U. S. GEOLOGICAL SURVEY
FAIRBANKS, ALASKA DENVER 25, COLORADO WASHINGTON 25, D. C.
A FOLDER DESCRIBING TOPOGRAPHIC MAPS AND SYMBOLS IS AVAILABLE ON REQUEST

USGS
Historical File
Topographic Division

ROAD CLASSIFICATION
No roads or trails in this area



U.S.G.S.
TOPOGRAPHIC DIVISION

TALKEETNA MOUNTAINS (B-2), ALASKA
N6215-W14730/15X30
1951
MINOR REVISIONS 1963
JUL 7 1964

1620