

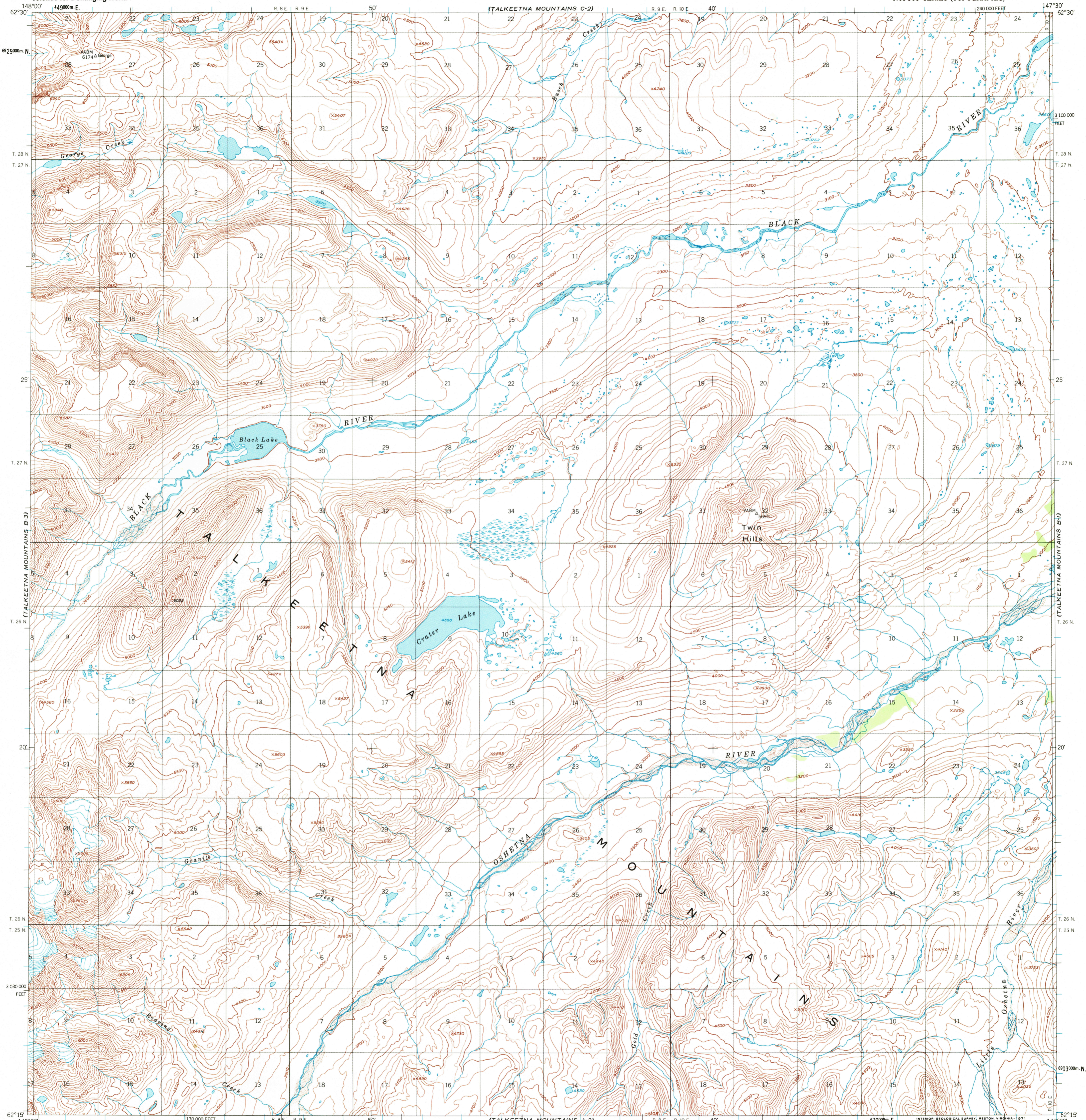
TALKEETNA
MTS. C-2



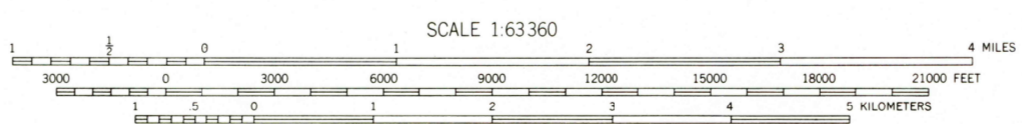
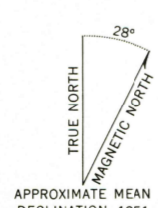
U.S. DEPARTMENT OF THE INTERIOR
U.S. GEOLOGICAL SURVEY

TALKEETNA MOUNTAINS (B-2) QUADRANGLE
ALASKA
1:63 360 SERIES (TOPOGRAPHIC)

TALKEETNA
MTS. C-11



Mapped, edited, and published by the Geological Survey
Control by USGS
Topography by photogrammetric methods from aerial photographs
taken 1949, field annotated 1951. Map not field checked
Universal Transverse Mercator projection, 1927 North American datum
10,000-foot grid based on Alaska coordinate system, zone 3
1000-meter Universal Transverse Mercator grid ticks,
zone 6, shown in blue
Land lines represent unsurveyed and unmarked locations
pre-determined by the Bureau of Land Management
Folio S-1, Seward Meridian
Swamps, as portrayed, indicate only the wetter areas,
usually of low relief, as interpreted from aerial photographs



CONTOUR INTERVAL 100 FEET
DOTTED LINES REPRESENT 50 FOOT CONTOURS
DATUM IS MEAN SEA LEVEL



ROAD CLASSIFICATION
No roads or trails in this area



FOR SALE BY U.S. GEOLOGICAL SURVEY, P.O. BOX 25286, DENVER, COLORADO 80225
A FOLDER DESCRIBING TOPOGRAPHIC MAPS AND SYMBOLS IS AVAILABLE ON REQUEST

RECEIVED
AUG 31 2000

USGS NHD
HISTORICAL MAP ARCHIVES

TALKEETNA MOUNTAINS (B-2), ALASKA
N6215-W14730/15X30
1951
MINOR REVISIONS 1963

TALKEETNA
MTS. A-3

ISBN 0-607-01105-8
9 780607 011067