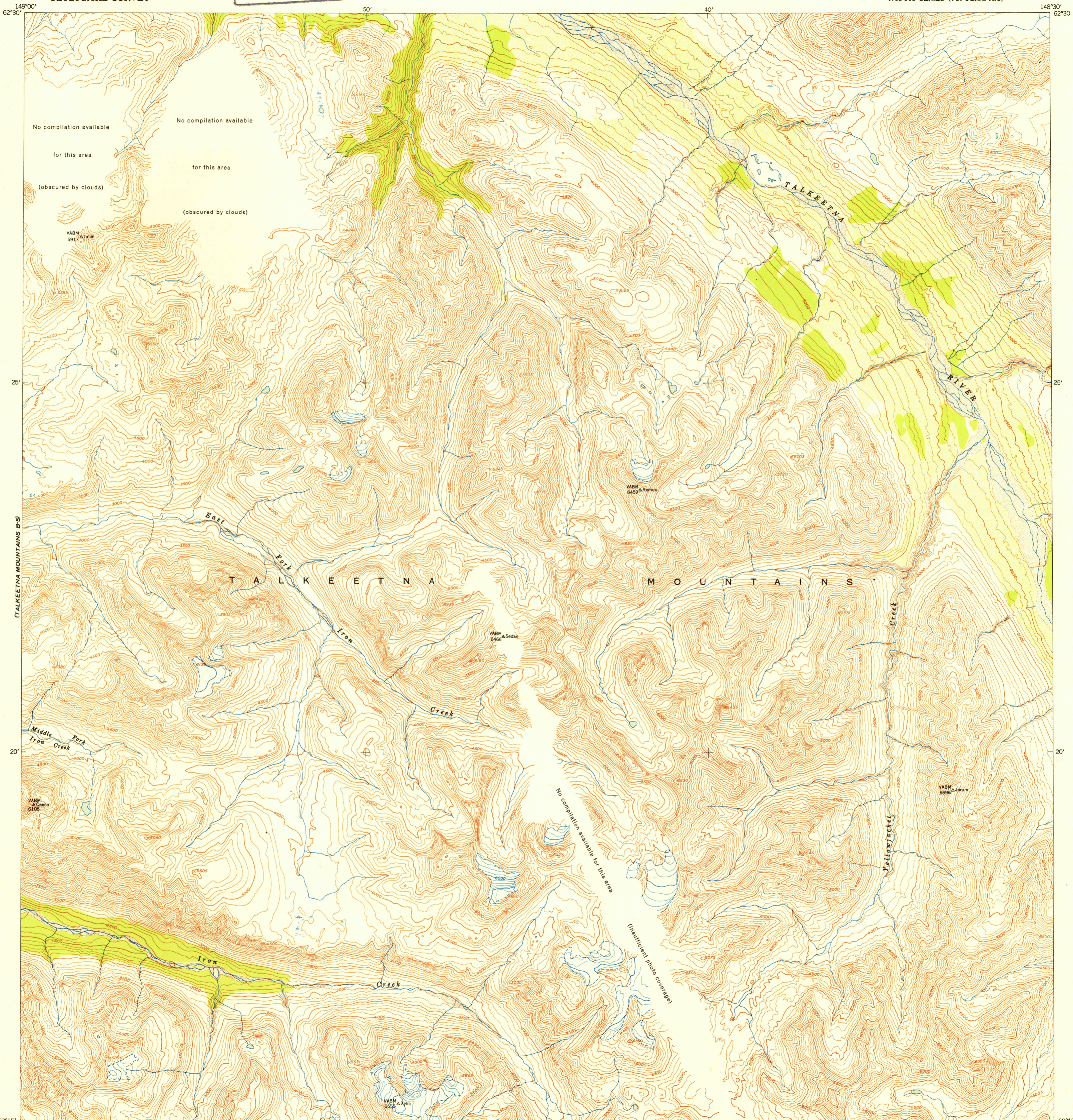


TALKEETNA  
MTS. C-3

UNITED STATES  
DEPARTMENT OF THE INTERIOR  
GEOLOGICAL SURVEY

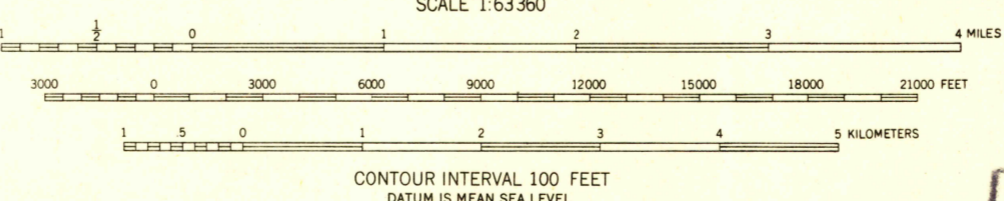
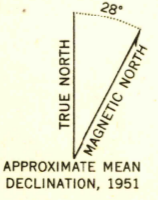
U. S. G. S.  
**FILE COPY**  
Inspection and Editing.

TALKEETNA MOUNTAINS (B-4) QUADRANGLE  
ALASKA-THIRD JUDICIAL DIVISION  
1:63 360 SERIES (TOPOGRAPHIC)



TALKEETNA  
MTS. A-3

Mapped, edited, and published by the Geological Survey  
Control by USGS and USC&GS  
Topography from aerial photographs by multiplex methods  
Aerial photographs taken August 1949  
Universal Transverse Mercator projection, zone 6  
1927 North American datum  
Unchecked elevations shown in brown



**USGS**  
Historical File  
Topographic Division

ROAD CLASSIFICATION

ALL WEATHER ROADS	DRY WEATHER ROADS
Hard surface.....None	Improved dirt.....None
Other.....None	Unimproved dirt.....None
	Trails.....None

FOR SALE BY U. S. GEOLOGICAL SURVEY, FEDERAL CENTER, DENVER, COLORADO OR WASHINGTON 25, D. C.  
A FOLDER DESCRIBING TOPOGRAPHIC MAPS AND SYMBOLS IS AVAILABLE ON REQUEST

U. S. G. S.  
**FILE COPY**  
Inspection and Editing.

TALKEETNA MOUNTAINS (B-4), ALASKA  
N6215-W14830/15X30  
EDITION OF 1952

APR 7 1952 2165