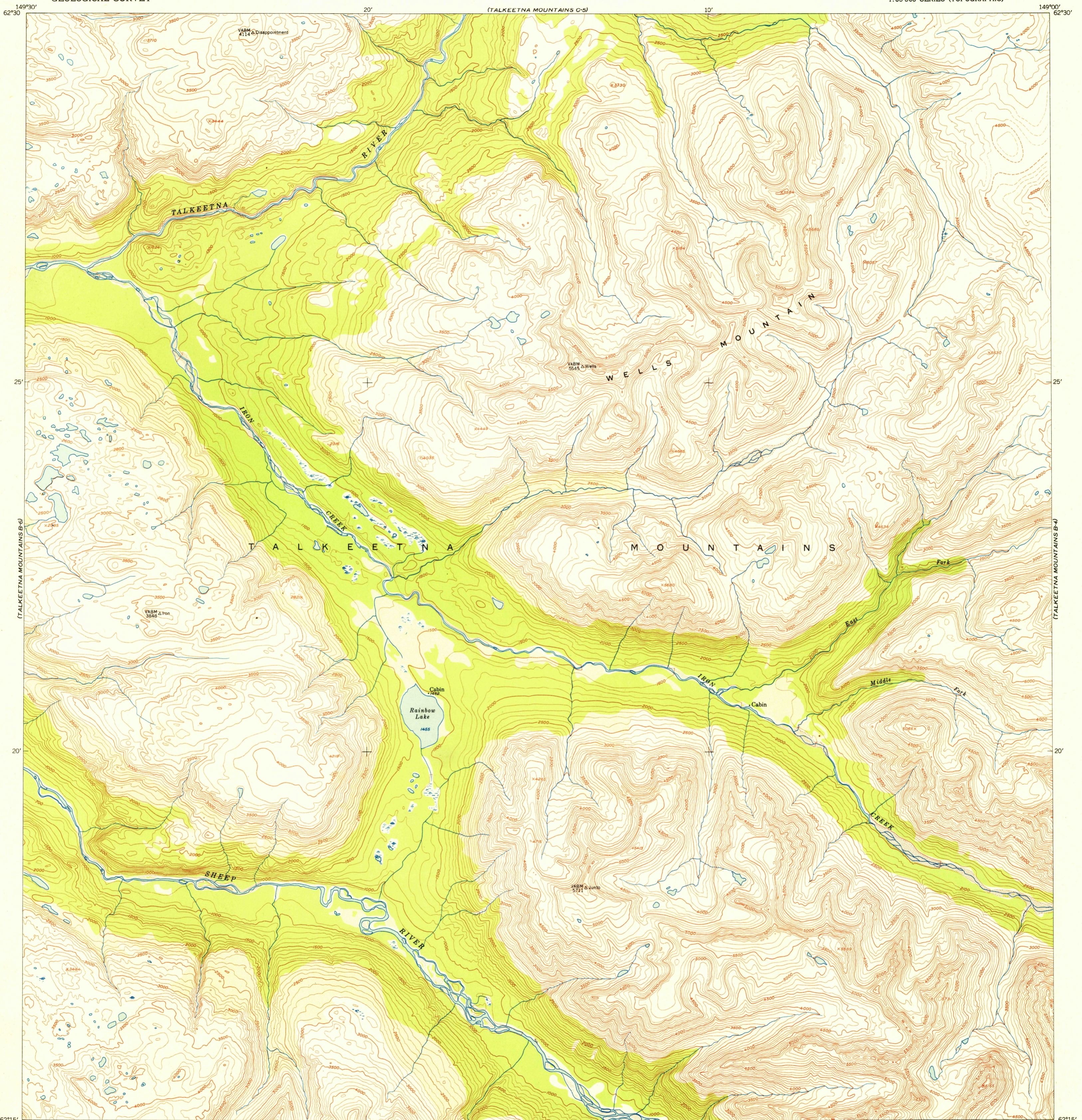


TALKEETNA
M.T.S. C-5

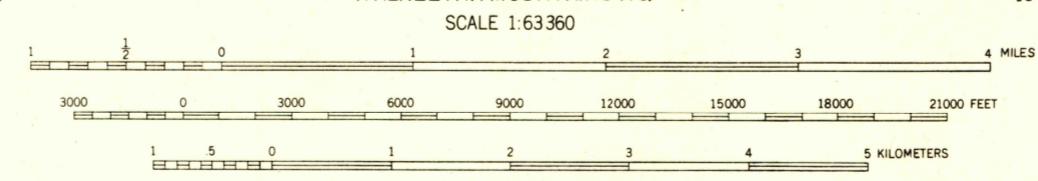
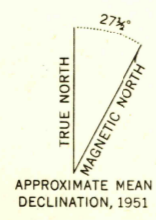
UNITED STATES
DEPARTMENT OF THE INTERIOR
GEOLOGICAL SURVEY

U.S.G.S.
FILE COPY
Inspection and Editing.

TALKEETNA MOUNTAINS (B-5) QUADRANGLE
ALASKA-THIRD JUDICIAL DIVISION
1:63 360 SERIES (TOPOGRAPHIC)



62°15' 149°30'
Mapped, edited, and published by the Geological Survey
Control by USGS and USC&GS
Topography from aerial photographs by multiplex methods
Aerial photographs taken August 1949
Universal Transverse Mercator projection, zone 6
1927 North American datum
Unchecked elevations shown in brown and blue



CONTOUR INTERVAL 100 FEET
AREAS NOT SURVEYED IN DETAIL INDICATED BY BROKEN LINES
DATUM IS MEAN SEA LEVEL

FOR SALE BY U. S. GEOLOGICAL SURVEY, FEDERAL CENTER, DENVER, COLORADO OR WASHINGTON 25, D. C.
A FOLDER DESCRIBING TOPOGRAPHIC MAPS AND SYMBOLS IS AVAILABLE ON REQUEST

USGS
Historical File
Topographic Division

U.S.G.S.
FILE COPY
Inspection and Editing.

ROAD CLASSIFICATION

ALL WEATHER ROADS	DRY WEATHER ROADS
Hard-surface.....None	Improved dirt.....None
Other.....None	Unimproved dirt.....None
Trails.....None	

TALKEETNA MOUNTAINS (B-5), ALASKA
N6215-W14900/15X30
EDITION OF 1952