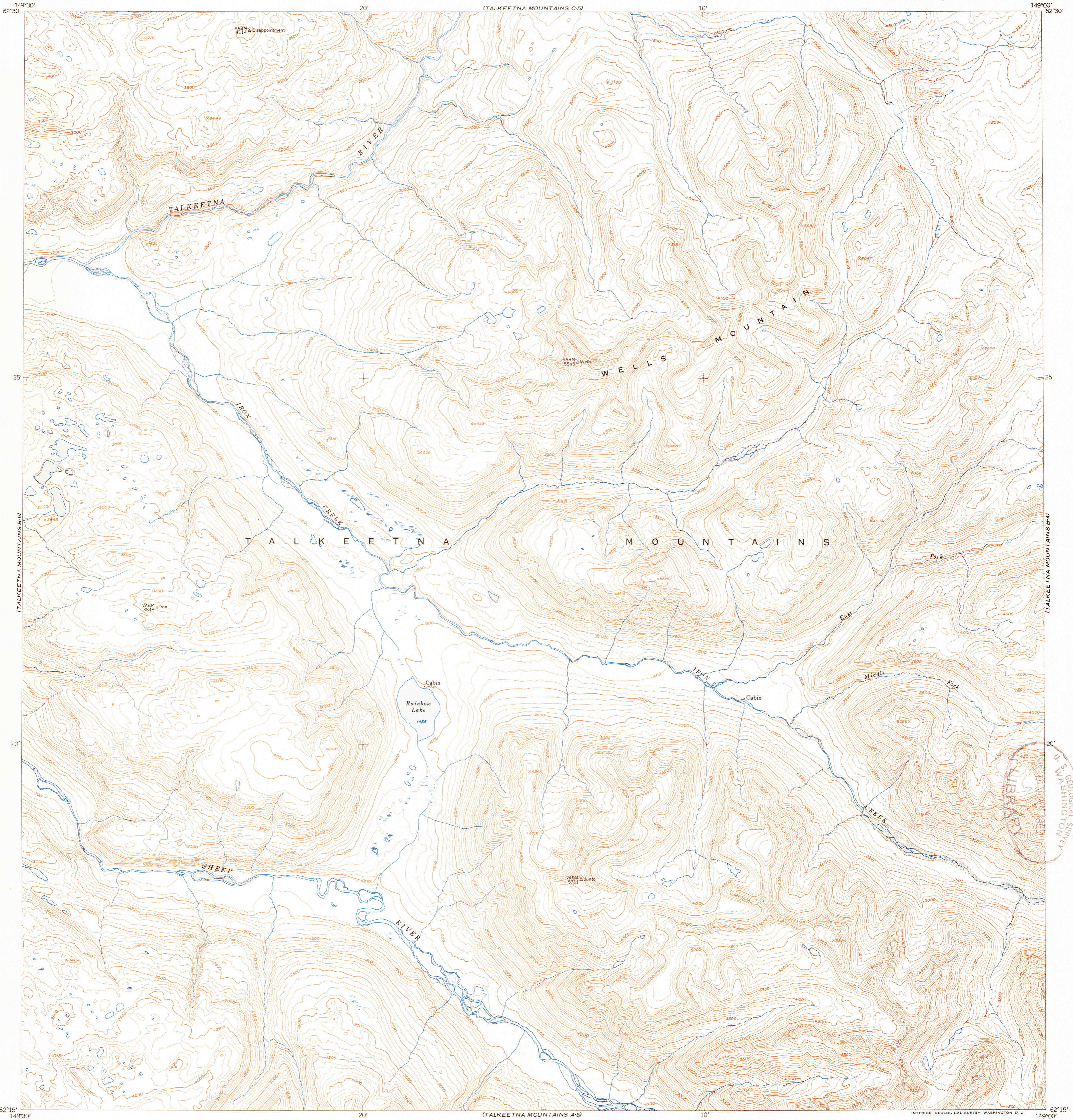


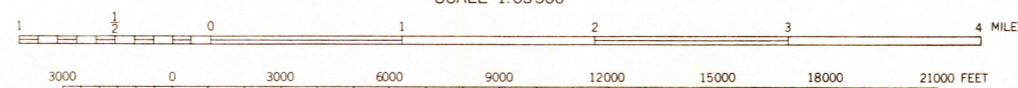
TALKEETNA
MOUNTAINS
C-5

UNITED STATES
DEPARTMENT OF THE INTERIOR
GEOLOGICAL SURVEY

TALKEETNA MOUNTAINS (B-5) QUADRANGLE
ALASKA-THIRD JUDICIAL DIVISION
1:63 360 SERIES (TOPOGRAPHIC)



Mapped, edited, and published by the Geological Survey
 Control by USGS and USC&GS
 Topography from aerial photographs by multiplex methods
 Aerial photographs taken August 1949
 Universal Transverse Mercator projection, zone 6
 1927 North American datum
 Unchecked elevations shown in brown and blue



CONTOUR INTERVAL 100 FEET
 AREAS NOT SURVEYED IN DETAIL INDICATED BY BROKEN LINES
 DATUM IS MEAN SEA LEVEL

ROAD CLASSIFICATION

ALL WEATHER ROADS		DRY WEATHER ROADS	
Hard-surface	None	Improved dirt	None
Other	None	Unimproved dirt	None
		Trails	None

TALKEETNA MOUNTAINS (B-5), ALASKA
 N6215-W14900/15X30

EDITION OF 1952

FOR SALE BY U.S. GEOLOGICAL SURVEY, FEDERAL CENTER, DENVER, COLORADO OR WASHINGTON 25, D. C.
 A FOLDER DESCRIBING TOPOGRAPHIC MAPS AND SYMBOLS IS AVAILABLE ON REQUEST