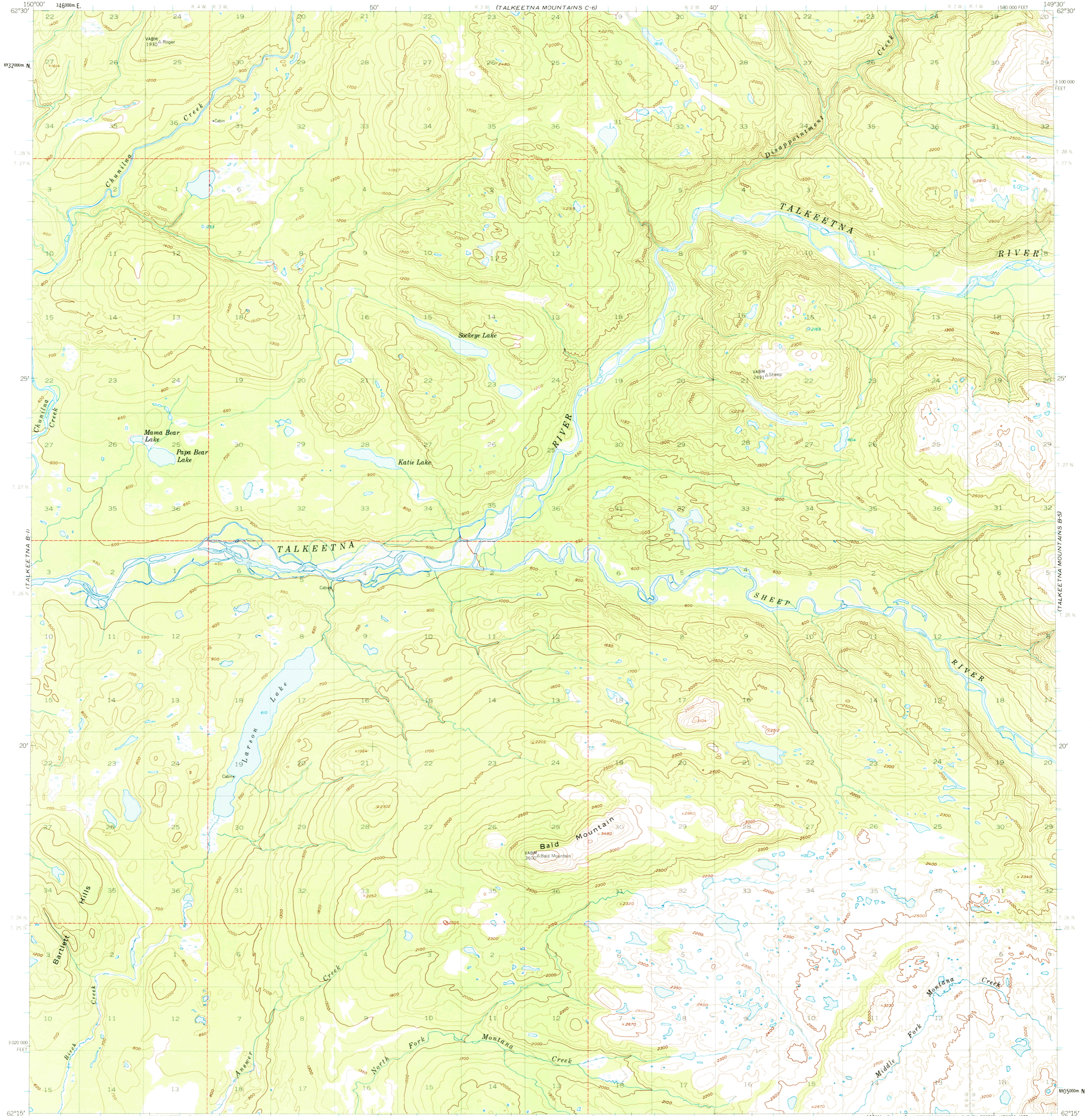
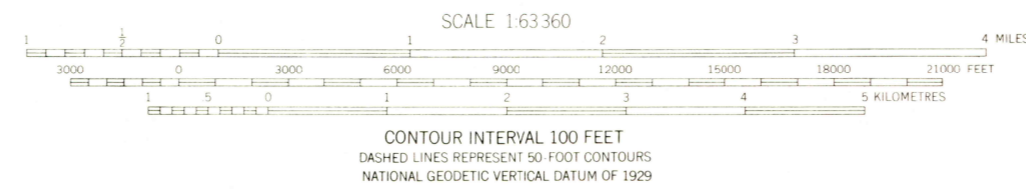
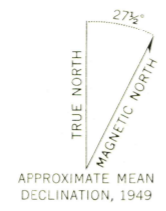


UNITED STATES  
DEPARTMENT OF THE INTERIOR  
GEOLOGICAL SURVEY

TALKEETNA MOUNTAINS (B-6) QUADRANGLE  
ALASKA-MATANUSKA-SUSITNA BOROUGH  
1:63 360 SERIES (TOPOGRAPHIC)



Mapped, edited, and published by the Geological Survey  
Control by USGS and NOS/NOAA  
Topography by photogrammetric methods from aerial  
photographs taken 1949. Map not field checked.  
Universal Transverse Mercator projection. 1927 North American datum  
10,000-foot grid based on Alaska coordinate system, zone 4  
1000-metre Universal Transverse Mercator grid ticks,  
zone 6, shown in blue  
Gray land lines represent unsurveyed and unmarked locations  
predetermined by the Bureau of Land Management.  
Folio S-2, Seward Meridian  
Swamps, as portrayed, indicate only the wetter areas,  
usually of low relief, as interpreted from aerial photographs



HISTORICAL FILE  
TOPOGRAPHIC DIVISION

ROAD CLASSIFICATION  
No roads or trails in this area  
JUL 31 1975

FOR SALE BY U. S. GEOLOGICAL SURVEY  
FAIRBANKS, ALASKA 99701, DENVER, COLORADO 80225, OR RESTON, VIRGINIA 22092  
A FOLDER DESCRIBING TOPOGRAPHIC MAPS AND SYMBOLS IS AVAILABLE ON REQUEST

TALKEETNA MOUNTAINS (B-6), ALASKA  
N6215-W14930/15X30  
1949  
MNCR REVISIONS 1973

4895