

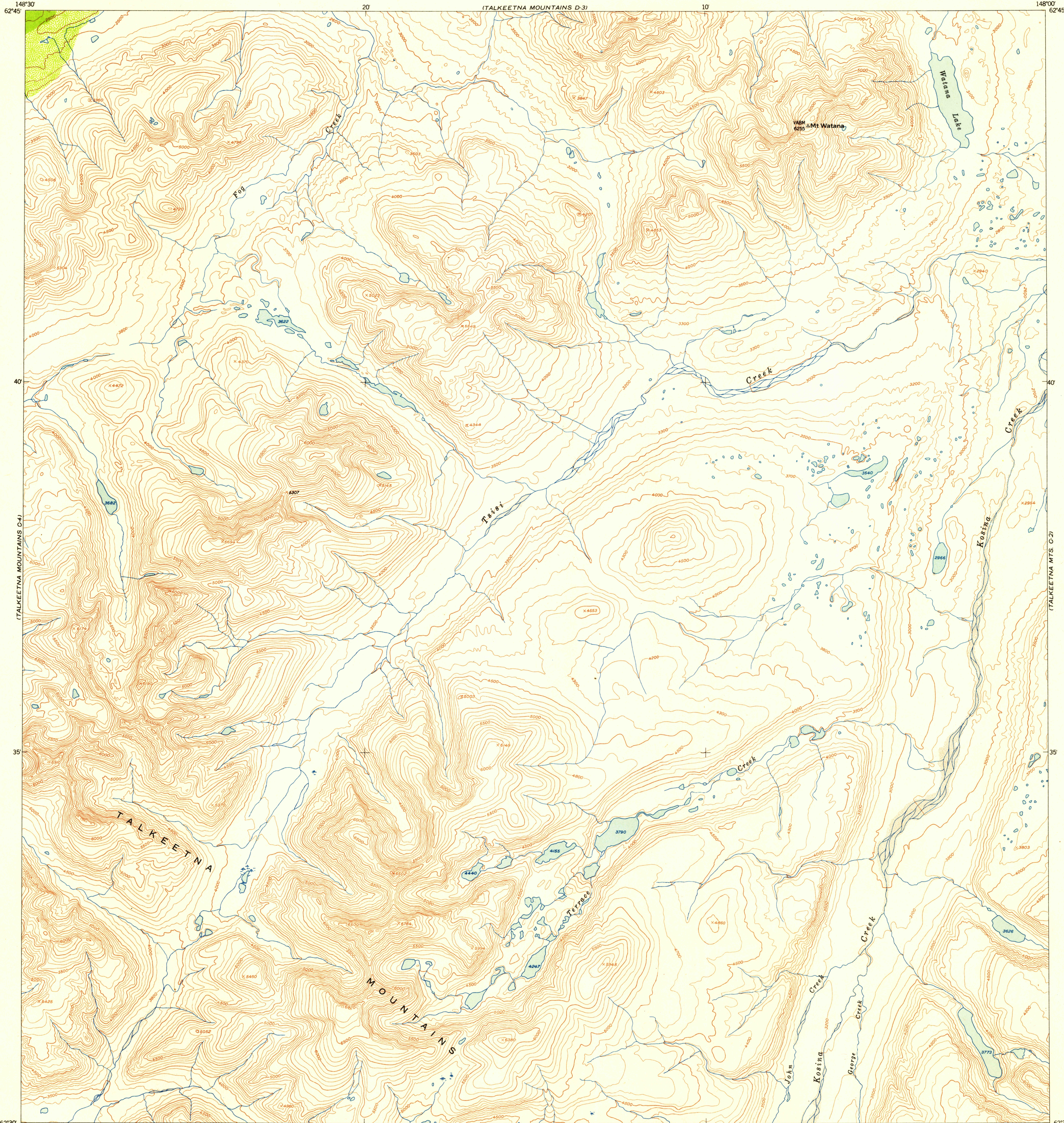
TALKEETNA
Mts. D-1

UNITED STATES
DEPARTMENT OF THE INTERIOR
GEOLOGICAL SURVEY

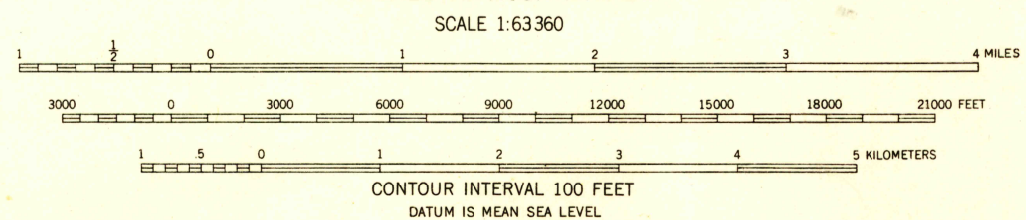
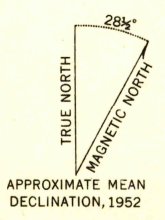
U.S.G.S.
FILE COPY
Inspection and Editing

TALKEETNA MOUNTAINS (C-3) QUADRANGLE
ALASKA-THIRD JUDICIAL DIVISION
1:63 360 SERIES (TOPOGRAPHIC)

TALKEETNA
Mts. D-2



Mapped, edited, and published by the Geological Survey
Control by USGS and USC&GS
Topography from aerial photographs by multiplex methods 1952
Aerial photographs taken 1949
Universal Transverse Mercator projection, zone 6
1927 North American datum
Unchecked elevations are shown in brown and blue



U.S.G.S.
FILE COPY
Inspection and Editing
USGS
Historical File
Topographic Division

ROAD CLASSIFICATION

ALL WEATHER ROADS	DRY WEATHER ROADS
Hard-surface.....None	Improved dirt.....None
Other.....None	Unimproved dirt.....None
Trails.....None	Trails.....None

TALKEETNA MOUNTAINS (C-3), ALASKA
N6230-W14800/15X30
1952

FOR SALE BY U. S. GEOLOGICAL SURVEY, FEDERAL CENTER, DENVER, COLORADO OR WASHINGTON 25, D. C.
A FOLDER DESCRIBING TOPOGRAPHIC MAPS AND SYMBOLS IS AVAILABLE ON REQUEST

TALKEETNA Mts. B-4

TALKEETNA Mts. B-2

AUG 14 1953