

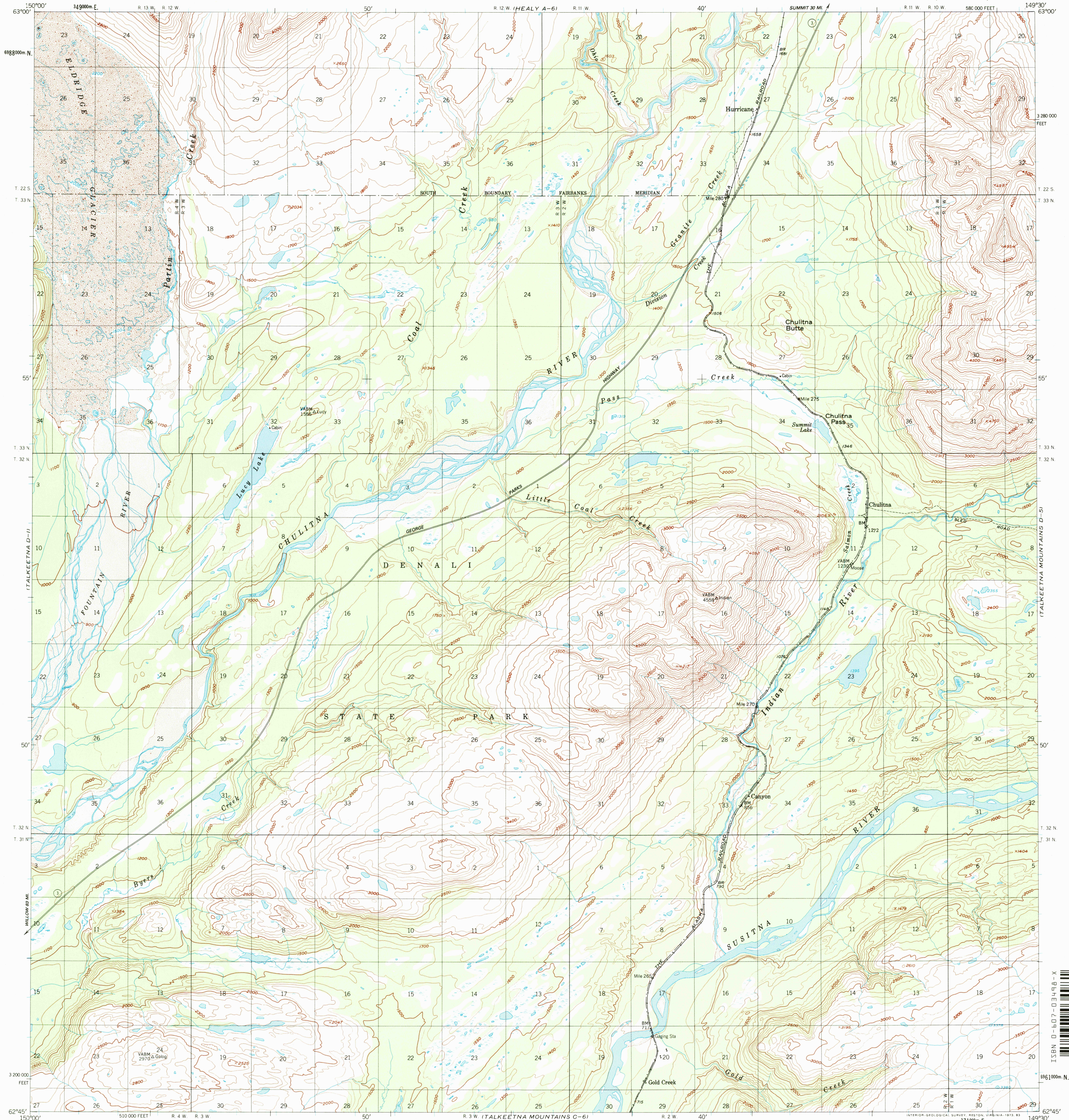
TALKEETNA A-1
TALKEETNA C-11



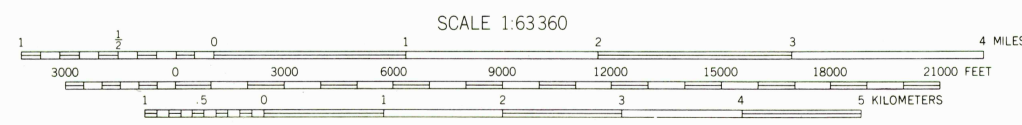
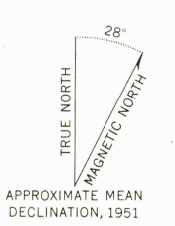
U.S. DEPARTMENT OF THE INTERIOR
U.S. GEOLOGICAL SURVEY

TALKEETNA MOUNTAINS (D-6) QUADRANGLE
ALASKA-MATANUSKA-SUSITNA BOROUGH
1:63 360 SERIES (TOPOGRAPHIC)

HEALY A-51
TALKEETNA MOUNTAINS D-51
TALKEETNA MOUNTAINS C-51



Mapped, edited, and published by the Geological Survey
Control by USGS and USC&GS
Topography by photogrammetric methods from aerial photographs taken 1949, field annotated 1951. Map not field checked
Universal Transverse Mercator projection, 1927 North American datum 10,000-foot grid based on Alaska coordinate system, zone 4 1000-meter Universal Transverse Mercator grid ticks, zone 6, shown in blue
Land lines represent unsurveyed and unmarked locations predetermined by the Bureau of Land Management
Folios S-2, Seward Meridian and F-10, Fairbanks Meridian
Swamps, as portrayed, indicate only the wetter areas, usually of low relief, as interpreted from aerial photographs
There may be private inholdings within the boundaries of the National or State reservations shown on this map



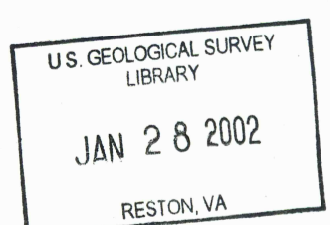
CONTOUR INTERVAL 100 FEET
DOTTED LINES REPRESENT 50 FOOT CONTOURS
NATIONAL GEODETIC VERTICAL DATUM OF 1929

FOR SALE BY U.S. GEOLOGICAL SURVEY, P.O. BOX 25286, DENVER, COLORADO 80225
A FOLDER DESCRIBING TOPOGRAPHIC MAPS AND SYMBOLS IS AVAILABLE ON REQUEST



TALKEETNA MOUNTAINS (D-6), ALASKA
N6245-W14930/15X30

1951
MINOR REVISIONS 1966



ROAD CLASSIFICATION
Trails

