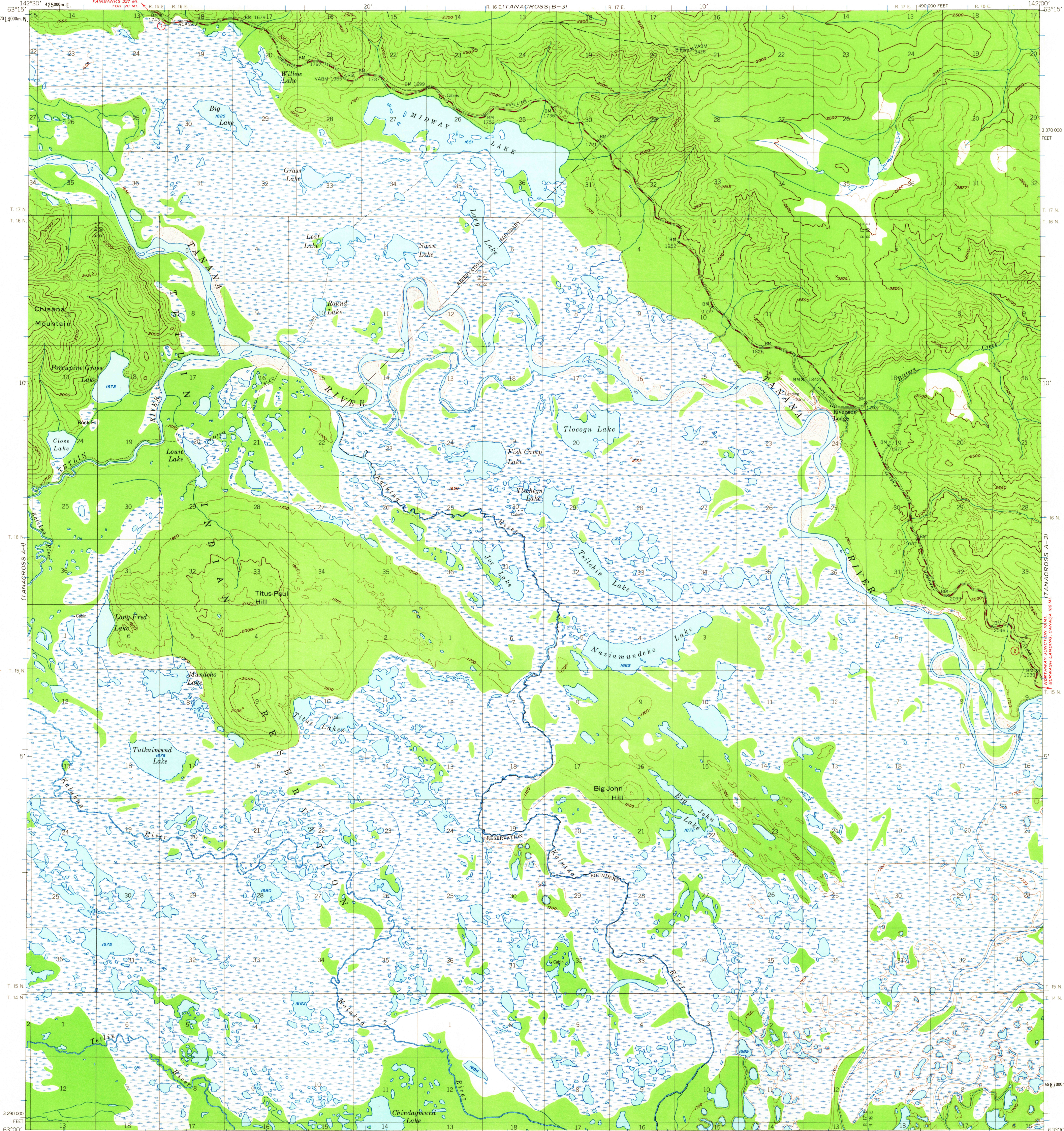
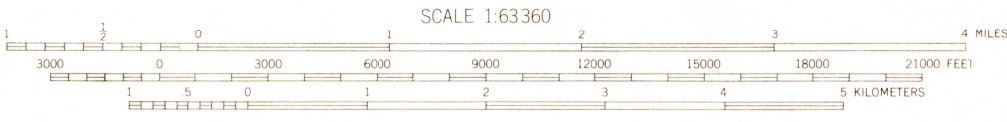
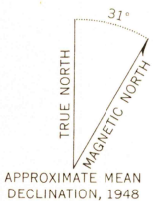


UNITED STATES  
DEPARTMENT OF THE INTERIOR  
GEOLOGICAL SURVEY

TANACROSS (A-3) QUADRANGLE  
ALASKA  
1:63 360 SERIES (TOPOGRAPHIC)



Mapped, edited, and published by the Geological Survey  
Control by USGS and USC&GS  
Topography by photogrammetric methods from aerial photographs  
taken 1948. Map not field checked.  
Universal Transverse Mercator projection, 1927 North American datum  
10,000-foot grid based on Alaska coordinate system, zone 2  
1000-meter Universal Transverse Mercator grid ticks,  
zone 7, shown in blue  
Land lines represent unsurveyed and unmarked locations  
predetermined by the Bureau of Land Management  
Folios CR-1, CR-2, and CR-3, Copper River Meridian  
Swamps, as portrayed, indicate only the wetter areas,  
usually of low relief, as interpreted from aerial photographs



CONTOUR INTERVAL 100 FEET  
DOTTED LINES REPRESENT 50 FOOT CONTOURS  
DATUM IS MEAN SEA LEVEL

USGS  
Historical File  
Topographic Division



ROAD CLASSIFICATION  
Medium-duty — Light-duty  
Unimproved dirt —  
State Route

U.S.G.S. TANACROSS (A-3), ALASKA  
N6300-W14200/15X30

FILE COPY  
TOPOGRAPHIC DIVISION

1948  
MINOR REVISIONS 1965

FOR SALE BY U.S. GEOLOGICAL SURVEY  
FAIRBANKS, ALASKA 99701, DENVER, COLORADO 80225, OR WASHINGTON, D.C. 20242  
A FOLDER DESCRIBING TOPOGRAPHIC MAPS AND SYMBOLS IS AVAILABLE ON REQUEST