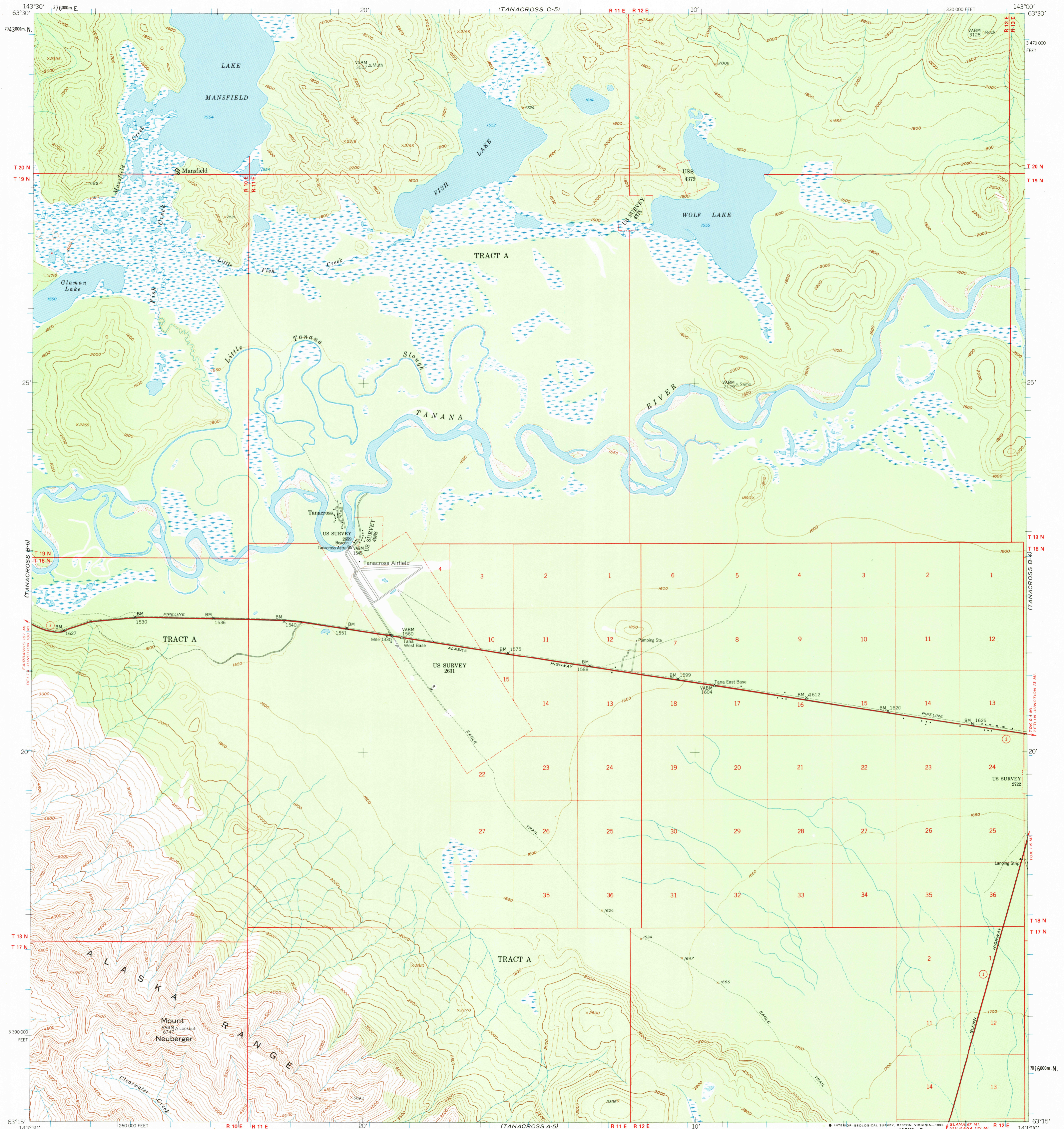
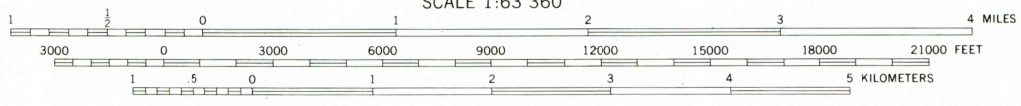
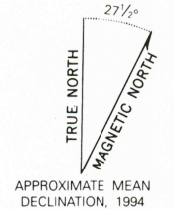


UNITED STATES  
DEPARTMENT OF THE INTERIOR  
GEOLOGICAL SURVEY

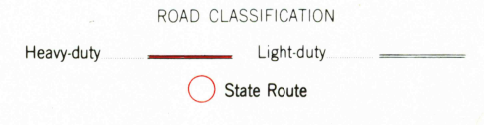
TANACROSS (B-5) QUADRANGLE  
ALASKA  
1:63 360 SERIES (TOPOGRAPHIC)



Produced by the United States Geological Survey  
Control by USGS and NCS/NOAA  
Compiled from aerial photographs taken 1948,  
field annotated 1948. Map not field checked  
North American Datum of 1927 (NAD 27). Projection and  
10,000-foot ticks: Alaska Coordinate System, zone 2 (Transverse Mercator)  
Blue 1000-meter Universal Transverse Mercator ticks, zone 7  
Unsurveyed and unmarked locations  
predetermined by the Bureau of Land Management  
Folio CR-1, Copper River Meridian  
Land lines are omitted in areas of extensive tract surveys  
Swamps, as portrayed, indicate only wetter areas,  
usually of low relief, as interpreted from aerial photographs



CONTOUR INTERVAL 100 FEET  
SUPPLEMENTARY CONTOUR INTERVAL 50 FEET  
AREAS NOT SURVEYED IN DETAIL INDICATED BY BROKEN LINES  
NATIONAL GEODETIC VERTICAL DATUM OF 1929



TANACROSS (B-5), AK  
63143-C1-TF-063

FOR SALE BY U. S. GEOLOGICAL SURVEY  
FAIRBANKS, ALASKA 99701, DENVER, COLORADO 80225, OR RESTON, VIRGINIA 22092  
A FOLDER DESCRIBING TOPOGRAPHIC MAPS AND SYMBOLS IS AVAILABLE ON REQUEST

RETURN TO:  
USGS NMD HISTORICAL MAP ARCHIVES

1948  
MINOR REVISION 1994

TANACROSS B-5  
ISBN # 0607035102 AK 063  
TF  
9 780607 035100