

Mapped, edited, and published by the Geological Survey

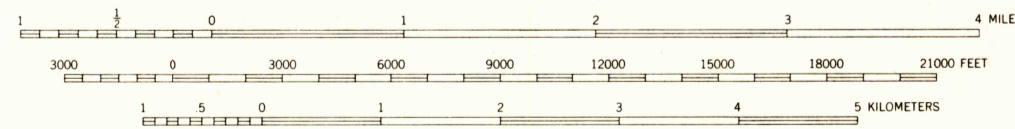
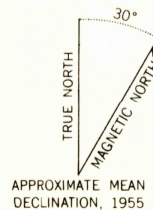
Control by USGS and USC&GS

Topography by photogrammetric methods from aerial photographs taken 1954, field annotated 1955. Map not field checked

Universal Transverse Mercator projection, 1927 North American Datum 10,000-foot grid based on Alaska coordinate system, zone 2 1000-meter Universal Transverse Mercator grid ticks, zone 7, shown in blue

Land lines represent unsurveyed and unmarked locations predetermined by the Bureau of Land Management Folio CR-1, Copper River Meridian

Swamps, as portrayed indicate only the wetter areas, usually of low relief, as interpreted from aerial photographs



CONTOUR INTERVAL 100 FEET
DASHED LINES REPRESENT 50 FOOT CONTOURS
DATUM IS MEAN SEA LEVEL



USGS
Historical File
Topographic Division

ROAD CLASSIFICATION
No roads or trails in this area

FOR SALE BY U.S. GEOLOGICAL SURVEY
FAIRBANKS, ALASKA DENVER 25, COLORADO WASHINGTON 25, D.C.
A FOLDER DESCRIBING TOPOGRAPHIC MAPS AND SYMBOLS IS AVAILABLE ON REQUEST

TANACROSS (D-6), ALASKA
N6345-W14330/15X30

1955
MINOR REVISIONS 1963

2660
MAY 5 1964