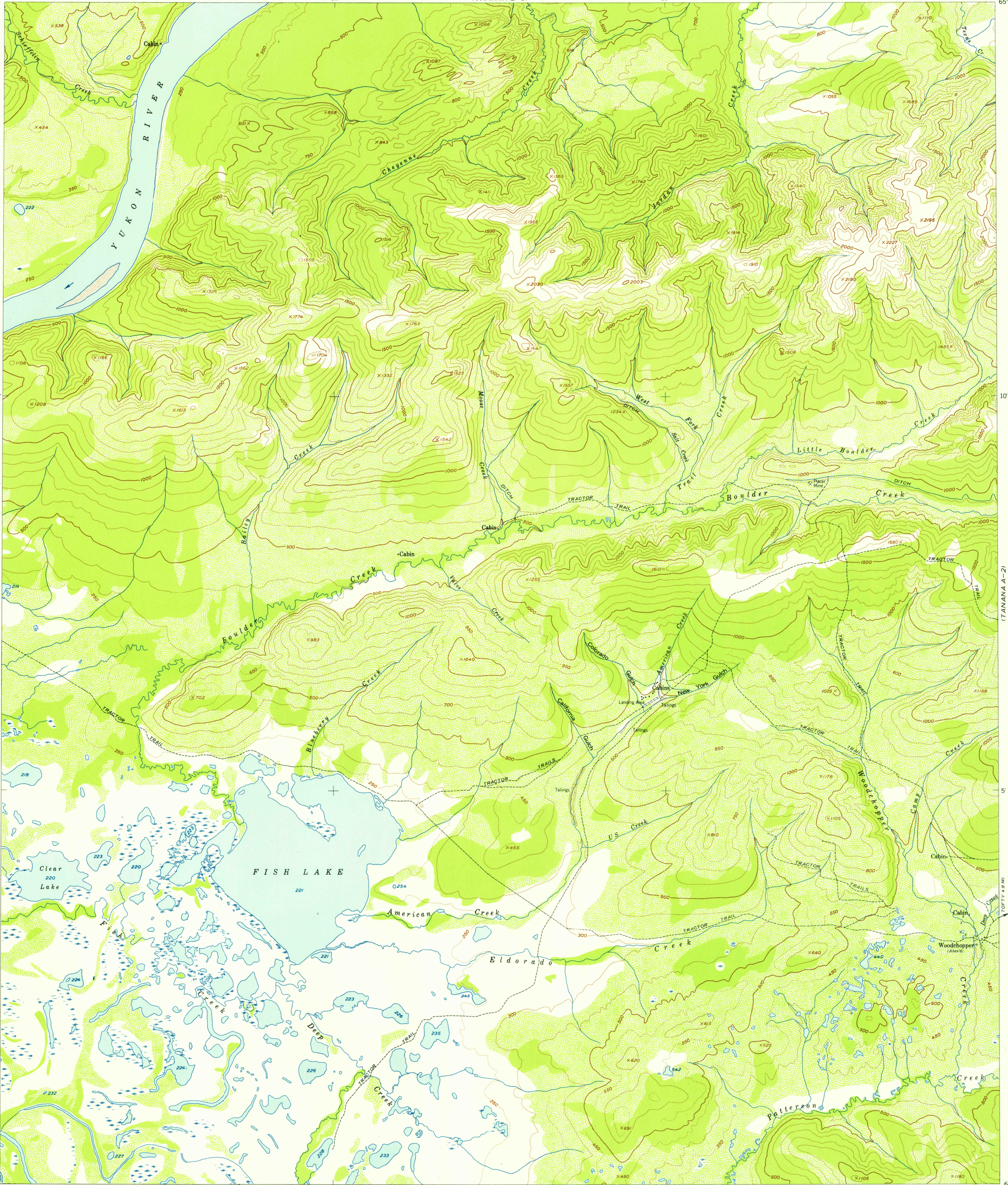
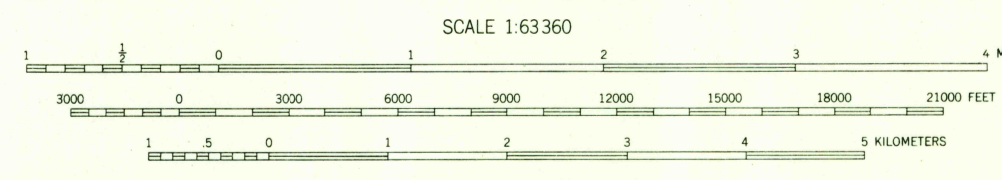
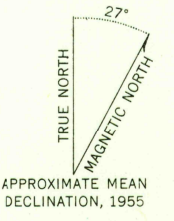


151°30' 65°15' 20 (TANANA B-3) 10 151°00' 65°15'

U.S.G.S.
FILE COPY
TOPOGRAPHIC DIVISION



Mapped, edited, and published by the Geological Survey
Control by USGS
Topography from aerial photographs by multiplex methods 1955
Aerial photographs taken 1952. Map not field checked
Universal Transverse Mercator projection, zone 5
1927 North American datum
Unchecked elevations are shown in brown and blue



USGS
Historical File
Topographic Division

ROAD CLASSIFICATION

ALL WEATHER ROADS	DRY WEATHER ROADS
Hard-surface _____ None	Improved dirt _____ None
Other _____ None	Unimproved dirt _____ None
	Trails _____



FOR SALE BY U.S. GEOLOGICAL SURVEY
FAIRBANKS, ALASKA FEDERAL CENTER, DENVER 2, COLORADO WASHINGTON 25, D.C.
A FOLDER DESCRIBING TOPOGRAPHIC MAPS AND SYMBOLS IS AVAILABLE ON REQUEST

U.S.G.S.
FILE COPY
TOPOGRAPHIC DIVISION
TANANA (A-3), ALASKA
N6500-W15100/15X30
1952

JUL 3 1956
2095