

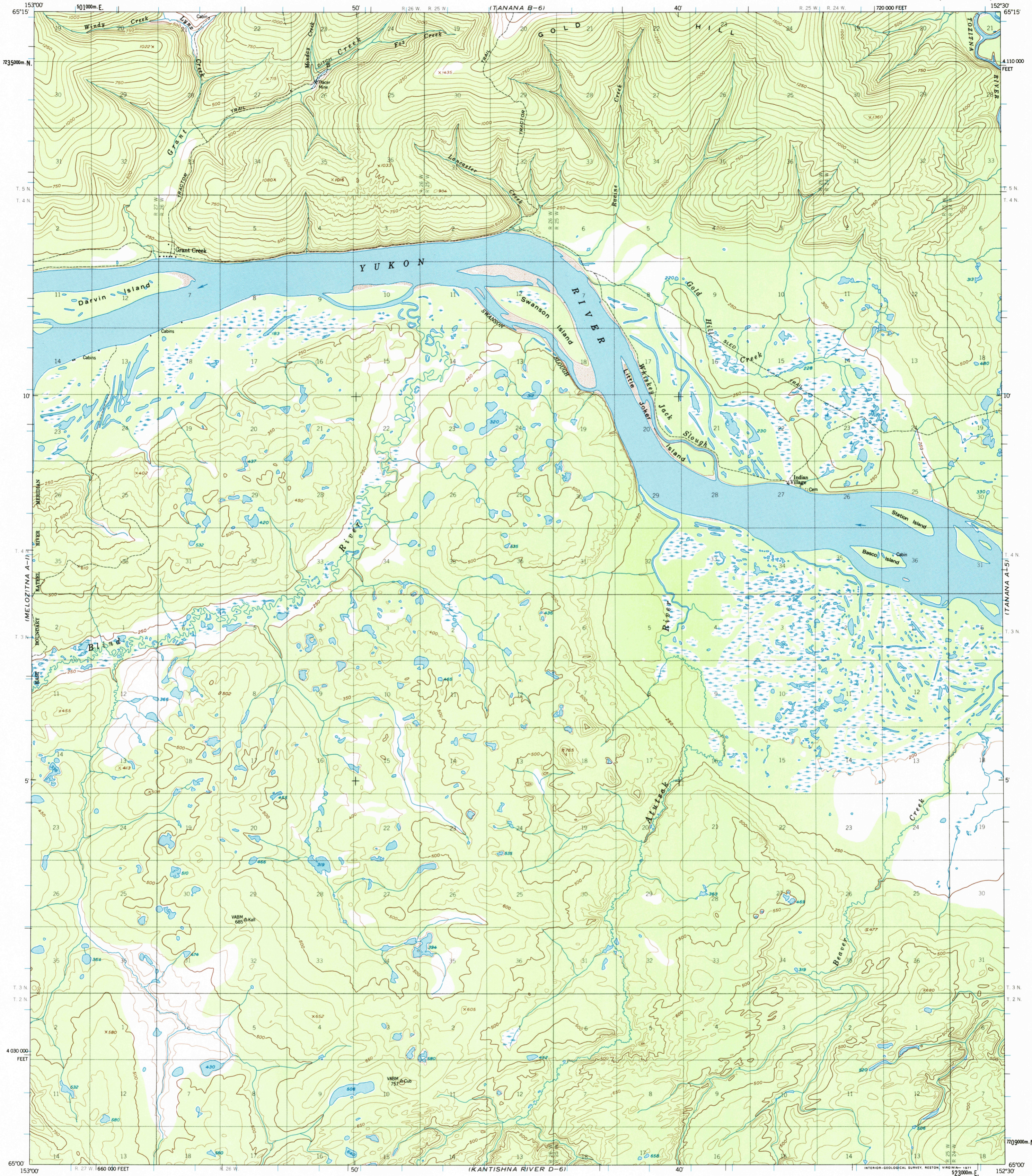
(MELOZITNA B-1)

(TANANA B-5)

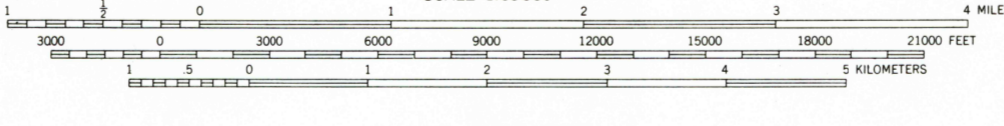
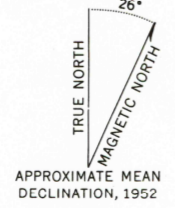


U.S. DEPARTMENT OF THE INTERIOR
U.S. GEOLOGICAL SURVEY

TANANA (A-6) QUADRANGLE
ALASKA
1:63 360 SERIES (TOPOGRAPHIC)



Mapped, edited, and published by the Geological Survey
Control by USGS and USC&GS
Topography by photogrammetric methods from aerial photographs taken 1952. Map not field checked.
Universal Transverse Mercator projection 1927 North American datum 10,000-foot grid based on Alaska coordinate system, zone 5 1000-meter Universal Transverse Mercator grid ticks, zone 5, shown in blue.
Land lines represent unsurveyed and unmarked locations predetermined by the Bureau of Land Management Folio F-5, Fairbanks Meridian.
Swamps, as portrayed, indicate only the wetter areas, usually of low relief, as interpreted from aerial photographs.



CONTOUR INTERVAL 50 FEET
DATUM IS MEAN SEA LEVEL



ROAD CLASSIFICATION
Trails

TANANA (A-6), ALASKA
N6500-W15230/15X30
1952
MINOR REVISIONS 1969

FOR SALE BY U.S. GEOLOGICAL SURVEY, P.O. BOX 25286, DENVER, COLORADO 80225
A FOLDER DESCRIBING TOPOGRAPHIC MAPS AND SYMBOLS IS AVAILABLE ON REQUEST



RECEIVED
JAN 17 2003
USGS NWD
HISTORICAL MAP ARCHIVES



(RUBY D-1)

(KANTISHNA RIVER D-5)