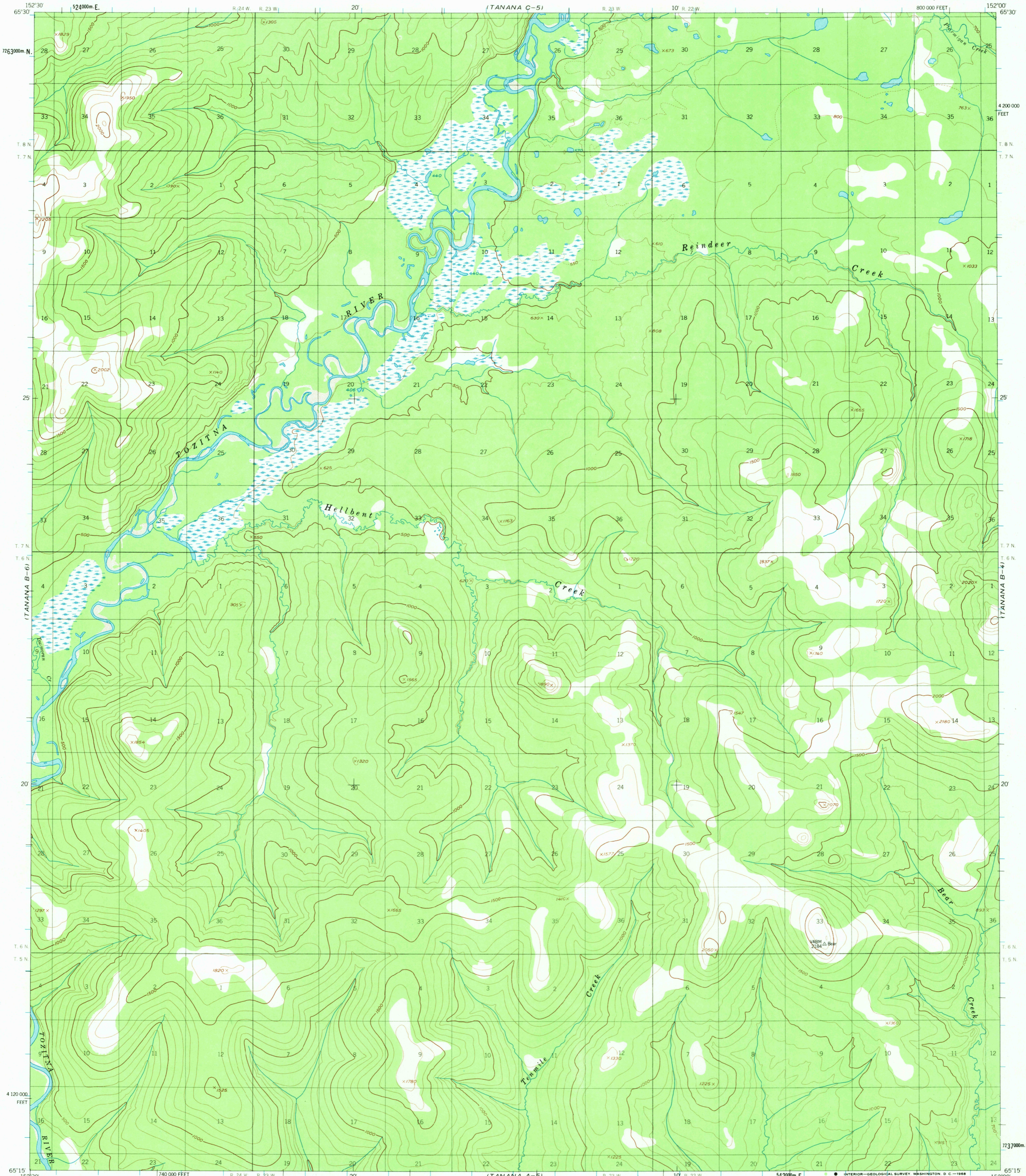


TANANA C-6)

TANANA C-4)

UNITED STATES
DEPARTMENT OF THE INTERIOR
GEOLOGICAL SURVEY

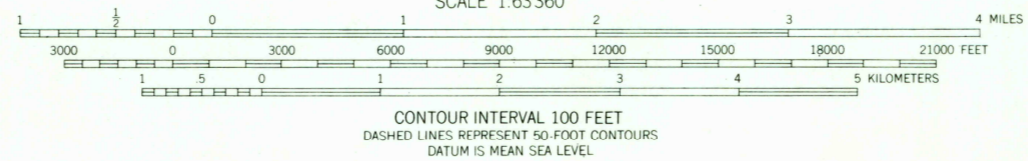
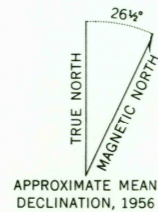
TANANA (B-5) QUADRANGLE
ALASKA
1:63 360 SERIES (TOPOGRAPHIC)



TANANA A-6)

TANANA A-4)

Mapped, edited, and published by the Geological Survey
Control by USGS
Topography by photogrammetric methods from aerial photographs taken 1952 and 1953, field annotated 1956. Map not field checked
Universal Transverse Mercator projection, 1927 North American datum
10,000-foot grid based on Alaska coordinate system, zone 5
1000-meter Universal Transverse Mercator grid ticks, zone 5, shown in blue
Land lines represent unsurveyed and unmarked locations predetermined by the Bureau of Land Management
Folio F-5, Fairbanks Meridian
Swamps, as portrayed, indicate only the wetter areas, usually of low relief, as interpreted from aerial photographs



ROAD CLASSIFICATION
Trails

FOR SALE BY U.S. GEOLOGICAL SURVEY
FAIRBANKS, ALASKA 99701, DENVER, COLORADO 80225, OR WASHINGTON, D.C. 20242
A FOLDER DESCRIBING TOPOGRAPHIC MAPS AND SYMBOLS IS AVAILABLE ON REQUEST

RETURN TO:
USGS AND HISTORICAL MAP ARCHIVES

TANANA (B-5), ALASKA
N6515-W15200/15X30
1956
MINOR REVISIONS 1967

TANANA B-5
ISBN # 0607035358 AK 053
TF

