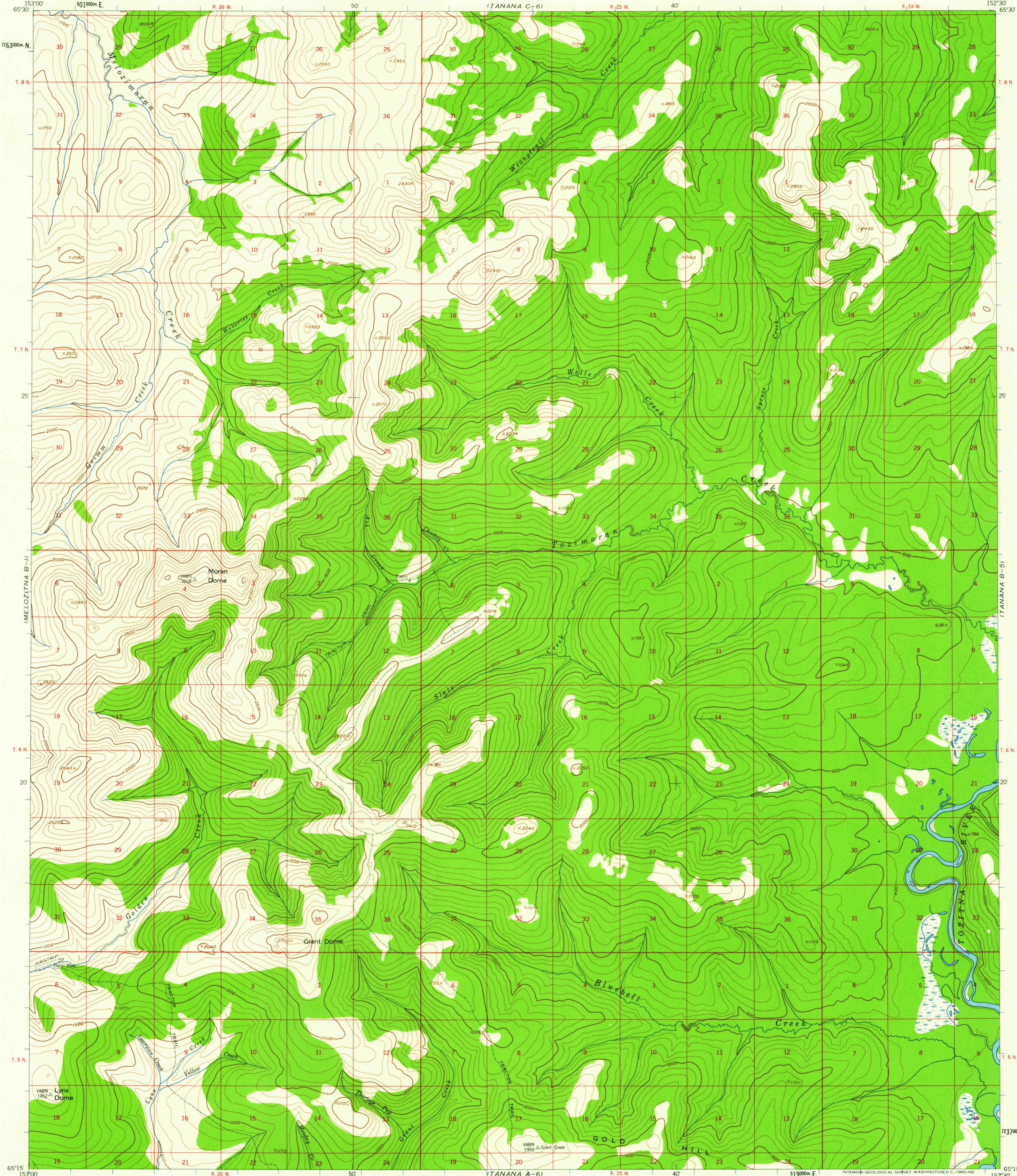


MELOZITNA C-1

TANANA C-5

UNITED STATES  
DEPARTMENT OF THE INTERIOR  
GEOLOGICAL SURVEY

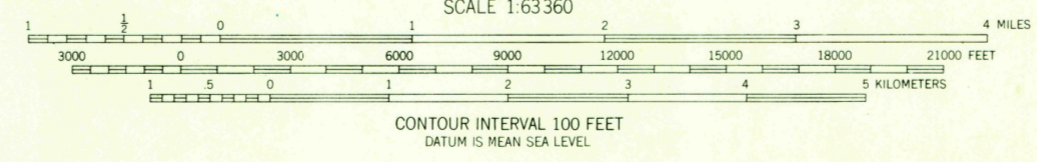
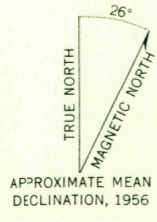
TANANA (B-6) QUADRANGLE  
ALASKA  
1:63 360 SERIES (TOPOGRAPHIC)



MELOZITNA A-1

TANANA A-5

Mapped, edited, and published by the Geological Survey  
Control by USGS and USC&GS  
Topography from aerial photographs by photogrammetric methods 1958. Aerial photographs taken 1952, field annotated 1956. Map not field checked  
Universal Transverse Mercator projection  
1927 North American datum  
1000-meter Universal Transverse Mercator grid ticks, zone 5, shown in blue  
Land lines represent unsurveyed and unmarked locations predetermined by the Bureau of Land Management. Folio F-5  
Swamps as portrayed, indicate only the wetter areas, usually of low relief, as interpreted from aerial photographs  
Unchecked elevations are shown in brown



USGS  
Historical File  
Topographic Division

ROAD CLASSIFICATION  
Trails

FOR SALE BY U.S. GEOLOGICAL SURVEY  
FAIRBANKS, ALASKA DENVER 25, COLORADO WASHINGTON 25, D.C.  
A FOLDER DESCRIBING TOPOGRAPHIC MAPS AND SYMBOLS IS AVAILABLE ON REQUEST



TANANA (B-6), ALASKA  
N6515-W15230/15X30  
1956

U.S.G.S.  
FILE COPY  
TOPOGRAPHIC DIVISION

APR - 4 1960

2510