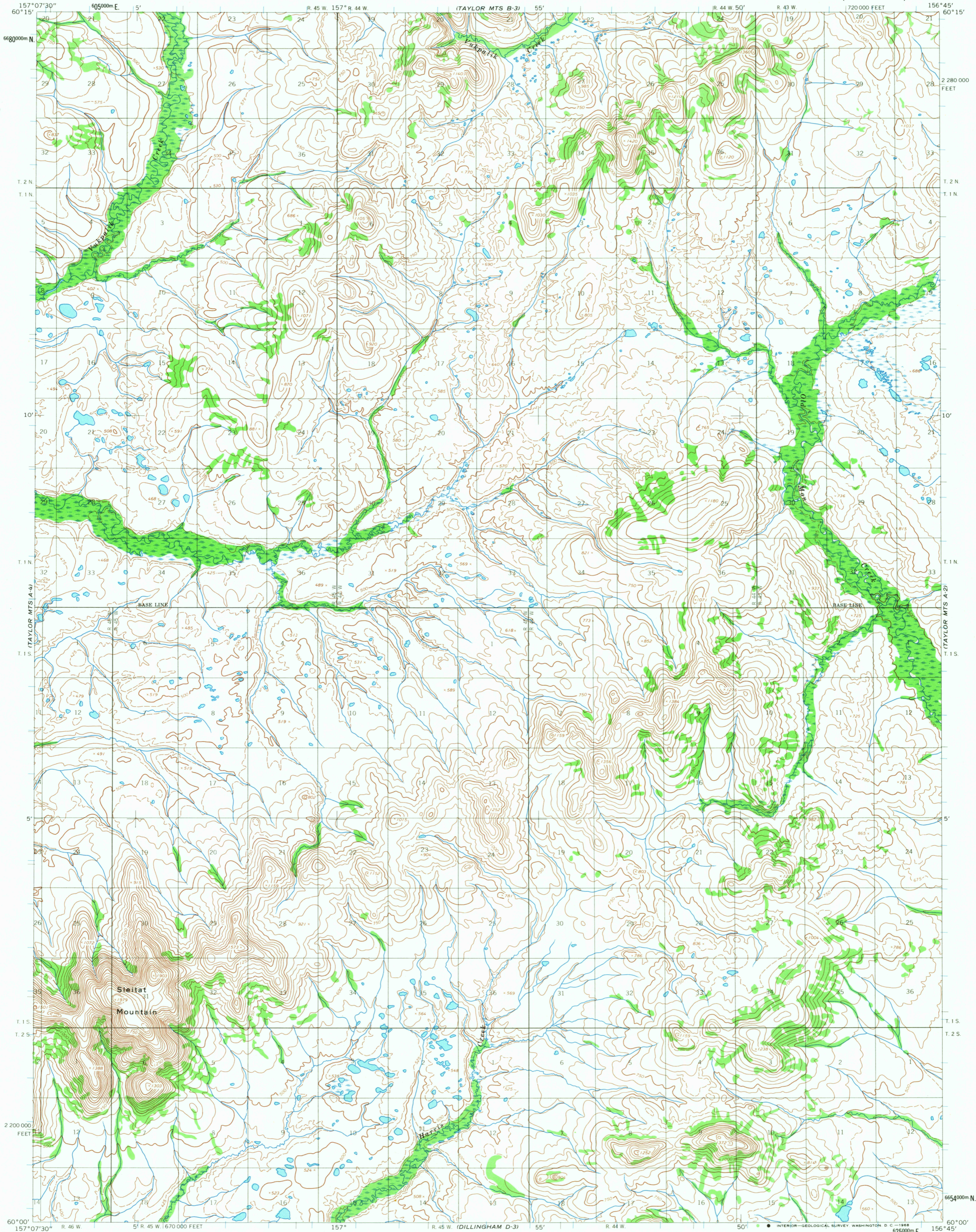
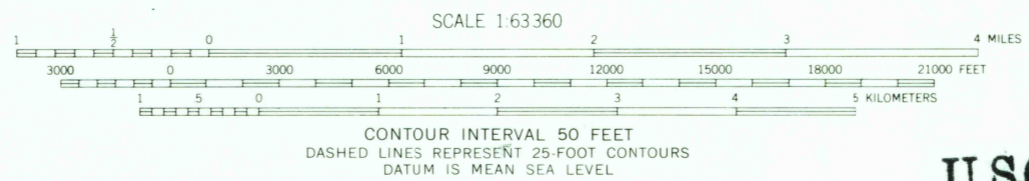
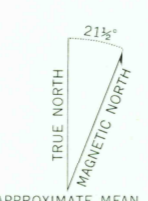


UNITED STATES  
DEPARTMENT OF THE INTERIOR  
GEOLOGICAL SURVEY

TAYLOR MOUNTAINS (A-3) QUADRANGLE  
ALASKA  
1:63 360 SERIES (TOPOGRAPHIC)



Mapped by the Army Map Service  
Edited and published by the Geological Survey  
Control by USCGS and USCE  
Topography by photogrammetric methods from aerial photographs  
taken 1953 and 1955, field annotated 1954. Map not field checked  
Universal Transverse Mercator projection. 1927 North American datum  
10,000-foot grid based on Alaska coordinate system, zone 6  
1000-meter Universal Transverse Mercator grid ticks,  
zone 4, shown in blue  
Land lines represent unsurveyed and unmarked locations  
predetermined by the Bureau of Land Management  
Folios S-11 and S-18, Seward Meridian



USGS  
Historical File  
Topographic Division

ROAD CLASSIFICATION  
No roads or trails in this area

U.S.G.S.  
FILE COPY  
TOPOGRAPHIC DIVISION

TAYLOR MOUNTAINS (A-3), ALASKA  
N6000-W15645/15X22.5  
1954

FOR SALE BY U.S. GEOLOGICAL SURVEY  
FAIRBANKS, ALASKA 99701, DENVER, COLORADO 80225, OR WASHINGTON, D. C. 20542  
A FOLDER DESCRIBING TOPOGRAPHIC MAPS AND SYMBOLS IS AVAILABLE ON REQUEST

3125  
AUG 19 1958