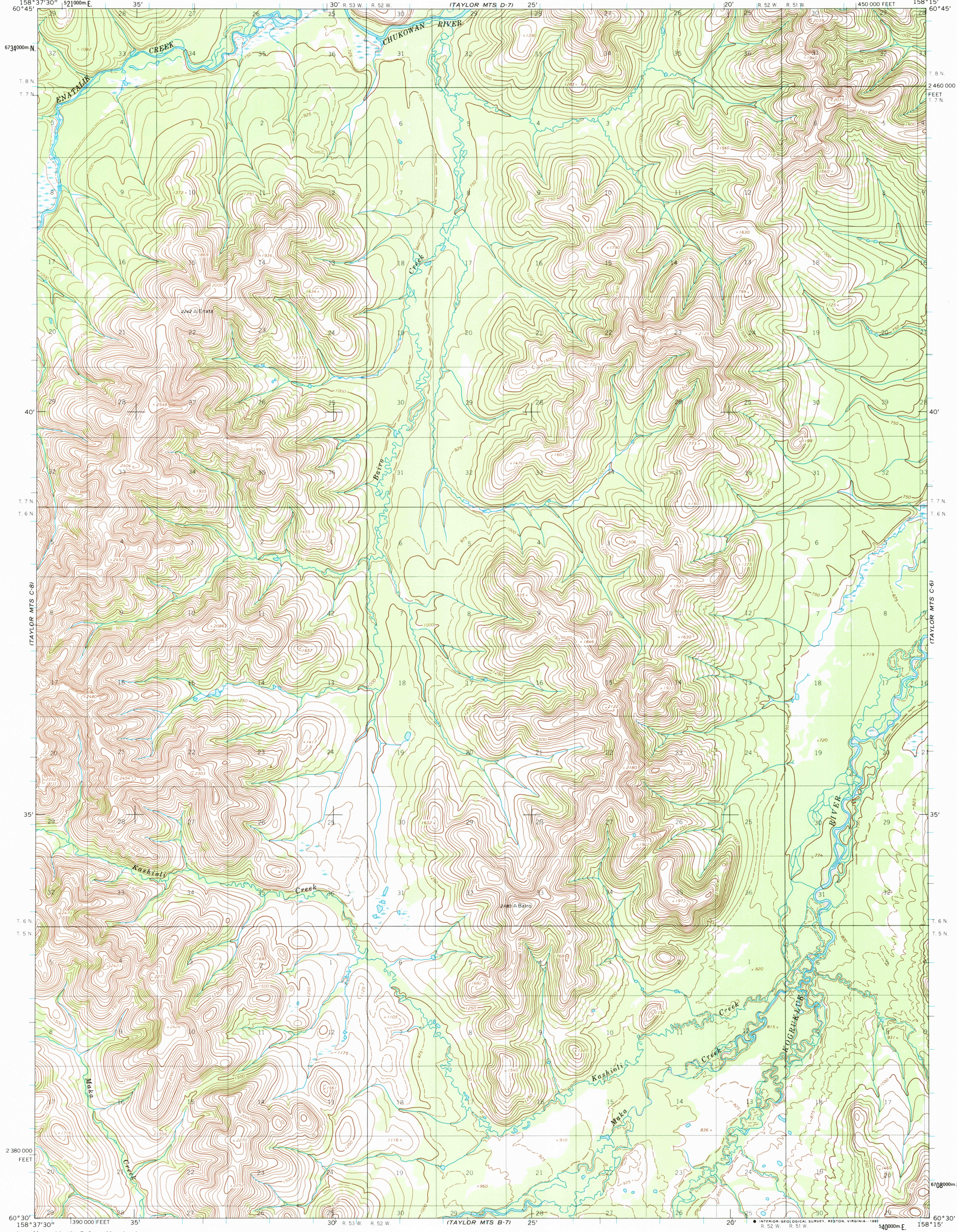


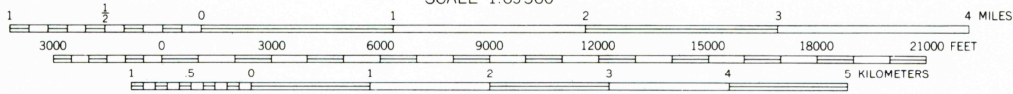
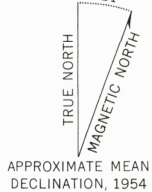
UNITED STATES
DEPARTMENT OF THE INTERIOR
GEOLOGICAL SURVEY

TAYLOR MOUNTAINS (C-7) QUADRANGLE
ALASKA
1:63 360 SERIES (TOPOGRAPHIC)



Mapped by the Defense Mapping Agency
Edited and published by the Geological Survey
Control by NOS/NOAA and USCE

Topography by photogrammetric methods from aerial photographs
taken 1953 and 1955. Field annotated 1954. Map not field checked
Projection and 1000-meter grid ticks shown in blue:
Universal Transverse Mercator, zone 4
10,000-foot grid ticks based on Alaska coordinate
system, zone 6. 1927 North American Datum
To place on the predicted North American Datum 1983 move
the projection lines 82 meters north and 130 meters east
Land lines represent unsurveyed and unmarked locations
predetermined by the Bureau of Land Management
Folio S-10, Seward Meridian
Swamps, as portrayed, indicate only the wetter areas,
usually of low relief, as interpreted from aerial photographs



CONTOUR INTERVAL 50 FEET
DASHED LINES REPRESENT 25-FOOT CONTOURS
NATIONAL GEODETIC VERTICAL DATUM OF 1929

FOR SALE BY U.S. GEOLOGICAL SURVEY
FAIRBANKS, ALASKA 99701, DENVER, COLORADO 80225, OR RESTON, VIRGINIA 22092
A FOLDER DESCRIBING TOPOGRAPHIC MAPS AND SYMBOLS IS AVAILABLE ON REQUEST



TAYLOR MOUNTAINS (C-7), ALASKA
60158-E3-TF-063

1954

ROAD CLASSIFICATION
No roads or trails in this area

USGS NHD HISTORICAL MAP ARCHIVES

TAYLOR MOUNTAINS C-7
ISBN # 0607035722 AK 063
TF

