

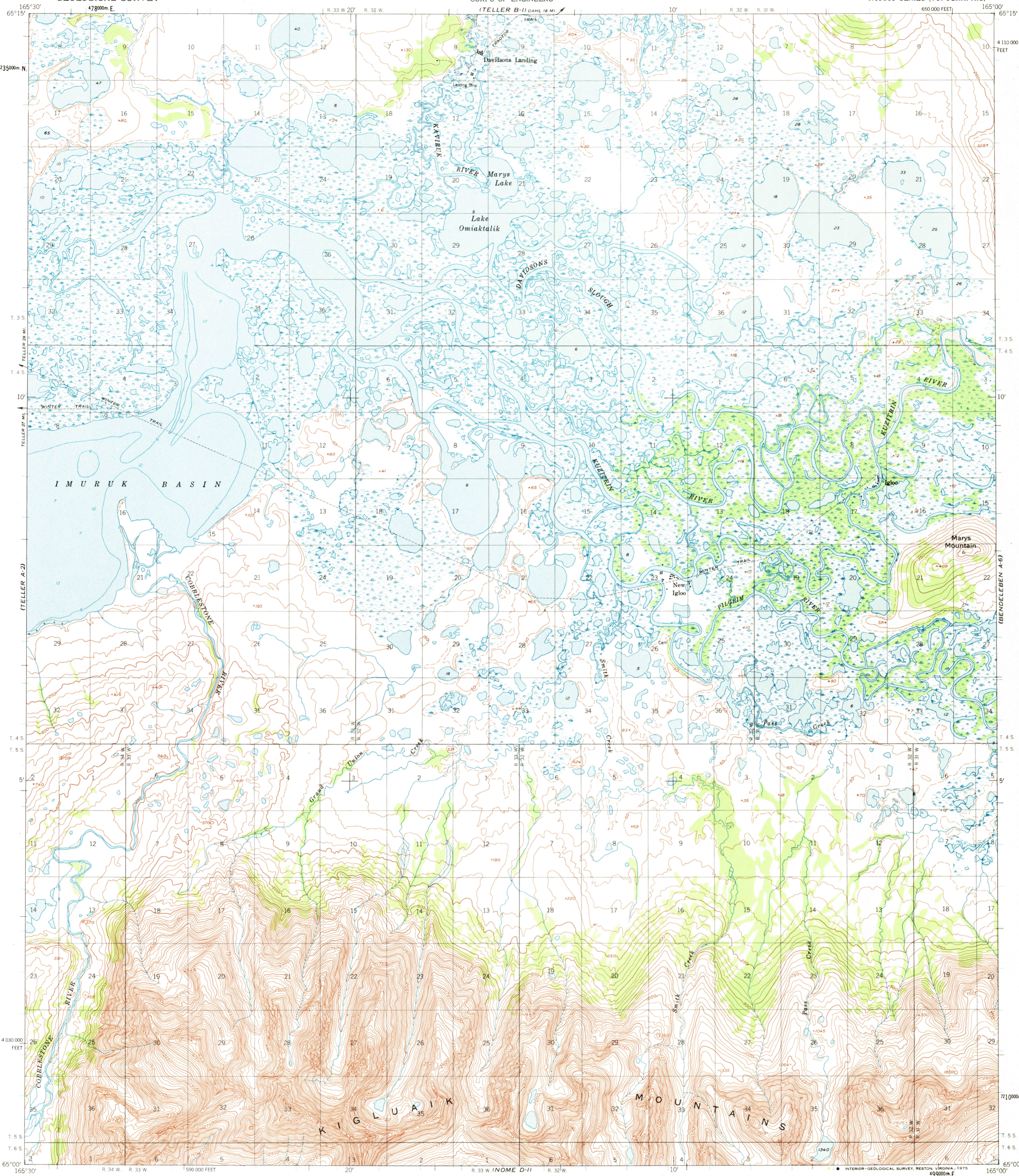
(TELLER B-2)

UNITED STATES
DEPARTMENT OF THE INTERIOR
GEOLOGICAL SURVEY

UNITED STATES
DEPARTMENT OF THE ARMY
CORPS OF ENGINEERS

TELLER (A-1) QUADRANGLE
ALASKA
1:63360 SERIES (TOPOGRAPHIC)

(BENDELEBEN B-6)



Mapped by the Army Map Service
Published for civil use by the Geological Survey
Control by USGS, USC&GS, and USCE

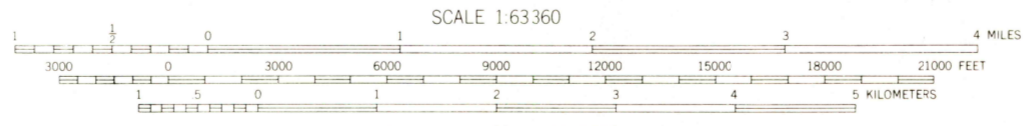
Topography by photogrammetric methods from aerial photographs taken 1950. Map not field checked.

Selected hydrographic data compiled by USC&GS
This information is not intended for navigational purposes.

Universal Transverse Mercator projection, 1927 North American datum
10,000-foot grid based on Alaska coordinate system, zone 8
1000-meter Universal Transverse Mercator grid ticks, zone 3, shown in blue

Land lines represent unsurveyed and unmarked locations
pre-determined by the Bureau of Land Management
Folios K.13 and K.14, Kateel River Meridian

Lake elevations are unchecked



CONTOUR INTERVAL 50 FEET
DASHED LINES REPRESENT 25-FOOT CONTOURS
NATIONAL GEODETIC VERTICAL DATUM OF 1929
DEPTH CURVES AND SOUNDINGS IN FEET DATUM IS MEAN LOWER LOW WATER
SHORELINE SHOWN REPRESENTS THE APPROXIMATE LINE OF MEAN HIGH WATER
THE AVERAGE RANGE OF TIDE IS APPROXIMATELY 2 FEET

FOR SALE BY U. S. GEOLOGICAL SURVEY
FAIRBANKS, ALASKA 99701, DENVER, COLORADO 80225, OR RESTON, VIRGINIA 22092
A FOLDER DESCRIBING TOPOGRAPHIC MAPS AND SYMBOLS IS AVAILABLE ON REQUEST



ROAD CLASSIFICATION
Trails

TELLER (A-1), ALASKA
N6500-W16500/15x30

1950
MINOR REVISIONS 1973

AUG 25 1975

USGS
HISTORICAL FILE
TOPOGRAPHIC DIVISION

2250