

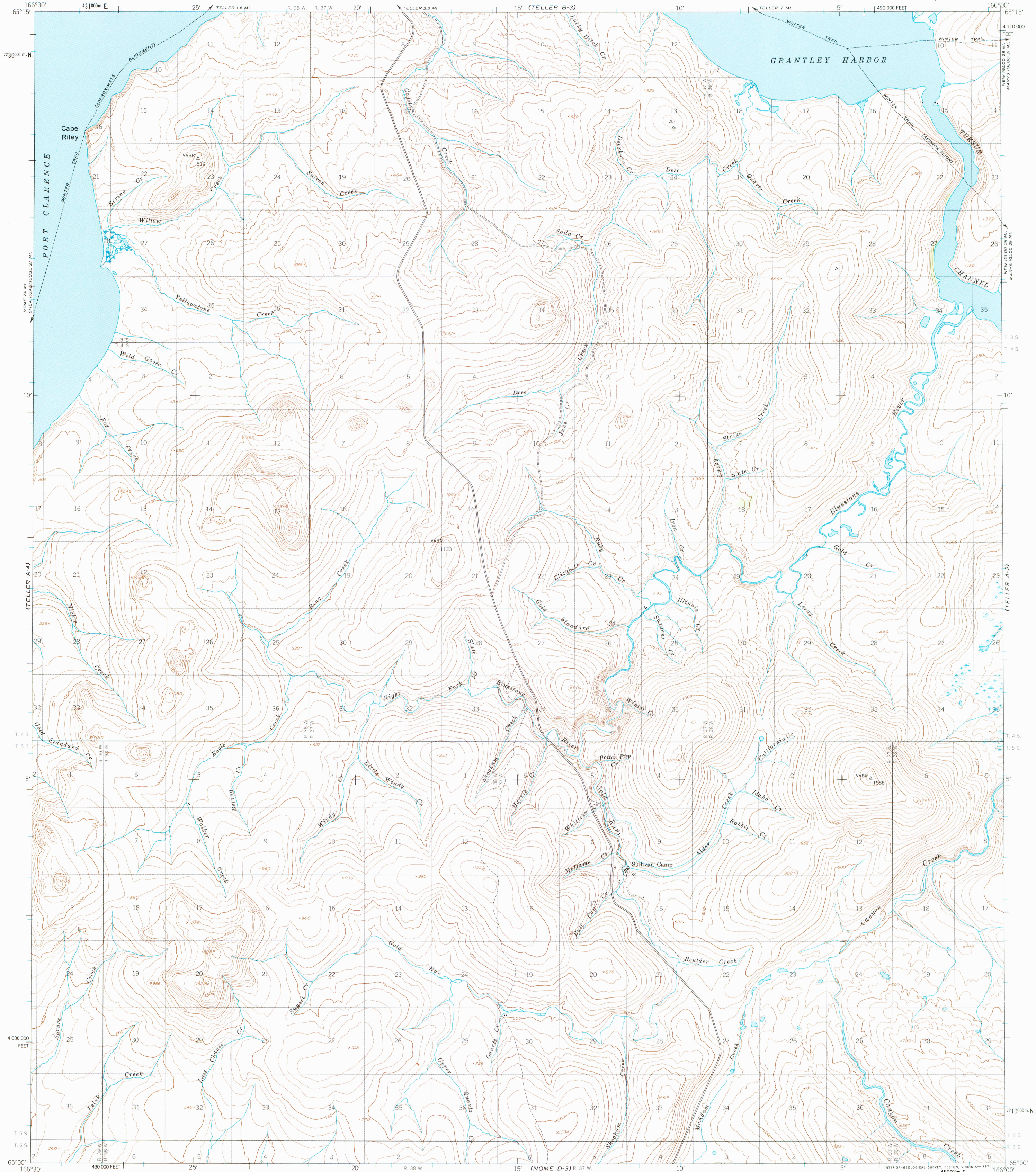
(TELLER B-1)

UNITED STATES  
DEPARTMENT OF THE INTERIOR  
GEOLOGICAL SURVEY

UNITED STATES  
DEPARTMENT OF THE ARMY  
CORPS OF ENGINEERS

TELLER (A-3) QUADRANGLE  
ALASKA  
1:63360 SERIES (TOPOGRAPHIC)

(TELLER B-2)



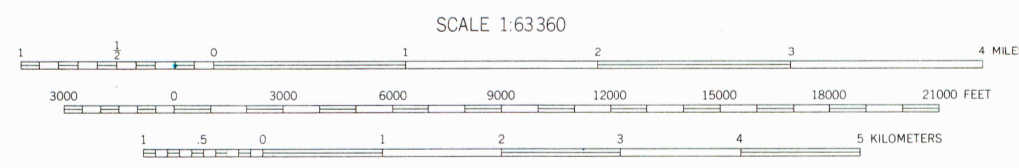
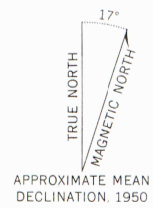
Mapped by the Army Map Service  
Published for civil use by the Geological Survey  
Control by USC&GS, USGS and USCE

Topography by photogrammetric methods from aerial photographs  
taken 1950. Map not field checked

Selected hydrographic data compiled from USC&GS Charts  
This information is not intended for navigational purposes

Universal Transverse Mercator projection, 1927 North American datum  
10,000-foot grid based on Alaska coordinate system, zone 8  
1000-meter Universal Transverse Mercator grid ticks,  
zone 3, shown in blue

Land lines represent unsurveyed and unmarked locations  
predetermined by the Bureau of Land Management  
Folio K-14, Kotel River Meridian

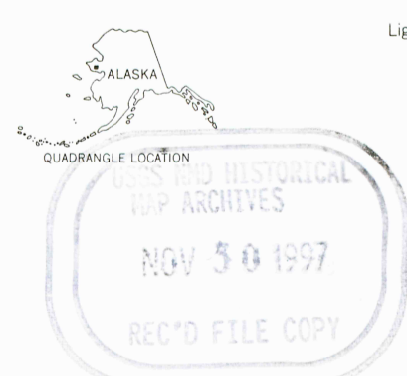


SCALE 1:63360

CONTOUR INTERVAL 50 FEET  
DASHED LINES REPRESENT 25-FOOT CONTOURS  
DATUM IS MEAN SEA LEVEL  
DEPTH CURVES AND SOUNDINGS IN FEET-DATUM IS MEAN LOWER LOW WATER  
SHORELINE SHOWN REPRESENTS THE APPROXIMATE LINE OF MEAN HIGH WATER  
THE AVERAGE RANGE OF TIDE IS APPROXIMATELY 1 FOOT

THIS MAP COMPLIES WITH MAP ACCURACY STANDARDS  
FOR SALE BY U.S. GEOLOGICAL SURVEY, P.O. BOX 25286, DENVER, COLORADO 80225  
A FOLDER DESCRIBING TOPOGRAPHIC MAPS AND SYMBOLS IS AVAILABLE ON REQUEST

ROAD CLASSIFICATION  
Light-duty ————— Unimproved dirt - - - - -



TELLER (A-3), ALASKA  
N6500-W16600/15x30  
1950  
MINOR REVISIONS: 1970



(NOME D-4)

(NOME D-2)