

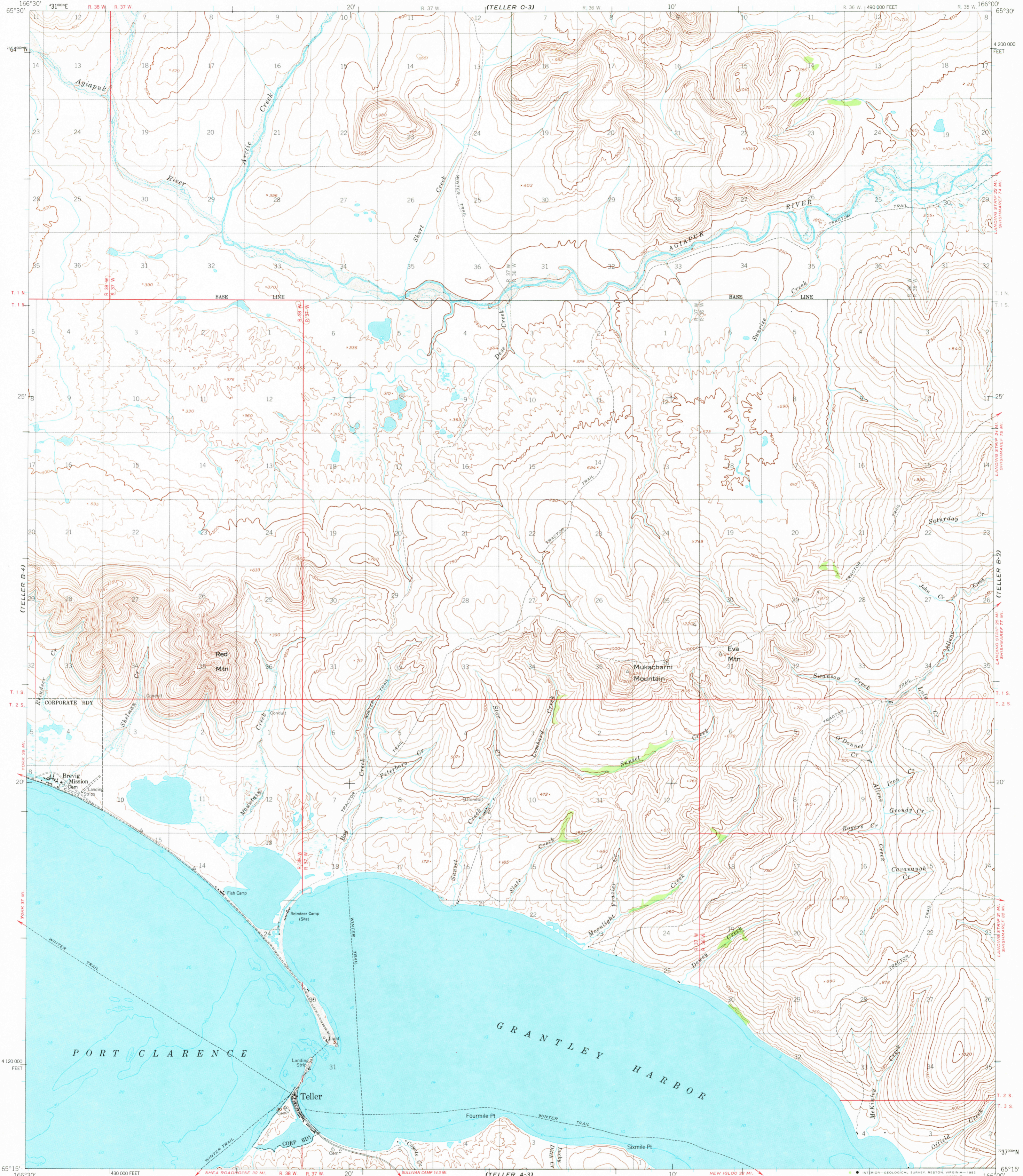
(TELLER C-4)

UNITED STATES
DEPARTMENT OF THE INTERIOR
GEOLOGICAL SURVEY

UNITED STATES
DEPARTMENT OF THE ARMY
CORPS OF ENGINEERS

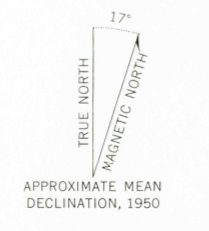
TELLER (B-3) QUADRANGLE
ALASKA
1:63 360 SERIES (TOPOGRAPHIC)

(TELLER C-2)



(TELLER A-4)

Mapped by the Army Map Service
Published for civil use by the Geological Survey
Control by USGS, USC&GS and USCE
Topography by photogrammetric methods from aerial photographs
taken 1950. Map not field checked
Selected hydrographic data compiled by USC&GS
This information is not intended for navigational purposes
Universal Transverse Mercator projection, 1927 North American datum
10,000-foot grid based on Alaska coordinate system, zone 8
1000-meter Universal Transverse Mercator grid ticks,
zone 3, shown in blue
Red tint indicates area in which only landmark buildings are shown
Gray land lines represent unsurveyed and unmarked locations
predetermined by the Bureau of Land Management
Folios K-5 and K-14, Katel River Meridian
Swamps, as portrayed, indicate only the wetter areas,
usually of low relief, as interpreted from aerial photographs
To place on the predicted North American Datum 1983 move
the projection lines 86 meters north and 130 meters east



CONTOUR INTERVAL 50 FEET
DASHED LINES REPRESENT 25-FOOT CONTOURS
NATIONAL GEODETIC VERTICAL DATUM OF 1929
DEPTH CURVES AND SOUNDINGS IN FEET—DATUM IS MEAN LOWER LOW WATER
SHORELINE SHOWN REPRESENTS THE APPROXIMATE LINE OF MEAN HIGH WATER
THE MEAN RANGE OF TIDE IS APPROXIMATELY 1 FOOT
FOR SALE BY U. S. GEOLOGICAL SURVEY
FAIRBANKS, ALASKA 99701, DENVER, COLORADO 80225, OR RESTON, VIRGINIA 22092
A FOLDER DESCRIBING TOPOGRAPHIC MAPS AND SYMBOLS IS AVAILABLE ON REQUEST



ROAD CLASSIFICATION
Light-duty..... Unimproved dirt.....

TELLER (B-3), ALASKA
N6515-W16600/15x30
1950
MINOR REVISIONS 1981

SEP 30 1982

1300