

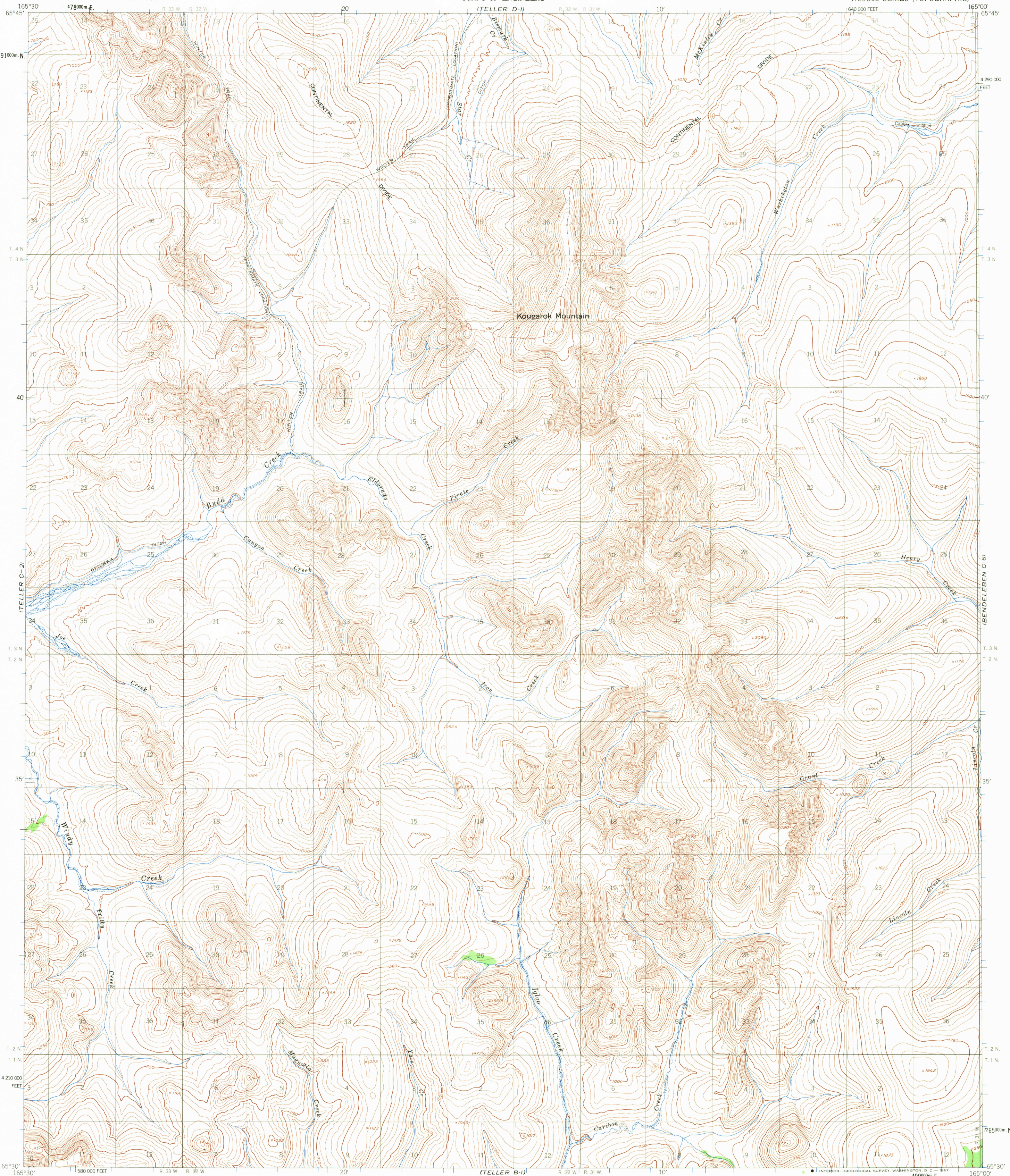
(TELLER D-2)

UNITED STATES
DEPARTMENT OF THE INTERIOR
GEOLOGICAL SURVEY

UNITED STATES
DEPARTMENT OF THE ARMY
CORPS OF ENGINEERS

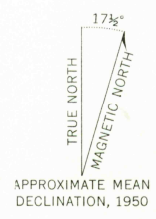
TELLER (C-1) QUADRANGLE
ALASKA
1:63 360 SERIES (TOPOGRAPHIC)

(BENDELEBEN D-6)



(TELLER B-2)

Mapped by the Army Map Service
Published for civil use by the Geological Survey
Control by USGS, USC&GS, and USCE
Topography by photogrammetric methods from aerial photographs
taken 1949 and 1950. Map not field checked
Universal Transverse Mercator projection, 1927 North American datum
10,000-foot grid based on Alaska coordinate system, zone 8
1000-meter Universal Transverse Mercator grid ticks,
zone 3, shown in blue
Land lines represent unsurveyed and unmarked locations
predetermined by the Bureau of Land Management
Folios K-5 and K-6, Katzei River Meridian



FOR SALE BY U. S. GEOLOGICAL SURVEY
FAIRBANKS, ALASKA 99701, DENVER, COLORADO 80225, OR WASHINGTON, D. C. 20242
A FOLDER DESCRIBING TOPOGRAPHIC MAPS AND SYMBOLS IS AVAILABLE ON REQUEST

U.S.G.S. ALASKA
FIELD COPY
TOPOGRAPHIC DIVISION

USGS
Historical File
Topographic Division

TELLER (C-1), ALASKA
N 6530-W 16500/15x30
1950
MAJOR REVISIONS 1946

(BENDELEBEN E-6)

2175
FEB 15 1968