

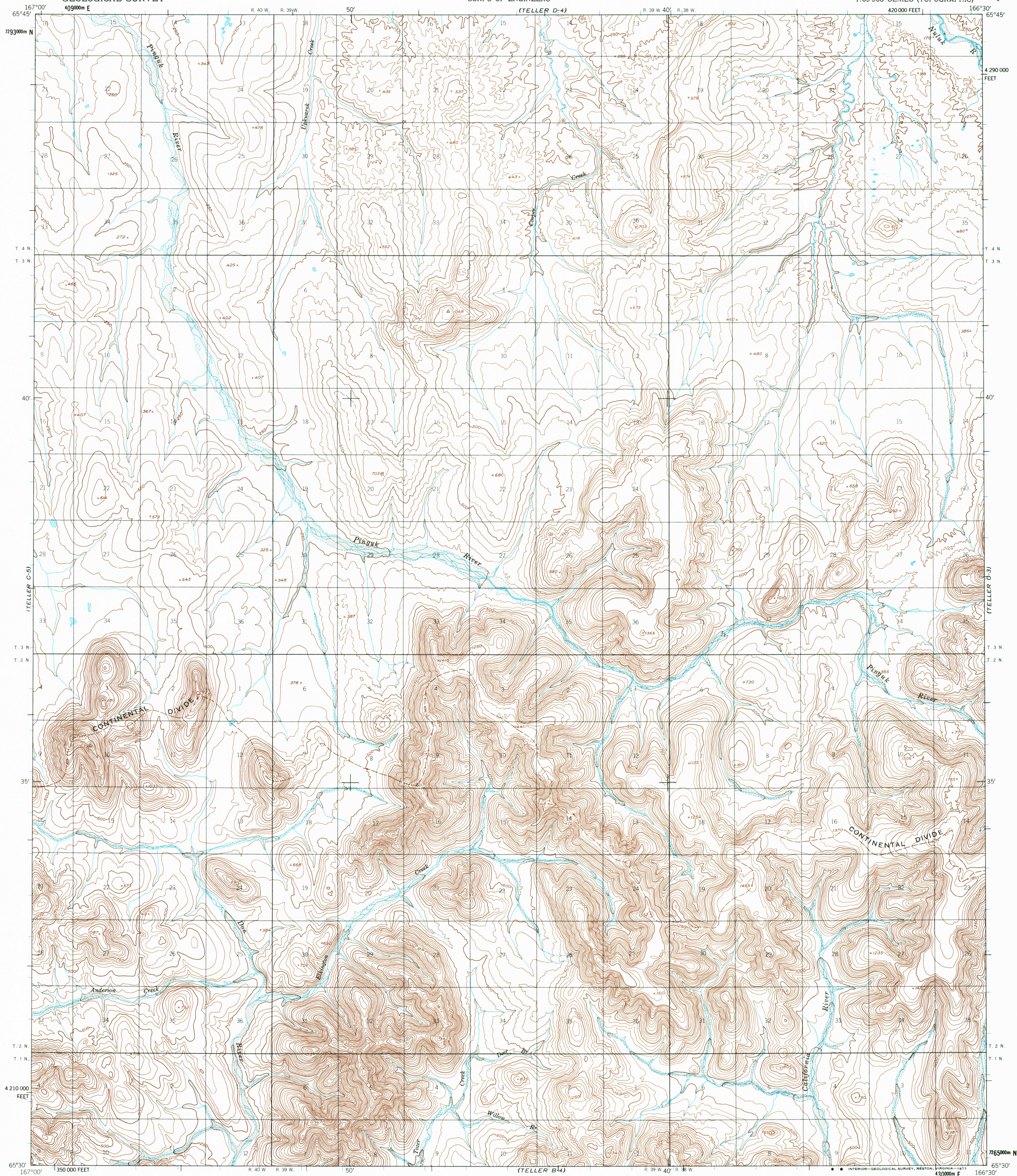
(TELLER D-3)

UNITED STATES  
DEPARTMENT OF THE INTERIOR  
GEOLOGICAL SURVEY

UNITED STATES  
DEPARTMENT OF THE ARMY  
CORPS OF ENGINEERS

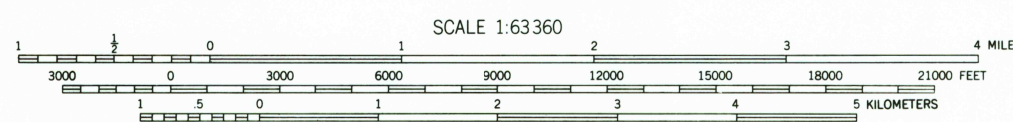
TELLER (C-4) QUADRANGLE  
ALASKA  
1:63 360 SERIES (TOPOGRAPHIC)

(TELLER D-3)



Maped by the Army Map Service  
Published for civil use by the Geological Survey  
Control by USGS, USC&GS, and USCE  
Topography by photogrammetric methods from aerial photographs  
taken 1949-1950. Map not field checked  
Universal Transverse Mercator projection, 1927 North American datum  
10,000-foot grid ticks based on Alaska coordinate system, zone 8  
1000-meter Universal Transverse Mercator grid ticks,  
zone 3, shown in blue  
Land lines represent unsurveyed and unmarked locations  
predetermined by the Bureau of Land Management  
Folio K-5, Kateel River Meridian

TRUE NORTH  
MAGNETIC NORTH  
APPROXIMATE MEAN  
DECLINATION, 1950



CONTOUR INTERVAL 50 FEET  
DASHED LINES REPRESENT 25-FOOT CONTOURS  
NATIONAL GEODETIC VERTICAL DATUM OF 1929



ROAD CLASSIFICATION  
No roads or trails in this area

FOR SALE BY U. S. GEOLOGICAL SURVEY  
FAIRBANKS, ALASKA 99701, DENVER, COLORADO 80225, OR RESTON, VIRGINIA 22092  
A FOLDER DESCRIBING TOPOGRAPHIC MAPS AND SYMBOLS IS AVAILABLE ON REQUEST

TELLER (C-4), ALASKA  
N6530-W16630/15x30  
1950  
LIMITED REVISIONS 1976

RETURN TO:  
USGS AND HISTORICAL MAP ARCHIVES

TELLER C-4  
ISBN # 060703596X  
AK 063  
TF

