

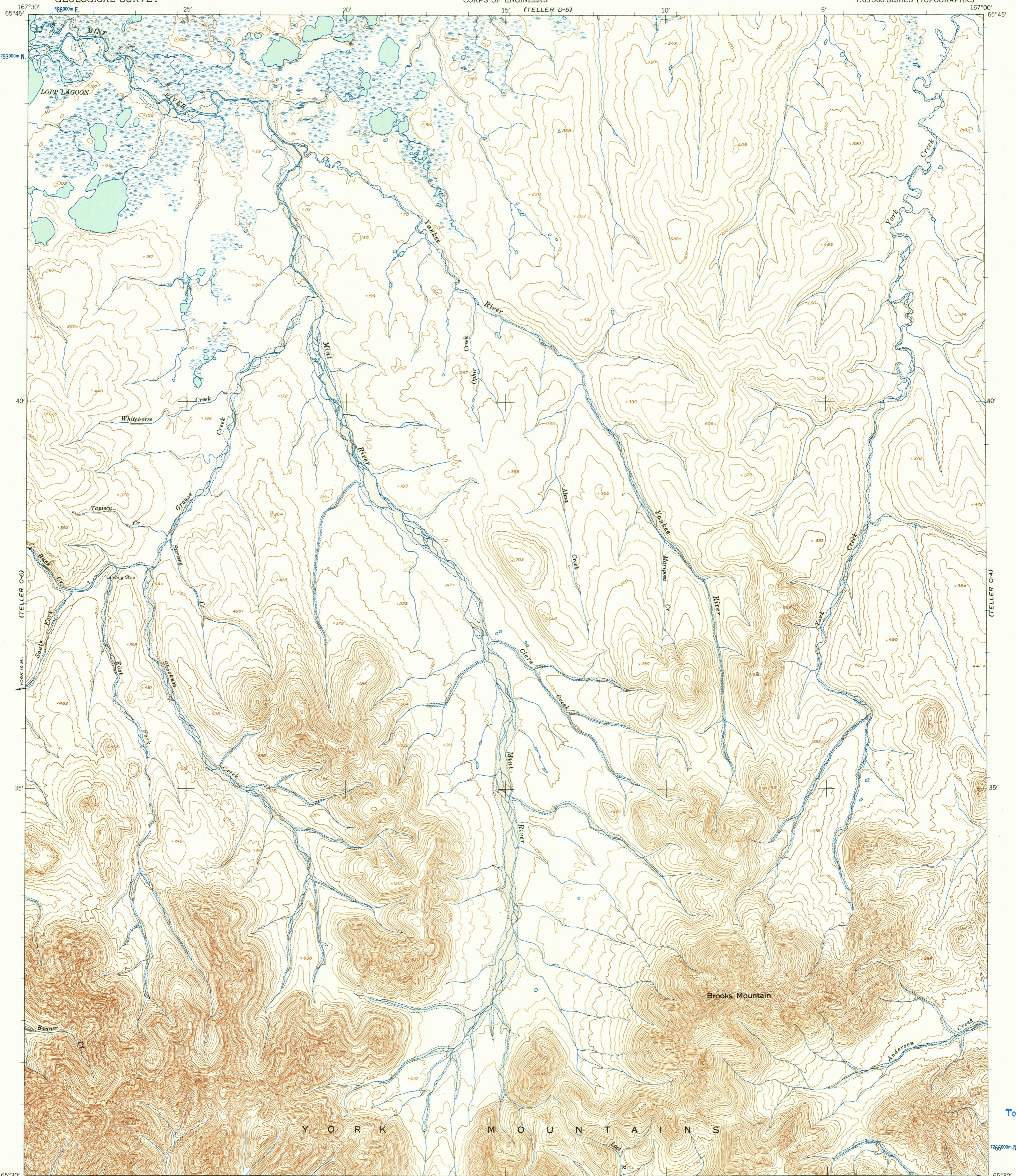
(TELLER D-6)

UNITED STATES
DEPARTMENT OF THE INTERIOR
GEOLOGICAL SURVEY

UNITED STATES
DEPARTMENT OF THE ARMY
CORPS OF ENGINEERS

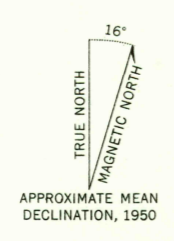
TELLER (C-5) QUADRANGLE
ALASKA—SECOND JUDICIAL DIVISION
1:63 360 SERIES (TOPOGRAPHIC)

(TELLER D-4)

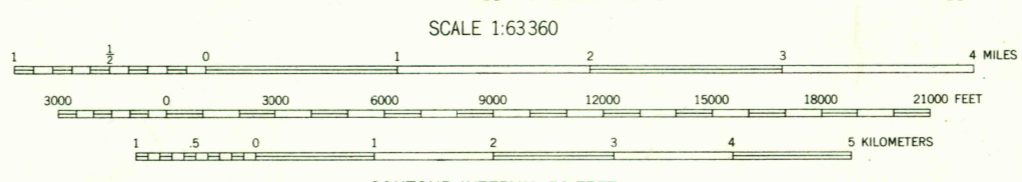


(TELLER B-6)

Mapped by the Army Map Service
Published for civil use by the Geological Survey
Control by USGS, USC&GS, and USCE
Topography from aerial photographs by photogrammetric methods
Aerial photographs taken 1950. Map not field checked
Universal Transverse Mercator projection, zone 3
1927 North American datum
1000-meter Universal Transverse Mercator
grid ticks, zone 3, shown in blue
Unchecked elevations are shown in brown



APPROXIMATE MEAN
DECLINATION, 1950



SCALE 1:63 360
CONTOUR INTERVAL 50 FEET
DASHED LINES REPRESENT 25-FOOT CONTOURS
DATUM IS MEAN SEA LEVEL



QUADRANGLE LOCATION

U.S.G.S.
FILE COPY
TOPOGRAPHIC DIVISION

ROAD CLASSIFICATION
Trails

TELLER (C-5), ALASKA
N6530-W16700/15x30
1950

(TELLER B-4)

FOR SALE BY U. S. GEOLOGICAL SURVEY
FAIRBANKS, ALASKA DENVER 2, COLORADO WASHINGTON 25, D. C.
A FOLDER DESCRIBING TOPOGRAPHIC MAPS AND SYMBOLS IS AVAILABLE ON REQUEST

USGS
Historical File
Topographic Division

JUN - 3 1957
2095