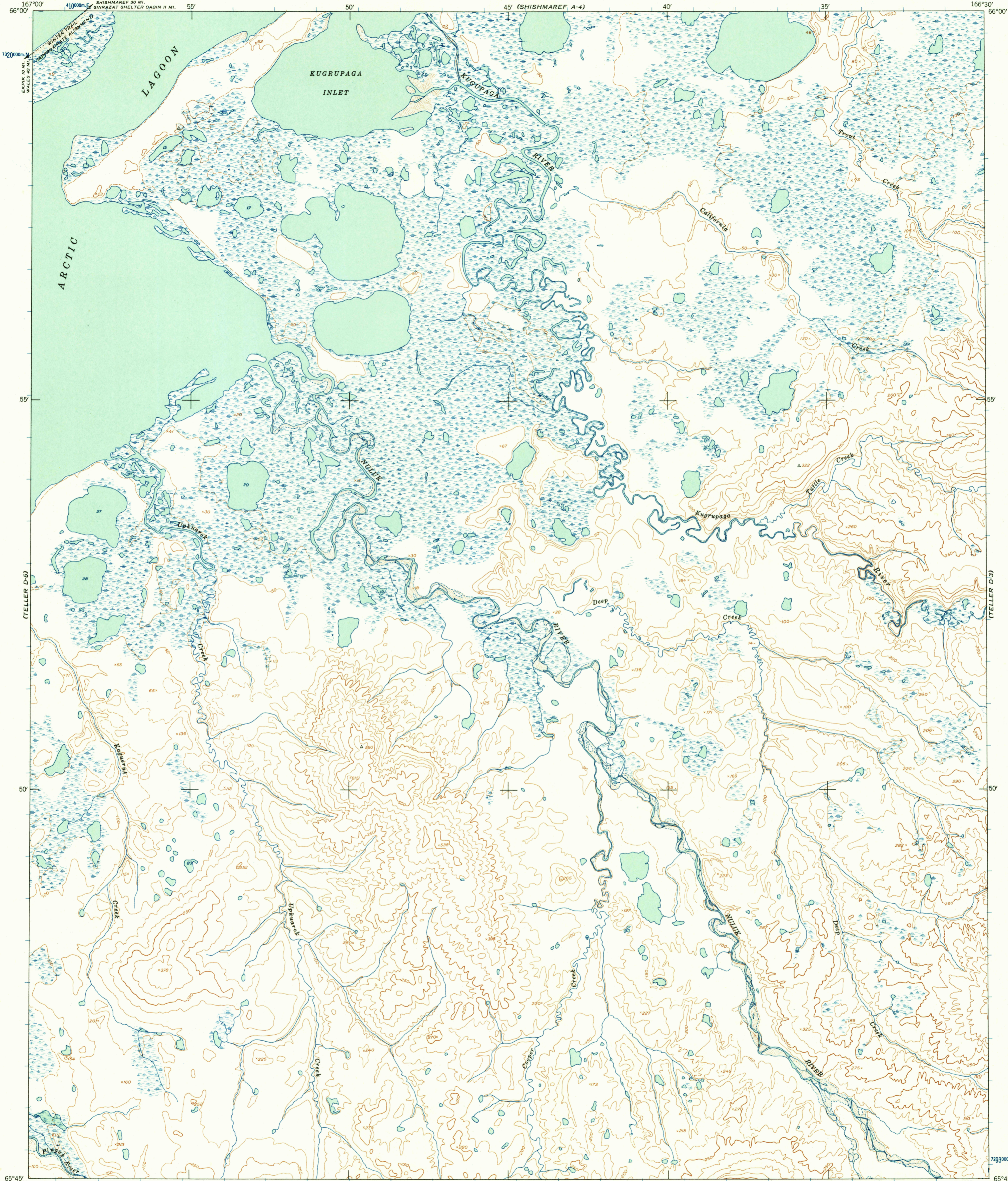
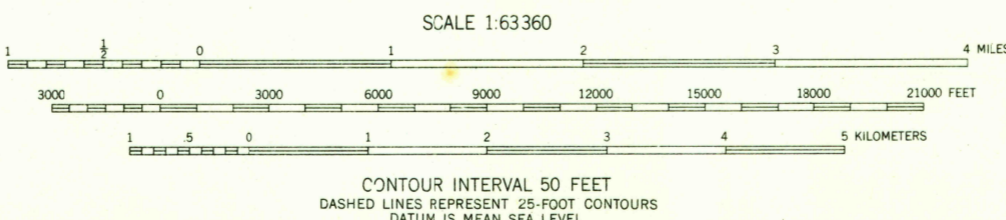
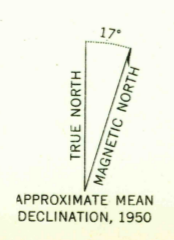


(SHISHMAREF A-3)



U.S.G.S.
FILE COPY
TOPOGRAPHIC DIVISION

(TELLER D-5)
Mapped by the Army Map Service
Published for civil use by the Geological Survey
Control by USGS, USC&GS, and USCE
Topography from aerial photographs by photogrammetric methods
Aerial photographs taken 1949-1950. Map not field checked
Universal Transverse Mercator projection, zone 3
1927 North American datum
1000-meter Universal Transverse Mercator
grid ticks, zone 3, shown in blue
Unchecked elevations are shown in brown



USGS
Historical File
Topographic Division

ROAD CLASSIFICATION
Trails

U.S.G.S.
FILE COPY
TOP. DIVISION

TELLER (D-4), ALASKA
N6545-W16630/15x30
1950

FOR SALE BY U. S. GEOLOGICAL SURVEY
FAIRBANKS, ALASKA DENVER 2, COLORADO WASHINGTON 25, D. C.
A FOLDER DESCRIBING TOPOGRAPHIC MAPS AND SYMBOLS IS AVAILABLE ON REQUEST

JUN - 3 1957
2112