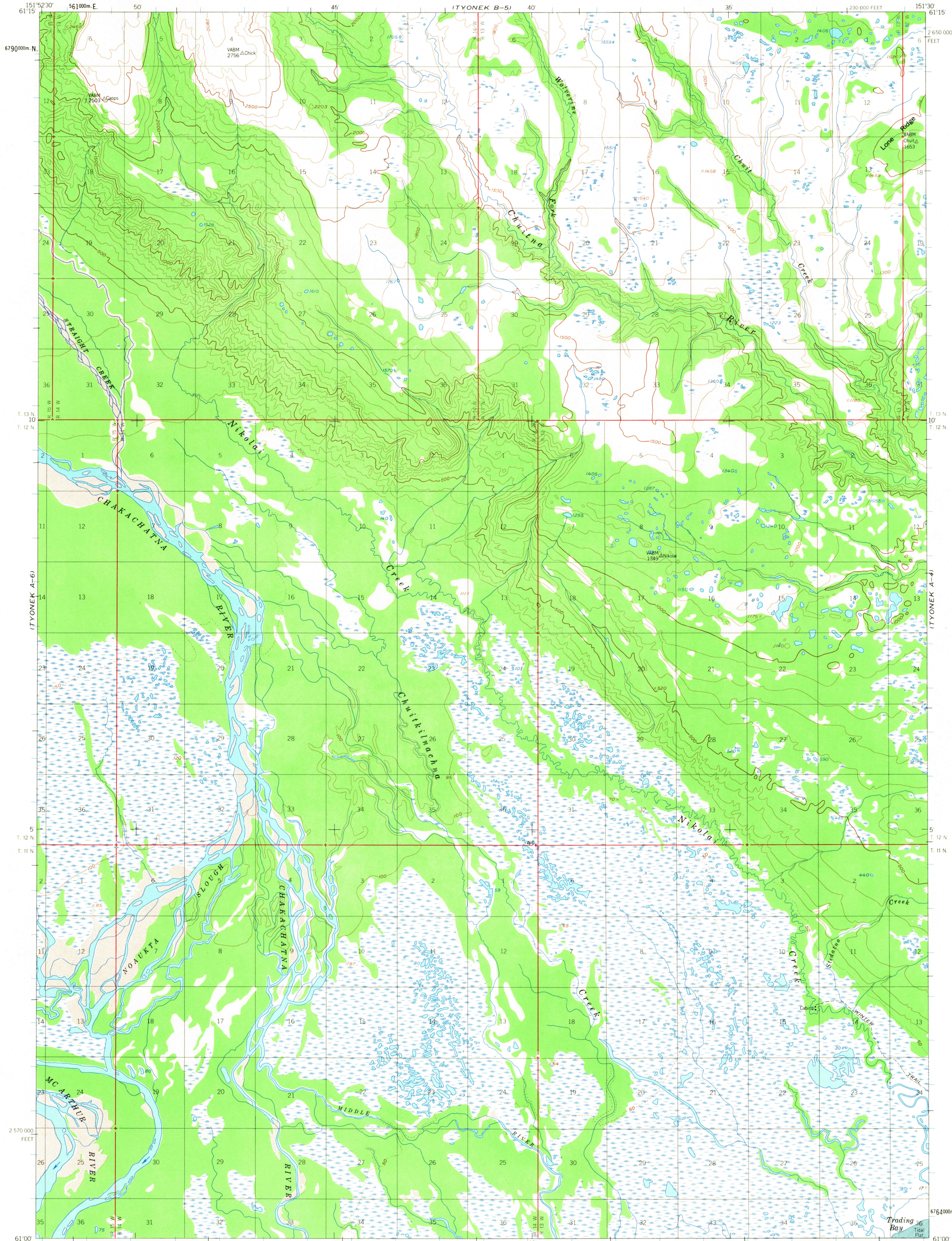
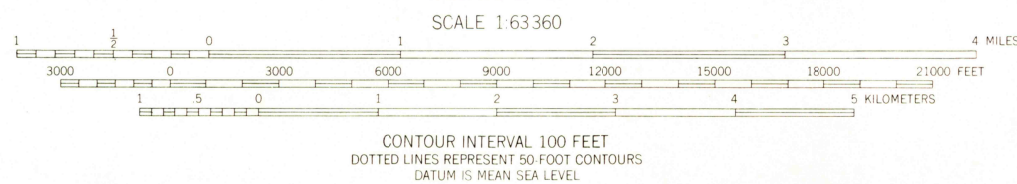
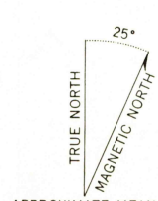


UNITED STATES
DEPARTMENT OF THE INTERIOR
GEOLOGICAL SURVEY

TYONEK (A-5) QUADRANGLE
ALASKA-KENAI PENINSULA BOROUGH
1:63 360 SERIES (TOPOGRAPHIC)



Mapped, edited, and published by the Geological Survey
Control by USGS and USC&GS
Topography by photogrammetric methods from aerial photographs
taken 1951-1953 and 1957, field annotated 1958. Map not field checked
Universal Transverse Mercator projection 1927 North American datum
10,000-foot grid based on Alaska coordinate system, zone 4
1000 meter Universal Transverse Mercator grid ticks, zone 5, shown in blue
Gray land lines represent unsurveyed and unmarked locations
determined by the Bureau of Land Management
Folio S-13, Seward Meridian
Swamps, as portrayed, indicate only the wetter areas,
usually of low relief, as interpreted from aerial photographs



FOR SALE BY U. S. GEOLOGICAL SURVEY
FAIRBANKS, ALASKA 99701, DENVER, COLORADO 80225, OR WASHINGTON, D. C. 20242
A FOLDER DESCRIBING TOPOGRAPHIC MAPS AND SYMBOLS IS AVAILABLE ON REQUEST



RETURN TO:
USGS NMD HISTORICAL MAP ARCHIVES

TYONEK (A-5), ALASKA
N6100-W15130/15X22.5

1958
MINOR REVISIONS 1967

TYONEK A-5
ISBN # 0607036400 AK 063

