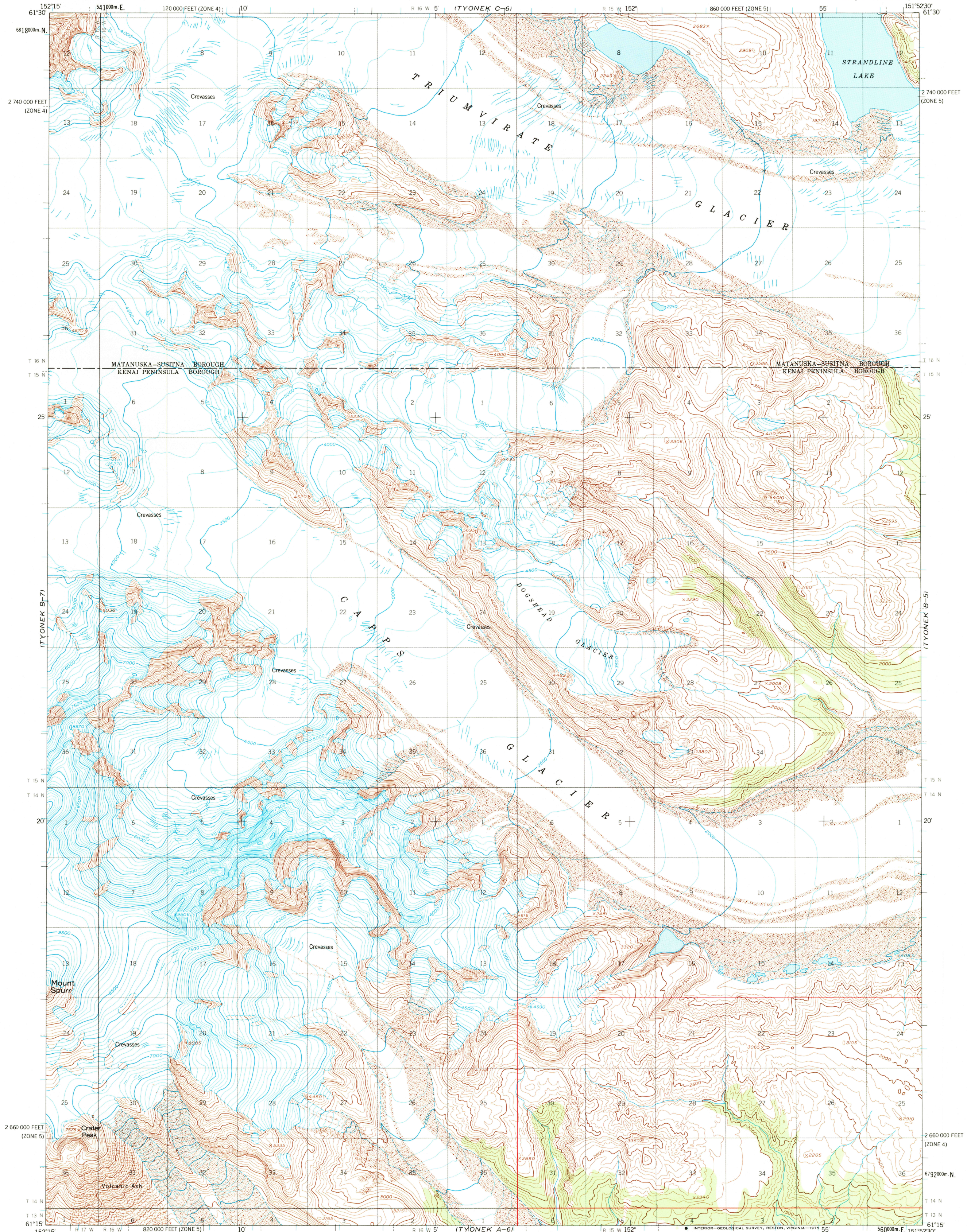


ITYONEK C-7)

UNITED STATES
DEPARTMENT OF THE INTERIOR
GEOLOGICAL SURVEY

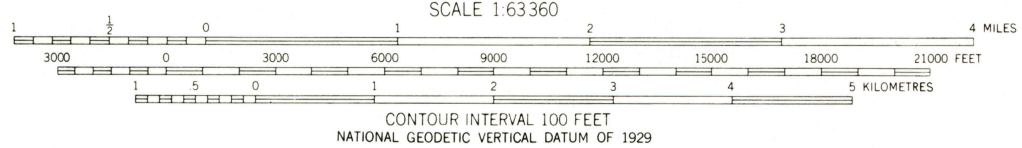
TYONEK (B-6) QUADRANGLE
ALASKA
1:63 360 SERIES (TOPOGRAPHIC)

ITYONEK C-5)



Mapped, edited, and published by the Geological Survey
Control by USGS
Topography by photogrammetric methods from aerial photographs
taken 1952 and 1954, field annotated 1958. Map not field checked
Universal Transverse Mercator projection, 1927 North American datum
10,000-foot grids based on Alaska coordinate system, zones 5 and 4
1000-metre Universal Transverse Mercator grid ticks,
zone 5, shown in blue
Gray land lines represent unsurveyed and unmarked locations
predetermined by the Bureau of Land Management
Folios S-12 and S-13, Seward Meridian

TRUE NORTH
MAGNETIC NORTH
APPROXIMATE MEAN
DECLINATION, 1958



ROAD CLASSIFICATION
No roads or trails in this area

FOR SALE BY U.S. GEOLOGICAL SURVEY
FAIRBANKS, ALASKA 99701, DENVER, COLORADO 80225, OR RESTON, VIRGINIA 22092
A FOLDER DESCRIBING TOPOGRAPHIC MAPS AND SYMBOLS IS AVAILABLE ON REQUEST

TYONEK (B-6), ALASKA
N6115-W15152.5/15X22.5
1958
MINOR REVISIONS 1974

RETURN TO:
USGS NMD HISTORICAL MAP ARCHIVES