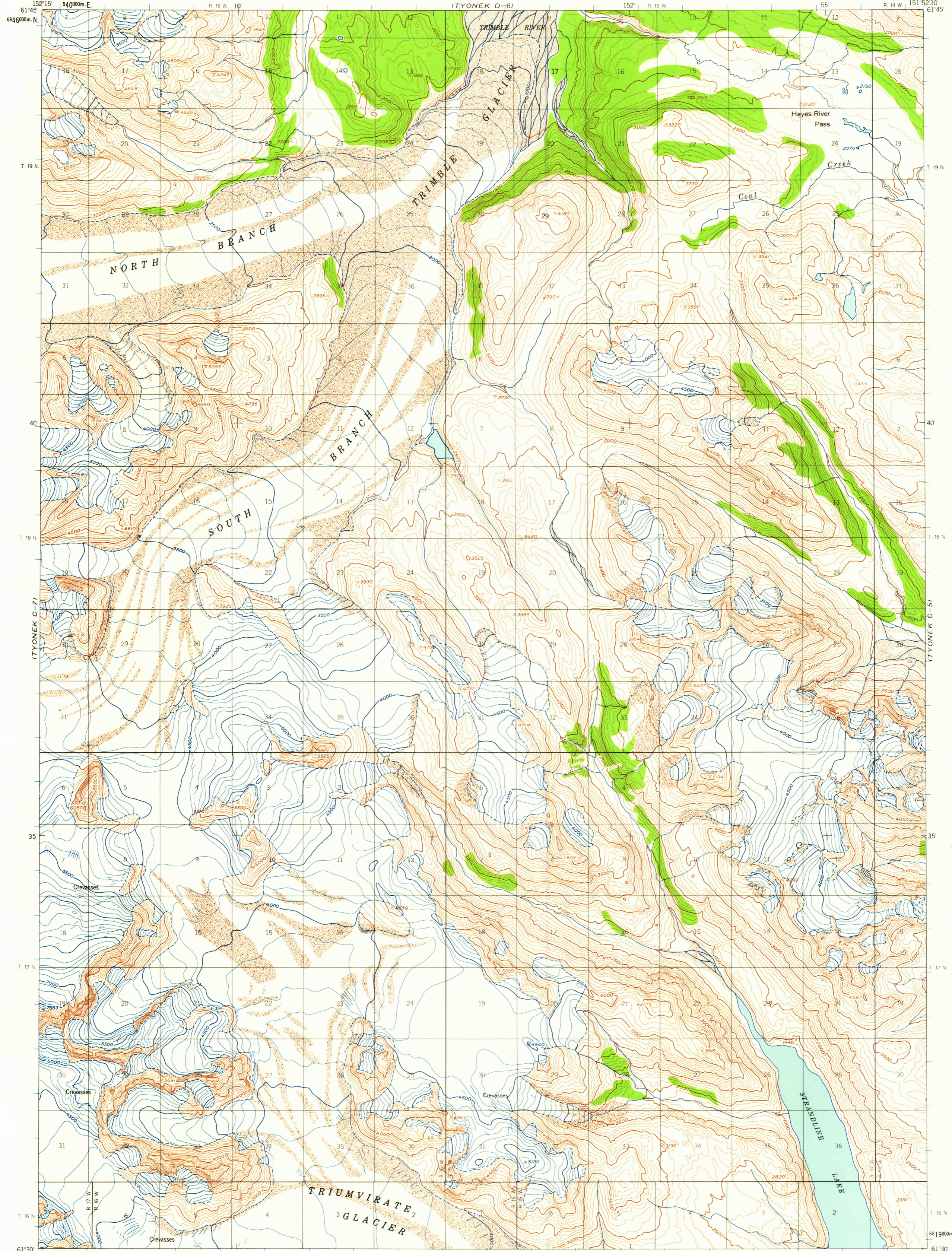


UNITED STATES  
DEPARTMENT OF THE INTERIOR  
GEOLOGICAL SURVEY

TYONEK (C-6) QUADRANGLE  
ALASKA  
1:63 360 SERIES (TOPOGRAPHIC)

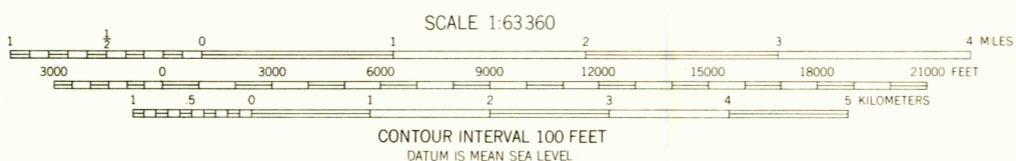
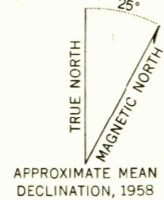


Mapped, edited, and published by the Geological Survey  
Control by USGS

Topography from aerial photographs by photogrammetric  
methods 1960. Aerial photographs taken 1952, 1953, and 1957  
field annotated 1958. Map not field checked

Universal Transverse Mercator projection  
1927 North American datum  
1000-meter Universal Transverse Mercator grid ticks,  
zone 5, shown in blue

Land lines represent unsurveyed and unmarked locations  
predetermined by the Bureau of Land Management  
Folios S-2, S-12, and S-13. Seward Meridian



USGS  
Historical File  
Topographic Division



ROAD CLASSIFICATION  
No roads or trails in this area

FOR SALE BY U.S. GEOLOGICAL SURVEY  
FAIRBANKS, ALASKA DENVER 25, COLORADO WASHINGTON 25, D.C.  
A FOLDER DESCRIBING TOPOGRAPHIC MAPS AND SYMBOLS IS AVAILABLE ON REQUEST

TYONEK (C-6), ALASKA  
N6130-W15152.5/15X22.5  
1958

U.S.G.S.  
FILE COPY  
TOPOGRAPHIC DIVISION

OCT 12 1961

2580