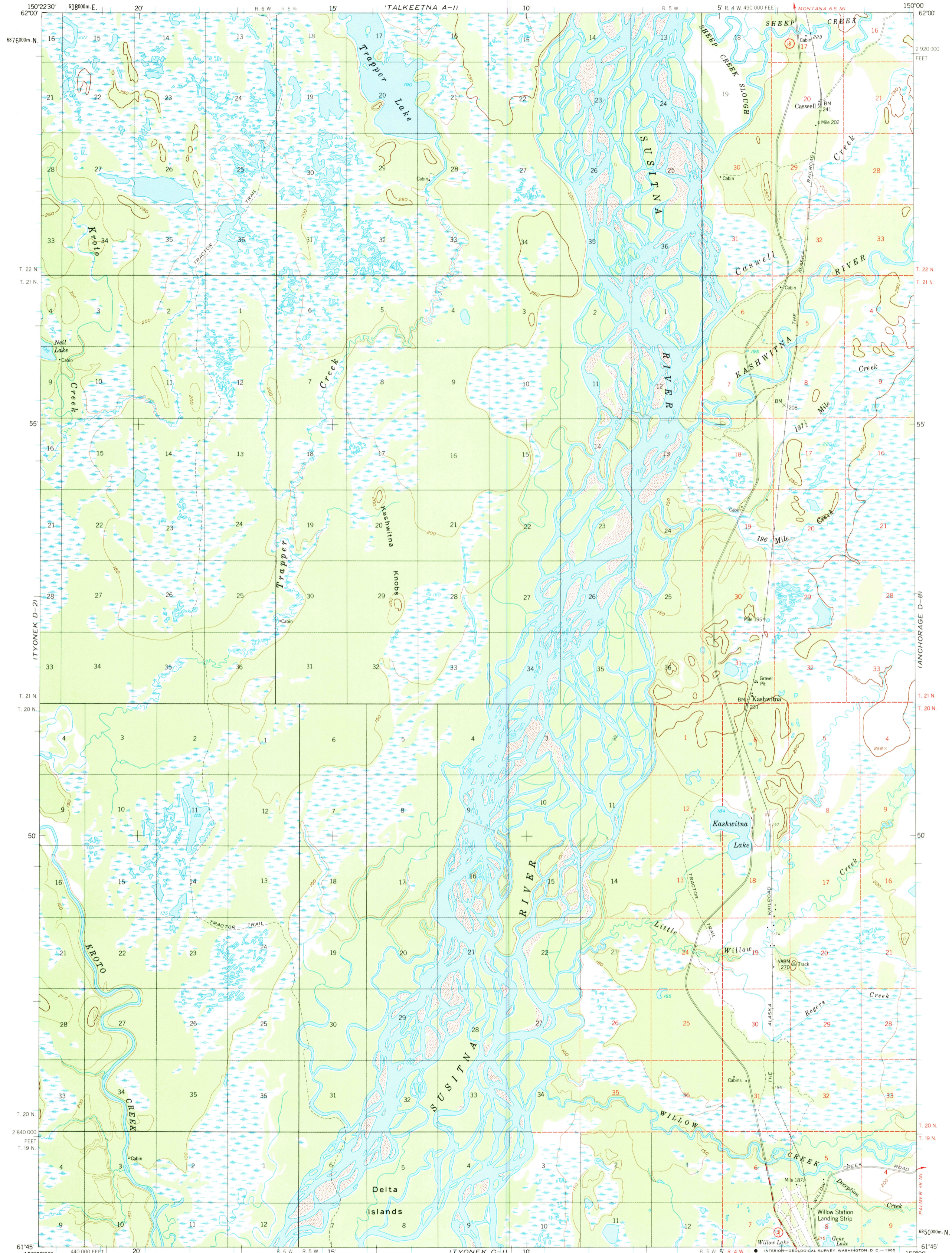


(TALKEETNA A-1)

UNITED STATES  
DEPARTMENT OF THE INTERIOR  
GEOLOGICAL SURVEY

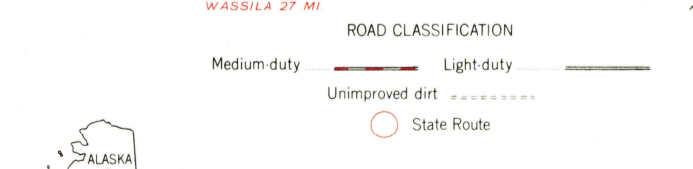
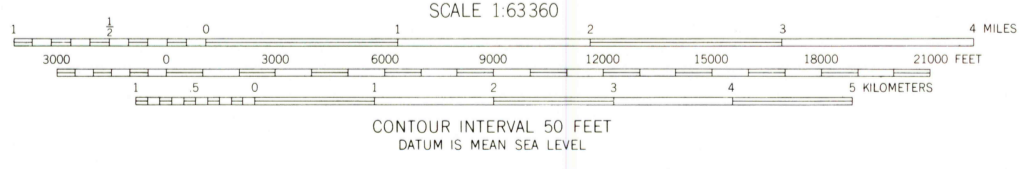
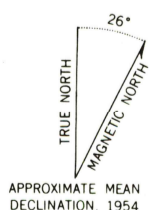
TYONEK (D-1) QUADRANGLE  
ALASKA  
1:63 360 SERIES (TOPOGRAPHIC)

(TALKEETNA MTS A-6)



(TYONEK C-2)

Maped, edited, and published by the Geological Survey  
Control by USGS and USC&GS and USCE  
Topography by photogrammetric methods from aerial photographs  
taken 1951; field annotated 1954. Map not field checked  
Universal Transverse Mercator projection, 1927 North American datum  
10,000-foot grid based on Alaska coordinate system, zone 4  
1,000-meter Universal Transverse Mercator grid ticks,  
zone 5, shown in blue  
Gray land lines represent unsurveyed and unmarked locations  
determined by the Bureau of Land Management  
Folio S 2, Seward Meridian  
Swamps, as portrayed, indicate only the wetter areas,  
usually of low relief, as interpreted from aerial photographs.



FOR SALE BY U.S. GEOLOGICAL SURVEY  
FAIRBANKS, ALASKA 99701, DENVER, COLORADO 80225, OR RESTON, VIRGINIA 22092  
A FOLDER DESCRIBING TOPOGRAPHIC MAPS AND SYMBOLS IS AVAILABLE ON REQUEST

TYONEK (D-1), ALASKA  
N6145-W15000/15X22.5  
1954  
MINOR REVISIONS 1964

RETURN TO:  
USGS WED HISTORICAL MAP ARCHIVES