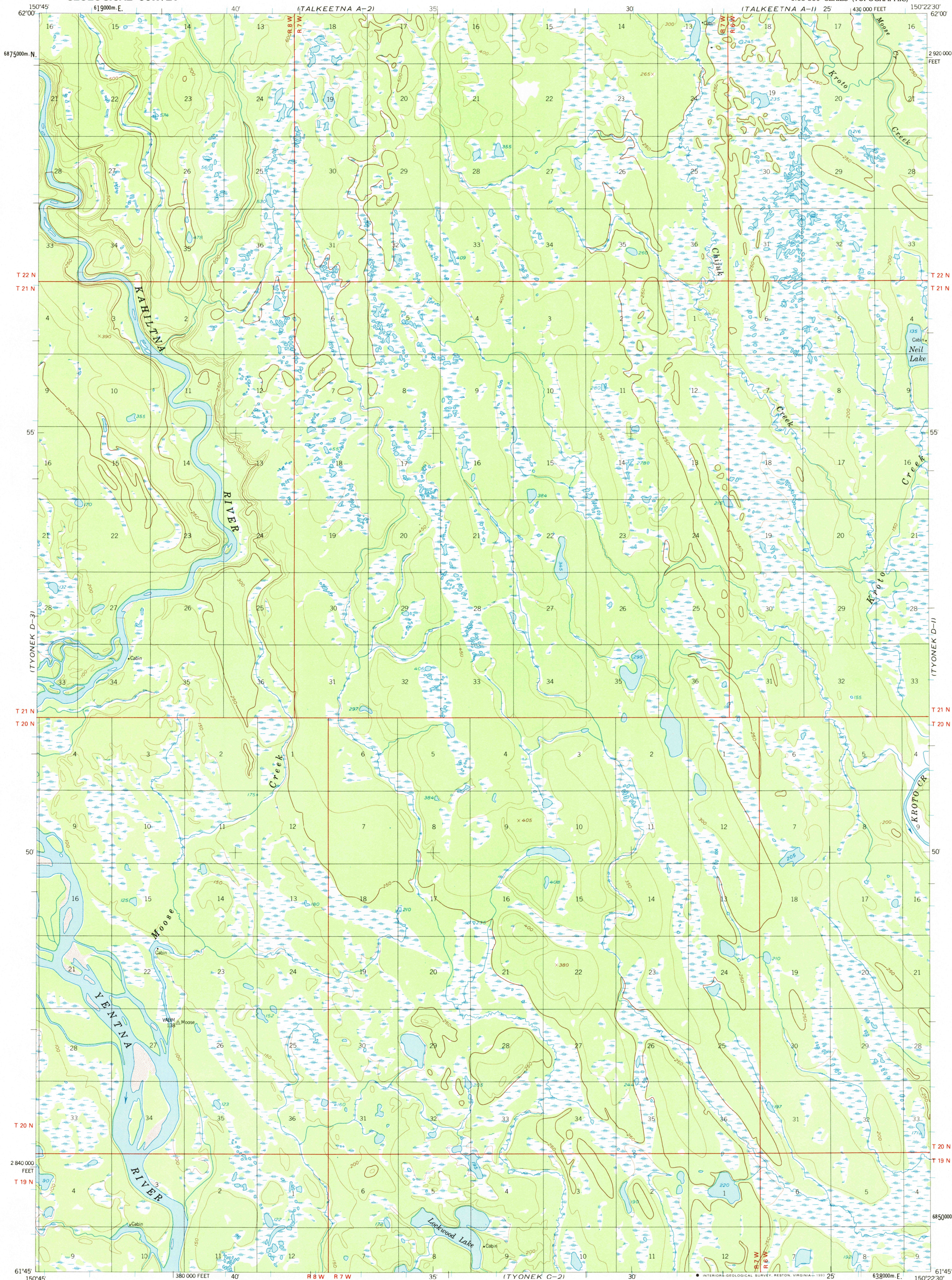


(TALKEETNA A-2)

(TALKEETNA A-1)

UNITED STATES
DEPARTMENT OF THE INTERIOR
GEOLOGICAL SURVEY

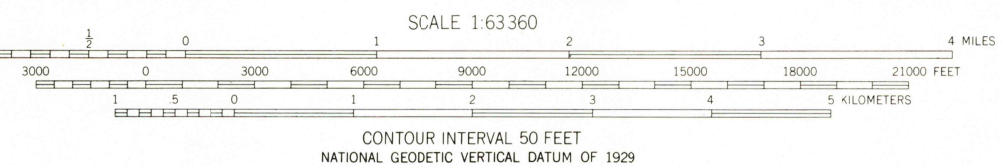
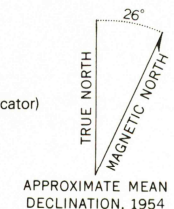
TYONEK (D-2) QUADRANGLE
ALASKA-MATANUSKA-SUSITNA BOROUGH
1:63 360 SERIES (TOPOGRAPHIC)



(TYONEK C-3)

(TYONEK C-1)

Produced by the United States Geological Survey
Control by USGS and USCE
Compiled from aerial photographs taken 1952,
field annotated 1954. Map not field checked
North American Datum of 1927 (NAD 27). Projection and
10,000-foot grid ticks: Alaska coordinate system, zone 4 (transverse Mercator)
1000-meter Universal Transverse Mercator grid ticks, zone 5
shown in blue
The difference between 1927 North American Datum and North
American Datum of 1983 (NAD 83) for 7.5 minute intersections
is given in USGS Bulletin 1875
Gray land lines represent unsurveyed and unmarked locations
predetermined by the Bureau of Land Management
Folio S-2, Seward Meridian
Swamps, as portrayed, indicate only wetter areas,
usually of low relief, as interpreted from aerial photographs



FOR SALE BY U. S. GEOLOGICAL SURVEY
FAIRBANKS, ALASKA 99701, DENVER, COLORADO 80225, OR RESTON, VIRGINIA 22092
A FOLDER DESCRIBING TOPOGRAPHIC MAPS AND SYMBOLS IS AVAILABLE ON REQUEST

TYONEK (D-2), ALASKA
61150-G4-TF-063

1954
MINOR REVISION 1978

RETURN TO:
USGS AND HISTORICAL MAP ARCHIVES