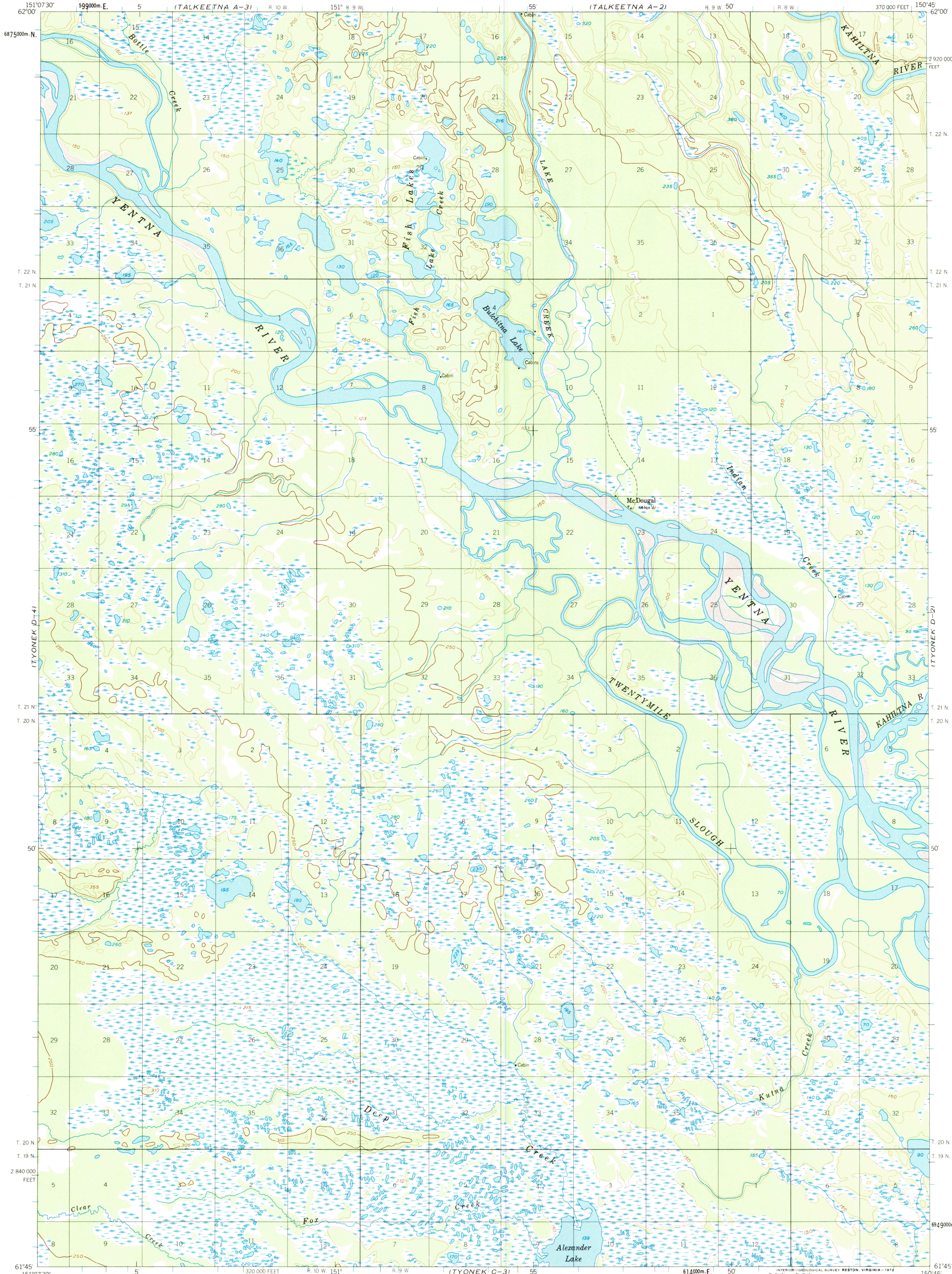
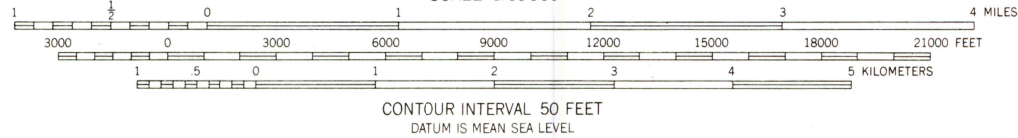
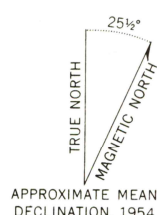


UNITED STATES
DEPARTMENT OF THE INTERIOR
GEOLOGICAL SURVEY

TYONEK (D-3) QUADRANGLE
ALASKA-MATANUSKA-SUSITNA BOROUGH
1:63,360 SERIES (TOPOGRAPHIC)



Mapped, edited, and published by the Geological Survey
Control by USGS
Topography from aerial photographs by photogrammetric
methods 1960. Aerial photographs taken 1952-1953.
field annotated 1954. Map not field checked
Universal Transverse Mercator projection, 1927 North American datum
10,000-foot grid based on Alaska coordinate system, zone 4
1000-meter Universal Transverse Mercator grid ticks,
zone 5, shown in blue
Land lines represent unsurveyed and unmarked locations
predetermined by the Bureau of Land Management
Folio S-2, Seward Meridian
Swamps as portrayed, indicate only the wetter areas,
usually of low relief, as interpreted from aerial photographs



ROAD CLASSIFICATION
Trails



TYONEK (D-3), ALASKA
N6145-W15045/15X22.5

1954
MINOR REVISIONS 1970

FOR SALE BY U.S. GEOLOGICAL SURVEY
ANCHORAGE, ALASKA 99508, DENVER, COLORADO 80225, OR RESTON, VIRGINIA 22092
A FOLDER DESCRIBING TOPOGRAPHIC MAPS AND SYMBOLS IS AVAILABLE ON REQUEST

