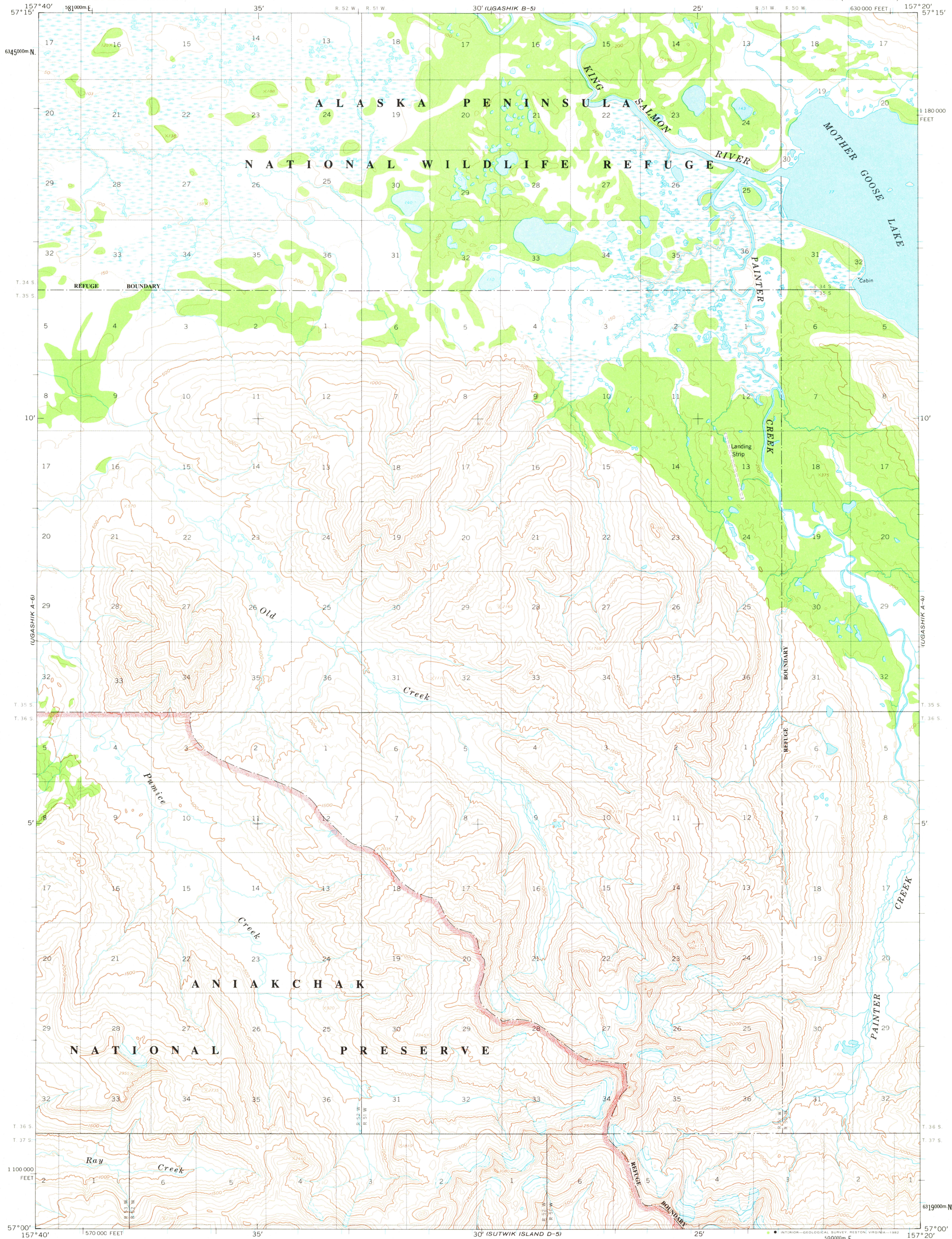


UNITED STATES
DEPARTMENT OF THE INTERIOR
GEOLOGICAL SURVEY

UGASHIK (A-5) QUADRANGLE
ALASKA
1:63 360 SERIES (TOPOGRAPHIC)



Mapped, edited, and published by the Geological Survey
Control by USGS and USC&GS

Topography by photogrammetric methods from aerial photographs
taken 1962, field annotated 1963. Map not field checked

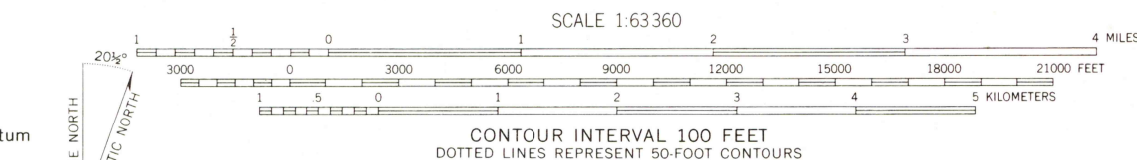
Universal Transverse Mercator projection. 1927 North American datum
10,000-foot grid based on Alaska coordinate system, zone 6
1000-meter Universal Transverse Mercator grid ticks,
zone 4, shown in blue

Land lines represent unsurveyed and unmarked locations
predetermined by the Bureau of Land Management
Folios S-26, Seward Meridian

Swamps, as portrayed, indicate only the wetter
areas, usually of low relief, as interpreted from
aerial photographs

There may be private inholdings within the boundaries of
the National or State reservations shown on this map

To place on the predicted North American Datum 1983 move
the projection lines 86 meters north and 137 meters east



FOR SALE BY U. S. GEOLOGICAL SURVEY
FAIRBANKS, ALASKA 99701, DENVER, COLORADO 80225, OR RESTON, VIRGINIA 22092
A FOLDER DESCRIBING TOPOGRAPHIC MAPS AND SYMBOLS IS AVAILABLE ON REQUEST



UGASHIK (A-5), ALASKA
N5700—W15720/15X20

1963
LIMITED REVISIONS 1981

ROAD CLASSIFICATION
No roads or trails in this area

APR 27 1982