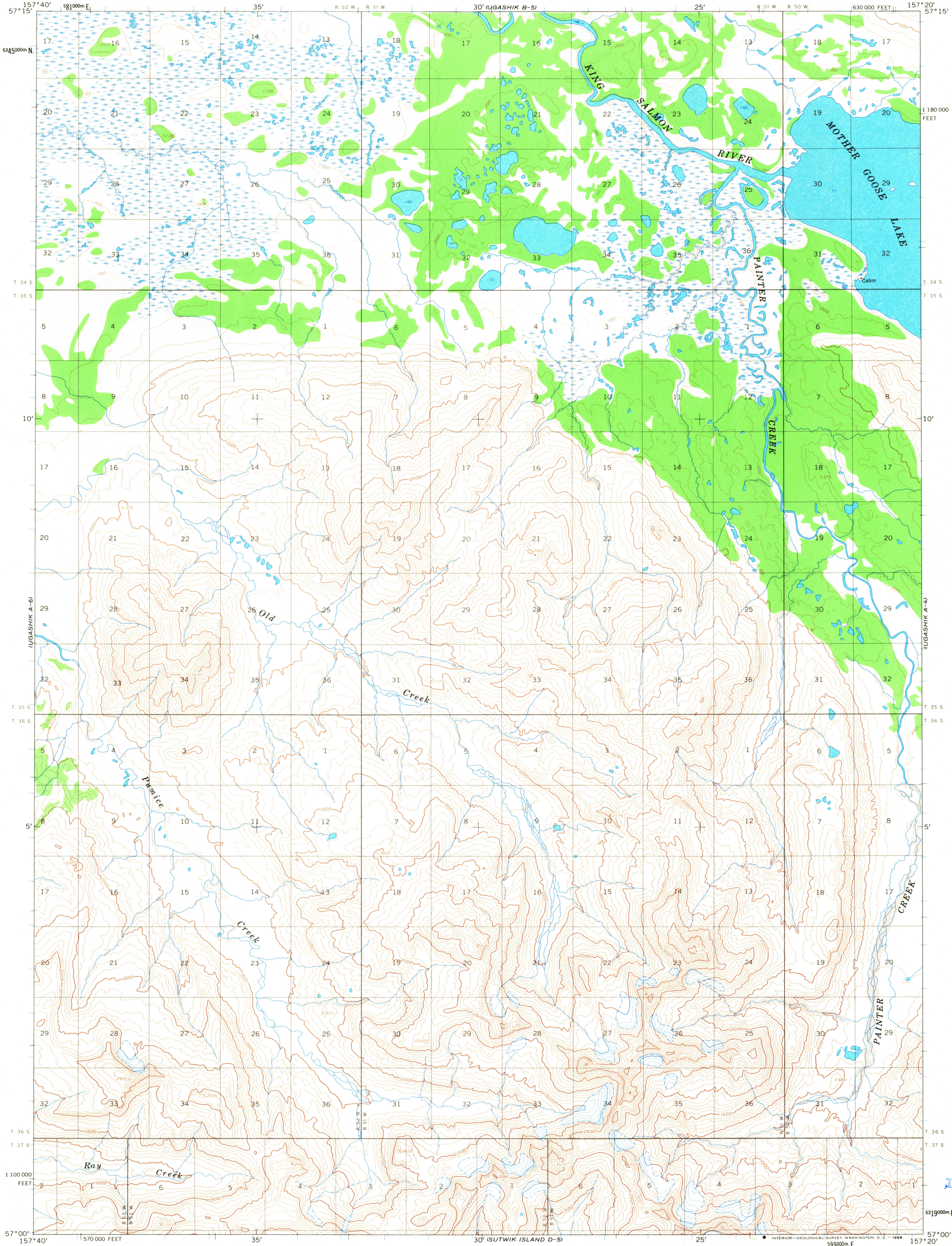
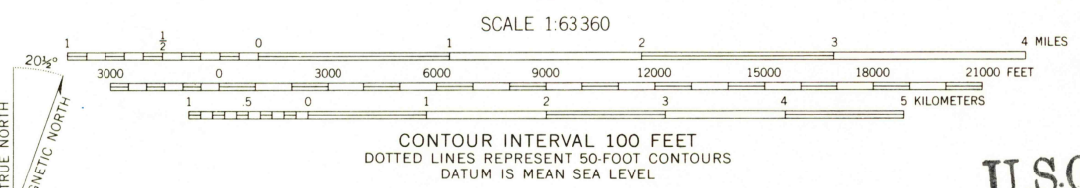


UNITED STATES  
DEPARTMENT OF THE INTERIOR  
GEOLOGICAL SURVEY

UGASHIK (A-5) QUADRANGLE  
ALASKA  
1:63 360 SERIES (TOPOGRAPHIC)



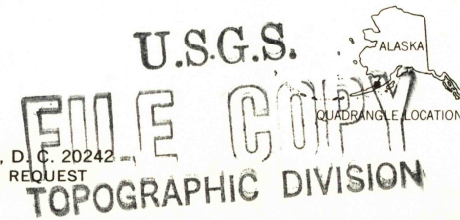
Mapped, edited, and published by the Geological Survey  
Control by USGS and USC&GS  
Topography by photogrammetric methods from aerial photographs  
taken 1962, field annotated 1963. Map not field checked  
Universal Transverse Mercator projection. 1927 North American datum  
10,000-foot grid based on Alaska coordinate system, zone 6  
1000-meter Universal Transverse Mercator grid ticks,  
zone 4, shown in blue  
Land lines represent unsurveyed and unmarked locations  
predetermined by the Bureau of Land Management  
Folios S-26, Seward Meridian  
Swamps, as portrayed, indicate only the wetter  
areas, usually of low relief, as interpreted from  
aerial photographs



ROAD CLASSIFICATION  
No roads or trails in this area

APPROXIMATE MEAN  
MAGNETIC NORTH  
DECLINATION, 1963

FOR SALE BY U. S. GEOLOGICAL SURVEY  
FAIRBANKS, ALASKA 99701, DENVER, COLORADO 80225, OR WASHINGTON, D. C. 20242  
A FOLDER DESCRIBING TOPOGRAPHIC MAPS AND SYMBOLS IS AVAILABLE ON REQUEST



UGASHIK (A-5), ALASKA  
N5700—W15720/15X20  
1963

USGS  
Historical File  
Topographic Division

2290  
MAR 8 1968