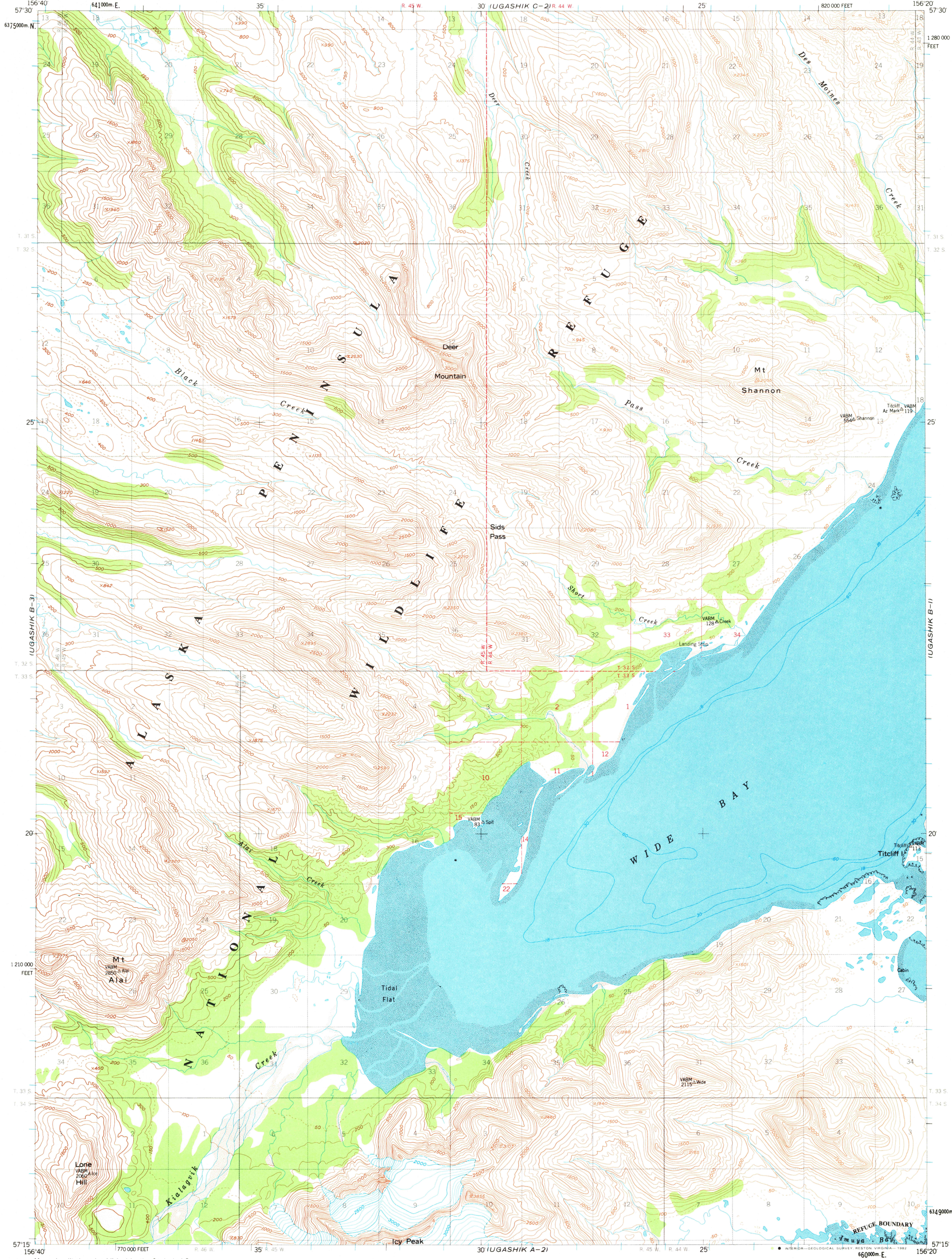


UGASHIK C-3

UNITED STATES  
DEPARTMENT OF THE INTERIOR  
GEOLOGICAL SURVEY

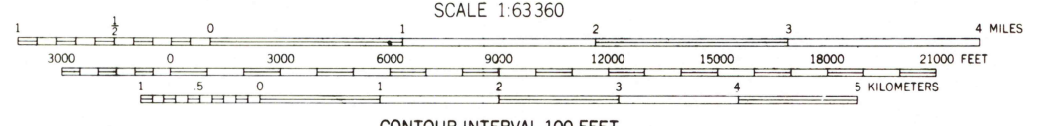
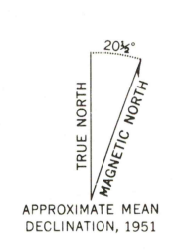
UGASHIK (B-2) QUADRANGLE  
ALASKA  
1:63 360 SERIES (TOPOGRAPHIC)

UGASHIK C-1



UGASHIK A-3

Mapped, edited, and published by the Geological Survey  
Control by USCGS and USCE  
Topography by photogrammetric methods from aerial photographs taken 1951. Map not field checked  
Selected hydrographic data compiled from USCGS Charts 8502 (1953) (1:969,761 scale), 8666 (1951), 9302, (1:1,534,076 scale) and from aerial photographs. This information is not intended for navigational purposes  
Universal Transverse Mercator projection, 1927 North American datum 10,000-foot grid based on Alaska coordinate system, zone 6 1000-meter Universal Transverse Mercator grid ticks, zone 4, shown in blue  
Gray land lines represent unsurveyed and unmarked locations predetermined by the Bureau of Land Management Folios S-22 and S-25, Seward Meridian  
To place on the predicted North American Datum 1983 move the projection lines 83 meters north and 138 meters east  
There may be private inholdings within the boundaries of the National or State reservations shown on this map



CONTOUR INTERVAL 100 FEET  
DASHED LINES REPRESENT 50-FOOT CONTOURS  
NATIONAL GEODETIC VERTICAL DATUM OF 1929  
DEPTH CURVES IN FEET DATUM IS MEAN LOWER LOW WATER  
SHORELINE SHOWN REPRESENTS THE APPROXIMATE LINE OF MEAN HIGH WATER  
THE AVERAGE RANGE OF TIDE IS APPROXIMATELY 10 FEET

FOR SALE BY U. S. GEOLOGICAL SURVEY  
FAIRBANKS, ALASKA 99701, DENVER, COLORADO 80225, OR RESTON, VIRGINIA 22092  
A FOLDER DESCRIBING TOPOGRAPHIC MAPS AND SYMBOLS IS AVAILABLE ON REQUEST



ROAD CLASSIFICATION  
No roads or trails in this area

UGASHIK (B-2), ALASKA  
N5715-W15620/15X20  
1951  
LIMITED REVISIONS 1981

APR 27 1982

2500