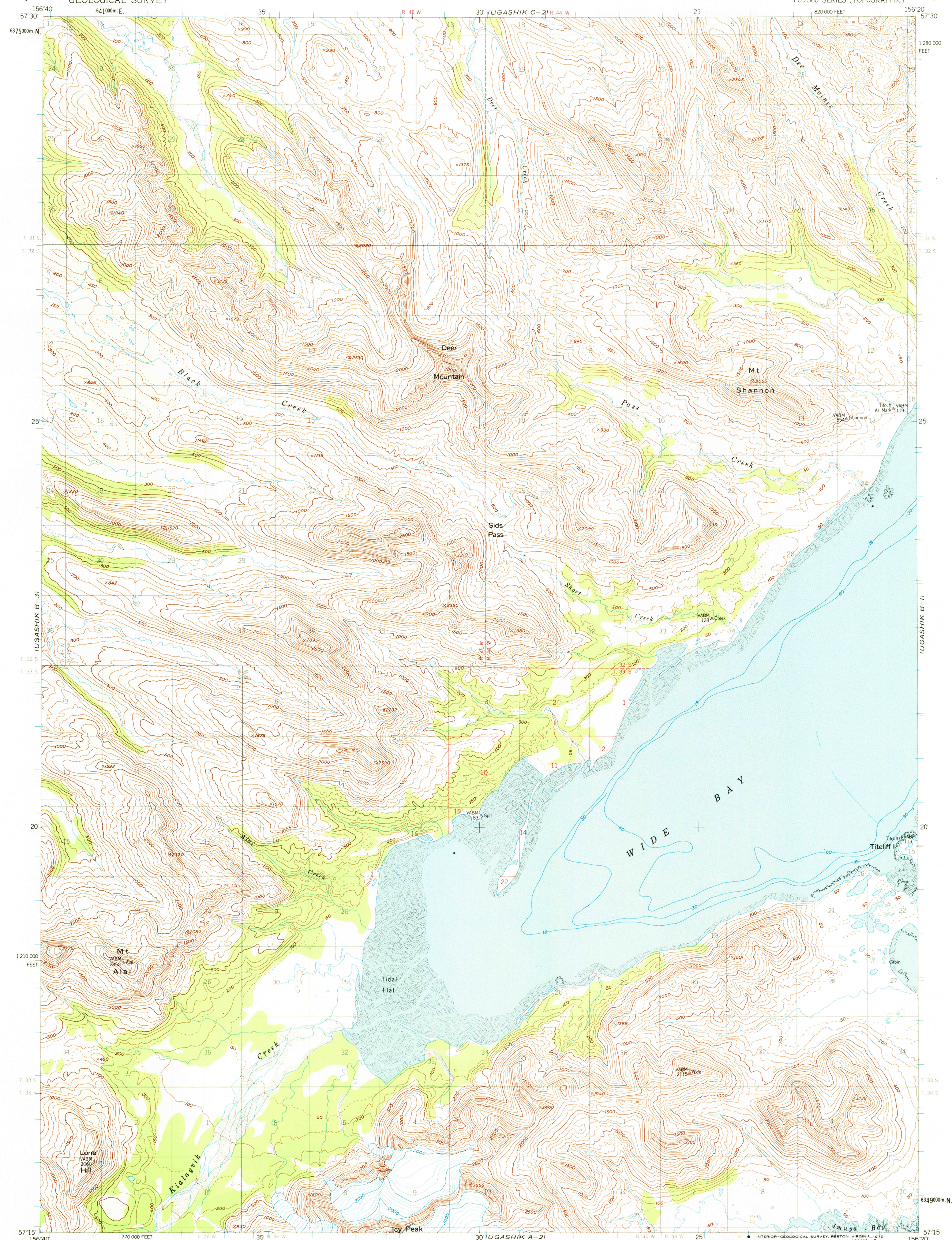


UGASHIK C-3

UNITED STATES
DEPARTMENT OF THE INTERIOR
GEOLOGICAL SURVEY

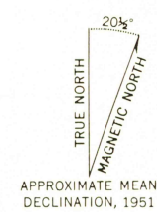
UGASHIK (B-2) QUADRANGLE
ALASKA
1:63 360 SERIES (TOPOGRAPHIC)

UGASHIK C-1



UGASHIK A-3

Mapped, edited, and published by the Geological Survey
Control by US&GS and USCE
Topography by photogrammetric methods from aerial photographs
taken 1951. Map not field checked
Selected hydrographic data compiled from US&GS Charts 8502
(1953) (1:969,761 scale), 8666 (1951), 9302, (1:1,534,076 scale)
and from aerial photographs. This information is not intended for
navigational purposes
Universal Transverse Mercator projection, 1927 North American datum
10,000-foot grid based on Alaska coordinate system, zone 6
1000-meter Universal Transverse Mercator grid ticks,
zone 4, shown in blue
Gray land lines represent unsurveyed and unmarked locations
predetermined by the Bureau of Land Management
Folios S-22 and S-25, Seward Meridian



CONTOUR INTERVAL 100 FEET
DASHED LINES REPRESENT 50 FOOT CONTOURS
NATIONAL GEODETIC VERTICAL DATUM OF 1929
DEPTH CURVES IN FEET DATUM IS MEAN LOWER LOW WATER
SHORELINE SHOWN REPRESENTS THE APPROXIMATE LINE OF MEAN HIGH WATER
THE AVERAGE RANGE OF TIDE IS APPROXIMATELY 10 FEET

FOR SALE BY U. S. GEOLOGICAL SURVEY
FAIRBANKS, ALASKA 99701, DENVER, COLORADO 80225, OR RESTON, VIRGINIA 22092
A FOLDER DESCRIBING TOPOGRAPHIC MAPS AND SYMBOLS IS AVAILABLE ON REQUEST



ROAD CLASSIFICATION
No roads or trails in this area

UGASHIK (B-2), ALASKA
N5715-W15620/15X20
1951
MINOR REVISIONS 1973

APR 21 1975

USGS
Historical File
Topographic Division

1180