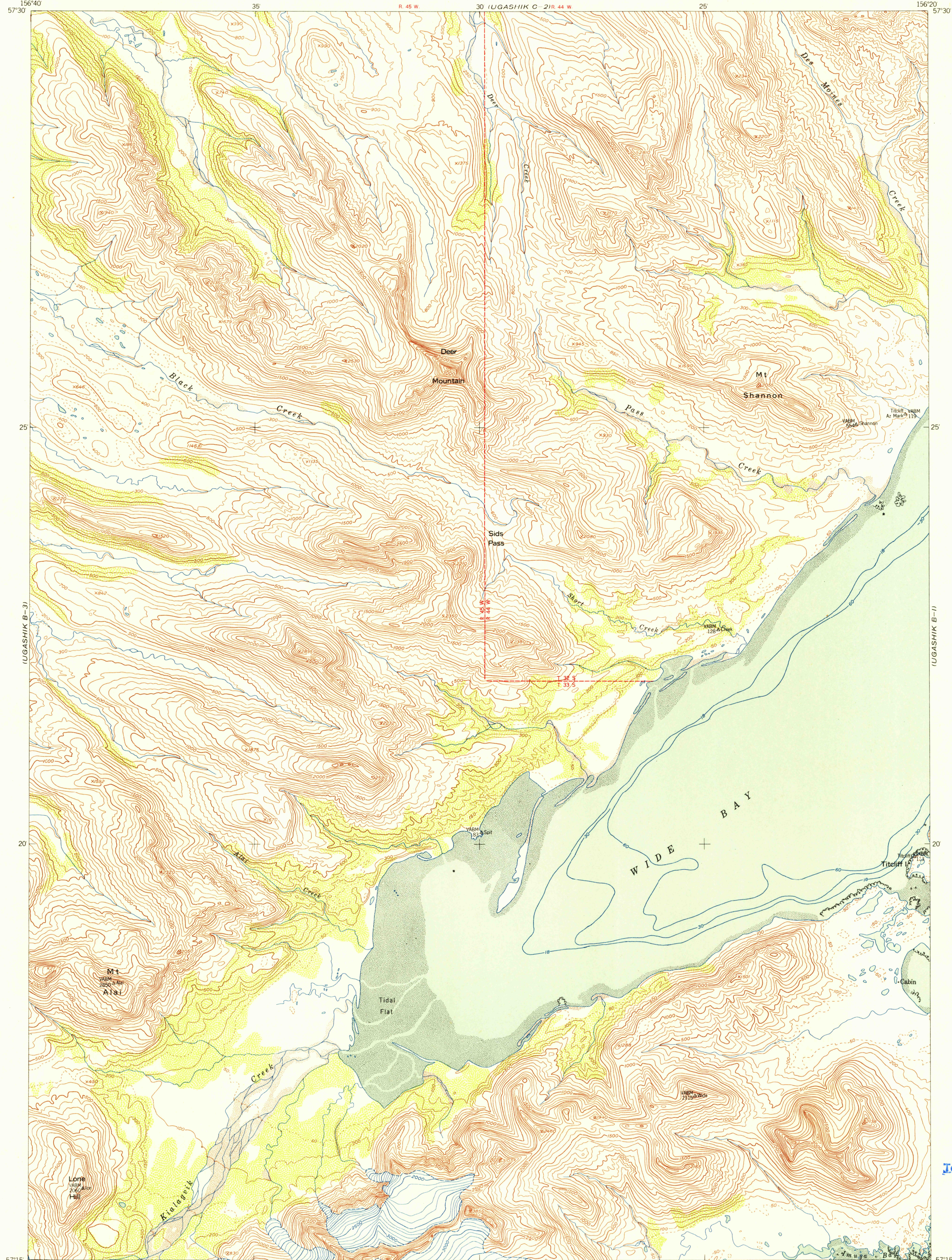


UNITED STATES  
DEPARTMENT OF THE INTERIOR  
GEOLOGICAL SURVEY

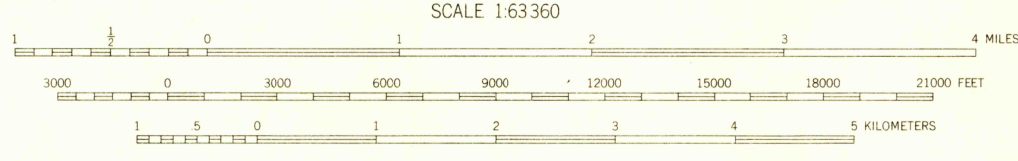
UGASHIK (B-2) QUADRANGLE  
ALASKA—THIRD JUDICIAL DIVISION  
1:63 360 SERIES (TOPOGRAPHIC)

U.S.G.S.  
FILE COPY  
TOPOGRAPHIC DIVISION



Maped, edited, and published by the Geological Survey  
Control by USC&GS and USCE  
Hydrography compiled from USC&GS charts 8502 (1:969,761 scale),  
8666, 9302, (1:1,534,076 scale), and from aerial photographs  
Topography from aerial photographs by multiplex methods 1955  
Aerial photographs taken 1951. Map not field checked  
Universal Transverse Mercator projection, zone 4  
1927 North American datum  
Dashed land lines indicate approximate locations  
Unchecked elevations are shown in brown

TRUE NORTH  
MAGNETIC NORTH  
APPROXIMATE MEAN  
DECLINATION, 1955



CONTOUR INTERVAL 100 FEET  
DASHED LINES REPRESENT 50-FOOT CONTOURS  
DATUM IS MEAN SEA LEVEL  
DEPTH CURVES IN FEET DATUM IS MEAN LOWER LOW WATER  
SHORELINE SHOWN REPRESENTS THE APPROXIMATE LINE OF MEAN HIGH WATER  
THE AVERAGE RANGE OF TIDE IS APPROXIMATELY 10 FEET

FOR SALE BY U.S. GEOLOGICAL SURVEY  
FAIRBANKS, ALASKA FEDERAL CENTER, DENVER, COLORADO WASHINGTON 25, D.C.  
A FOLDER DESCRIBING TOPOGRAPHIC MAPS AND SYMBOLS IS AVAILABLE ON REQUEST



ROAD CLASSIFICATION  
ALL WEATHER ROADS DRY WEATHER ROADS  
Hard-surface.....None Improved dirt.....None  
Other.....None Unimproved dirt.....None  
Trails.....None

UGASHIK (B-2), ALASKA  
N5715-W15620/15X20  
1951

USGS  
Historical File  
Topographic Division

U.S.G.S.  
FILE COPY  
TOPOGRAPHIC DIVISION

JUL 3 1956

2110