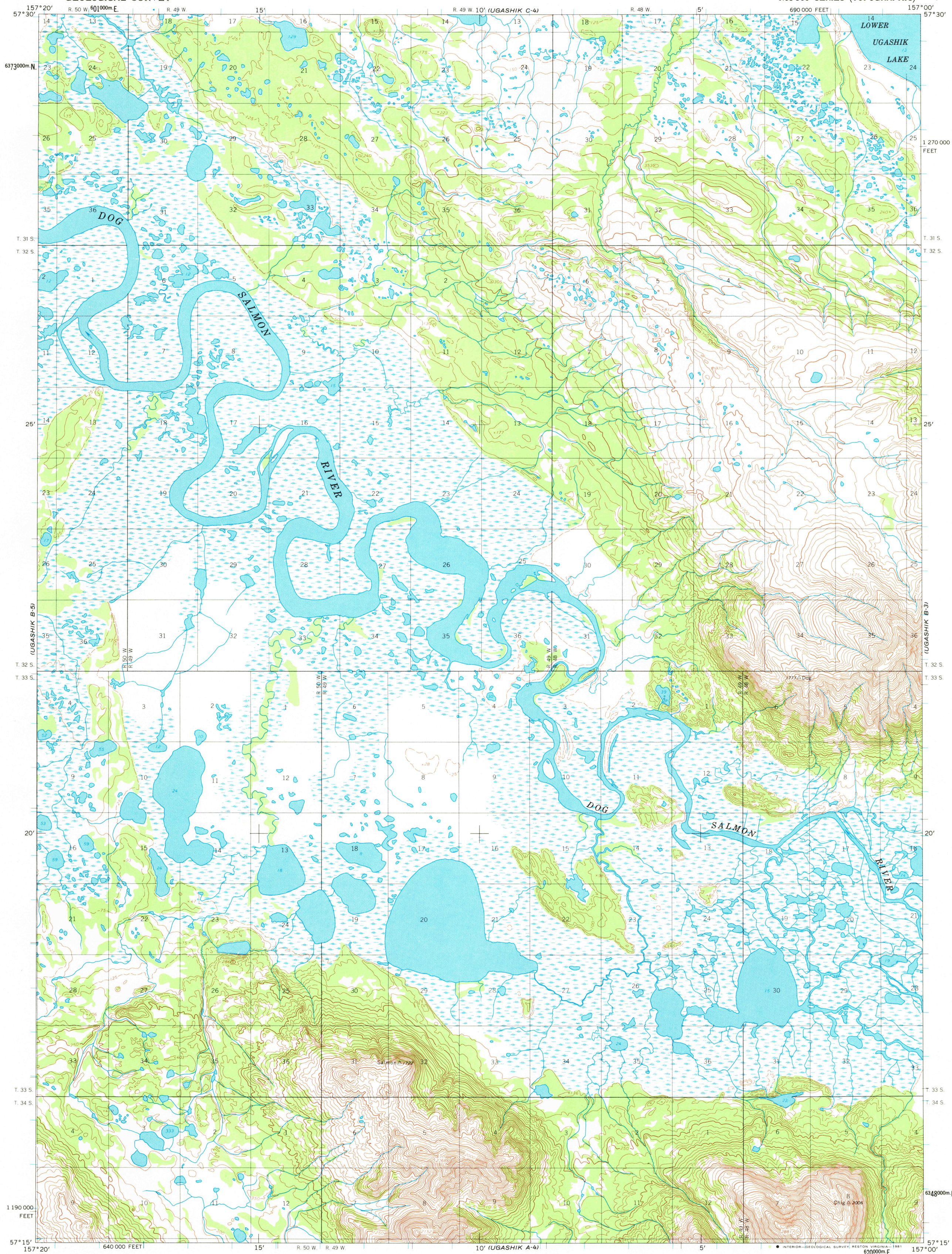


UNITED STATES  
DEPARTMENT OF THE INTERIOR  
GEOLOGICAL SURVEY

UGASHIK (B-4) QUADRANGLE  
ALASKA  
1:63 360 SERIES (TOPOGRAPHIC)



Maped by the Army Map Service  
Edited and published by the Geological Survey

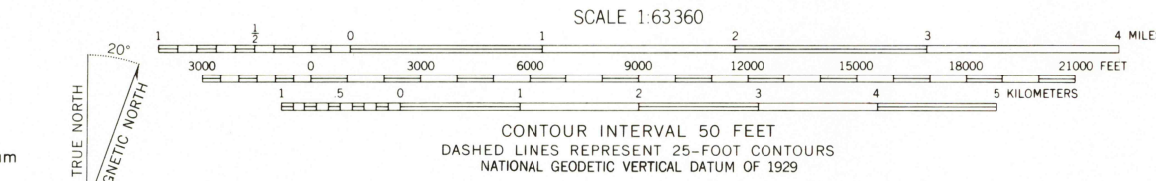
Control by USC&GS and USCE

Topography by photogrammetric methods from aerial photographs  
Taken 1951 and 1953, field annotated 1954. Map not field checked

Universal Transverse Mercator projection, 1927 North American datum  
10,000-foot grid based on Alaska coordinate system, zone 6  
1000-meter Universal Transverse Mercator grid ticks,  
zone 4, shown in blue

Land lines represent unsurveyed and unmarked locations  
predetermined by the Bureau of Land Management  
Folios S-21, S-22, S-25 and S-26, Seward Meridian

To place on the predicted North American Datum 1983 move  
the projection lines 83 meters north and 136 meters east



TRUE NORTH  
MAGNETIC NORTH  
APPROXIMATE MEAN  
DECLINATION, 1954

FOR SALE BY U.S. GEOLOGICAL SURVEY  
FAIRBANKS, ALASKA 99701, DENVER, COLORADO 80225, OR RESTON, VIRGINIA 22092  
A FOLDER DESCRIBING TOPOGRAPHIC MAPS AND SYMBOLS IS AVAILABLE ON REQUEST



ROAD CLASSIFICATION  
No roads or trails in this area

UGASHIK (B-4), ALASKA  
N5715—W15700/15X20

1954  
MINOR REVISIONS 1981

USGS  
HISTORICAL FILE  
NATIONAL MAPPING DIVISION

MAY 28 1981  
1200