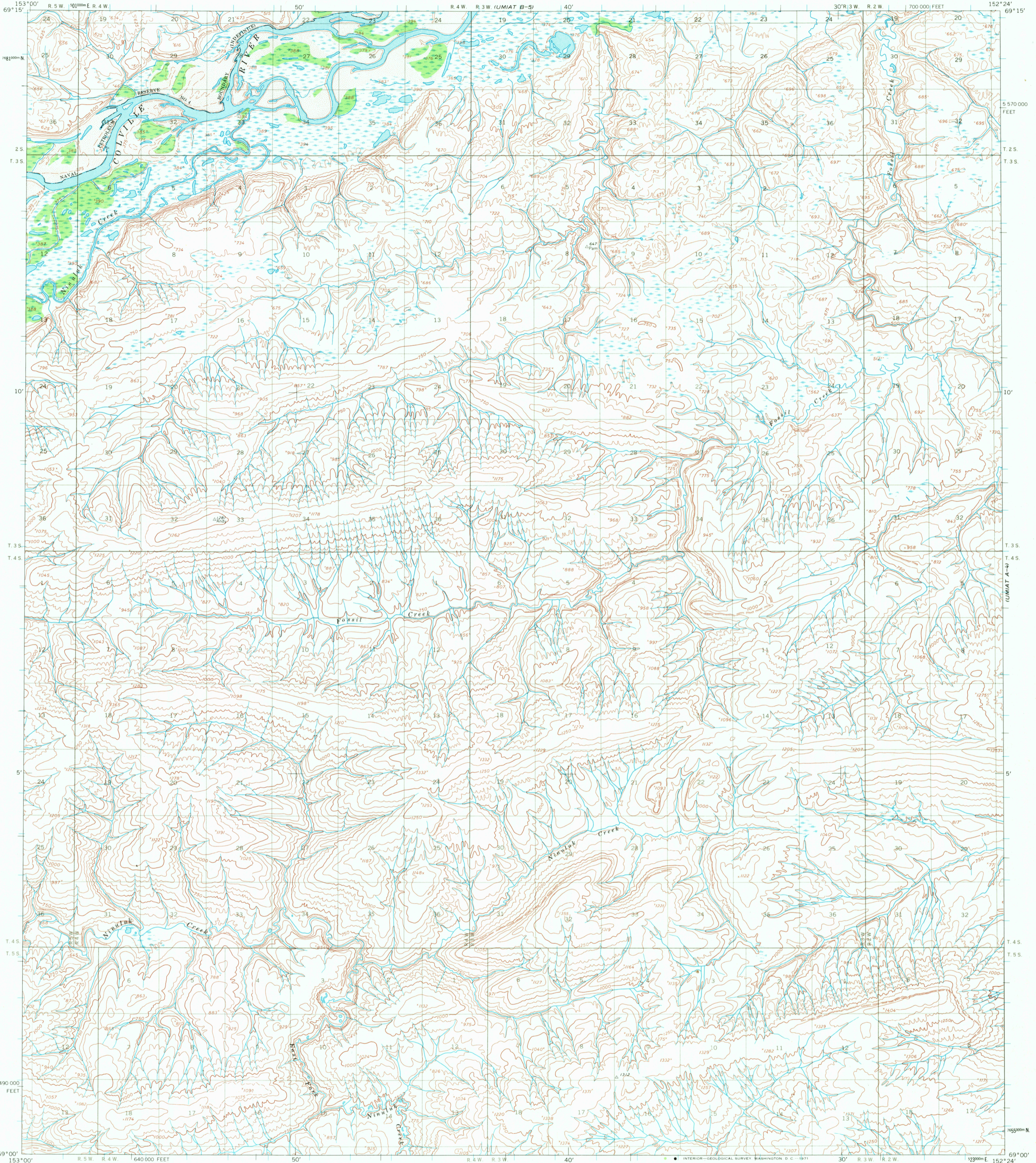


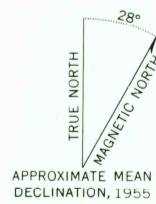
UMIAT B-4



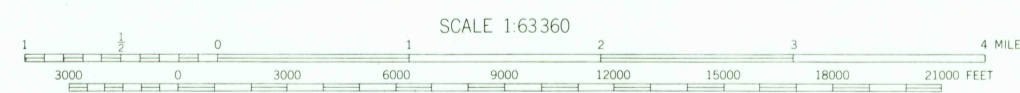
Mapped by the U. S. Army Topographic Command
Published for civil use by the Geological Survey

Control by USC&GS and USCE

Topography by photogrammetric methods from aerial photographs
taken 1955, field annotated 1955. Map not field checked
Universal Transverse Mercator projection, 1927 North American datum
10,000-foot grid based on Alaska coordinate system, zone 5
1000-meter Universal Transverse Mercator grid ticks, zone 5, shown in blue
Land lines represent unsurveyed and unmarked locations predetermined
by the Bureau of Land Management, Folio U-10, Umiat Meridian



APPROXIMATE MEAN
DECLINATION, 1955



CONTOUR INTERVAL 50 FEET
DASHED LINES REPRESENT 25-FOOT CONTOURS
DATUM IS MEAN SEA LEVEL

FOR SALE BY U. S. GEOLOGICAL SURVEY
FAIRBANKS, ALASKA 99701, DENVER, COLORADO 80225, OR WASHINGTON, D. C. 20242
A FOLDER DESCRIBING TOPOGRAPHIC MAPS AND SYMBOLS IS AVAILABLE ON REQUEST

ROAD CLASSIFICATION
No roads or trails in this area



QUADRANGLE LOCATION

UMIAT (A-5), ALASKA
N6900-W15224/15 X 36

1955

RETURN TO:
USGS NMD HISTORICAL MAP ARCHIVES